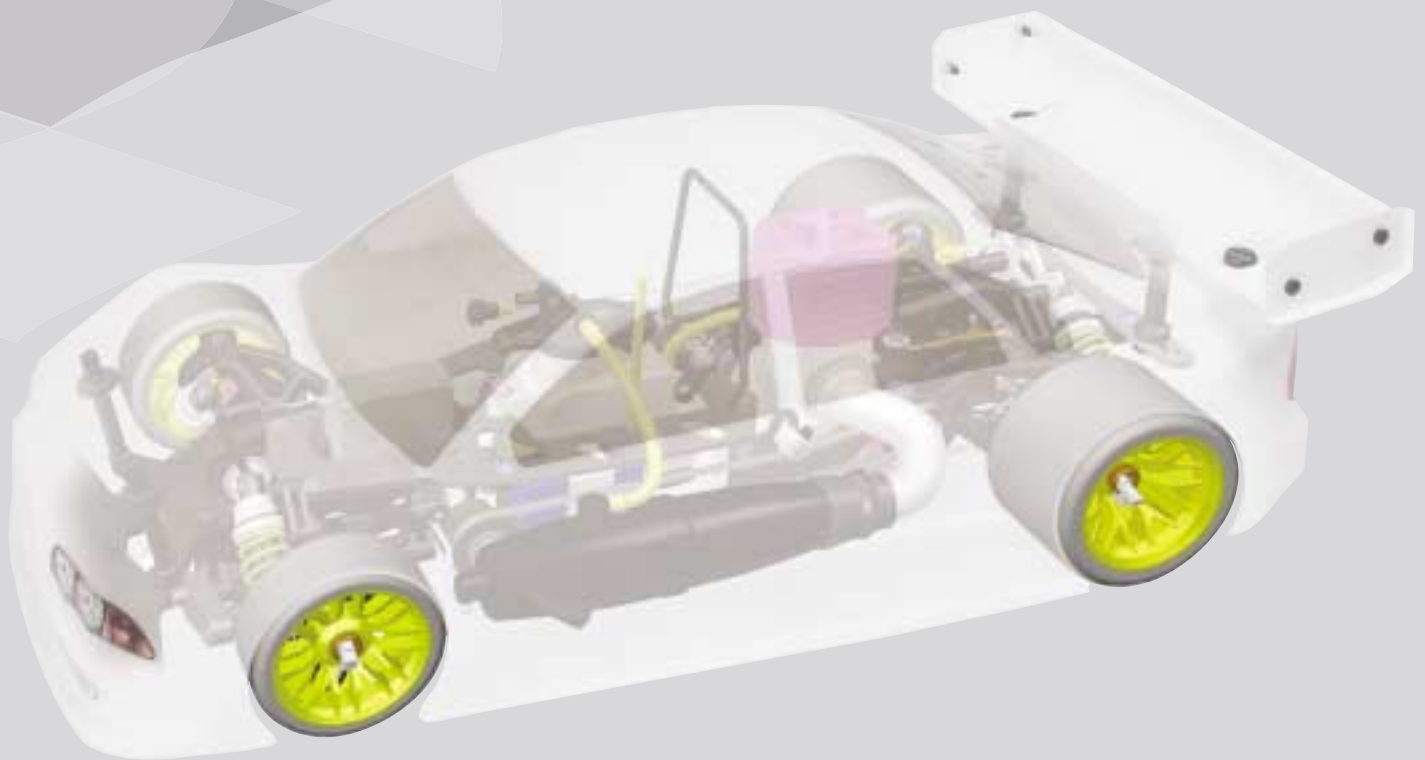


SERPENT 835

1:10 SCALE 235mm GAS ON-ROAD COMPETITION



Reference Guide

SERPENT 835

Introduction

Parts list and Exploded views

The parts list and the exploded views for the Serpent 835 are separate from the Instruction manual. The exploded views show all the parts for a particular assembly step, together with the Serpent part number. In the parts list at the back of this booklet you will find with the part number the name of the part. Besides all the Serpent 835 parts as used in this car kit, you will also find in the part list all the optional parts for the Serpent 835, as well as a listing of general items like fasteners and promotional items.

Serpent will regularly update the Serpent 835 parts list and will make it available on the Serpent 835 product page on myTSN, check under 'Downloads'. This product page can be accessed directly at the following address:

www.myTSN.com/Serpent835

Make sure to check out the Serpent 835 product page on myTSN frequently. All information about your car can be found here: publications, news items, set-ups, FAQ's, images, downloads, video's and interesting forums in several languages. MyTSN provides you with an enormous amount of interesting and often valuable information about the Serpent 835, information provided by Serpent, its factory and team drivers, and experienced users from around the world. Often this information is even available in several languages! If you're not a member of myTSN.com yet, sign up today and experience why Serpent excels not only on the track, but also on the Internet.

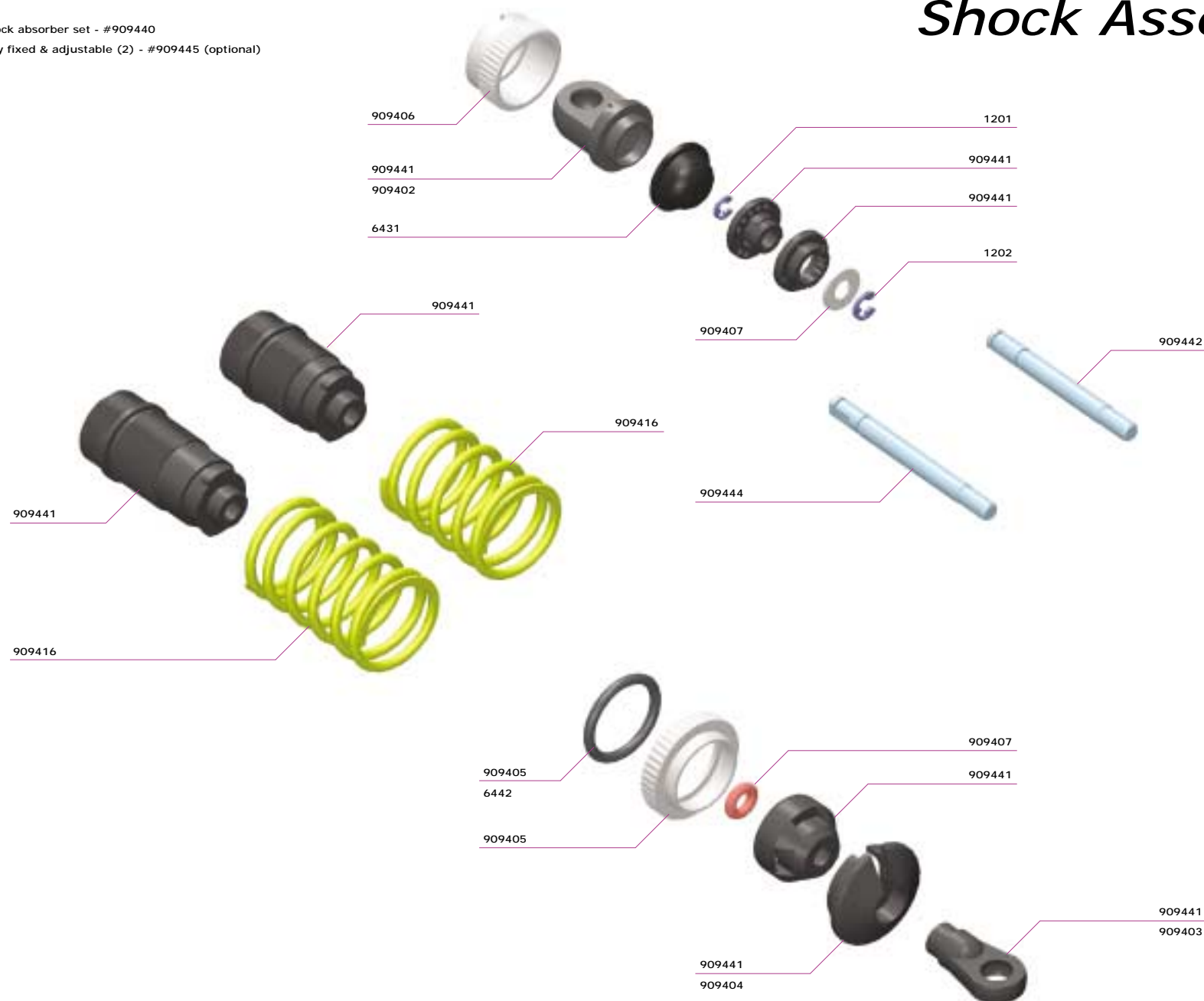
Contents

	<i>Description</i>	<i>Page</i>
1.	Shock Assembly	3
2.	Front Assembly	4
3.	Rear Assembly / Differential Assembly	5
4.	Radio Plate Assembly	6
5.	Radio Plate Mounting	7
6.	Gearbox Assembly	8
7.	Centax Assembly	8
8.	Final Assembly	9
9.	Parts List	10

PERFORMANCE THROUGH EVOLUTION

Complete Shock absorber set - #909440
 Piston set key fixed & adjustable (2) - #909445 (optional)

Shock Assembly

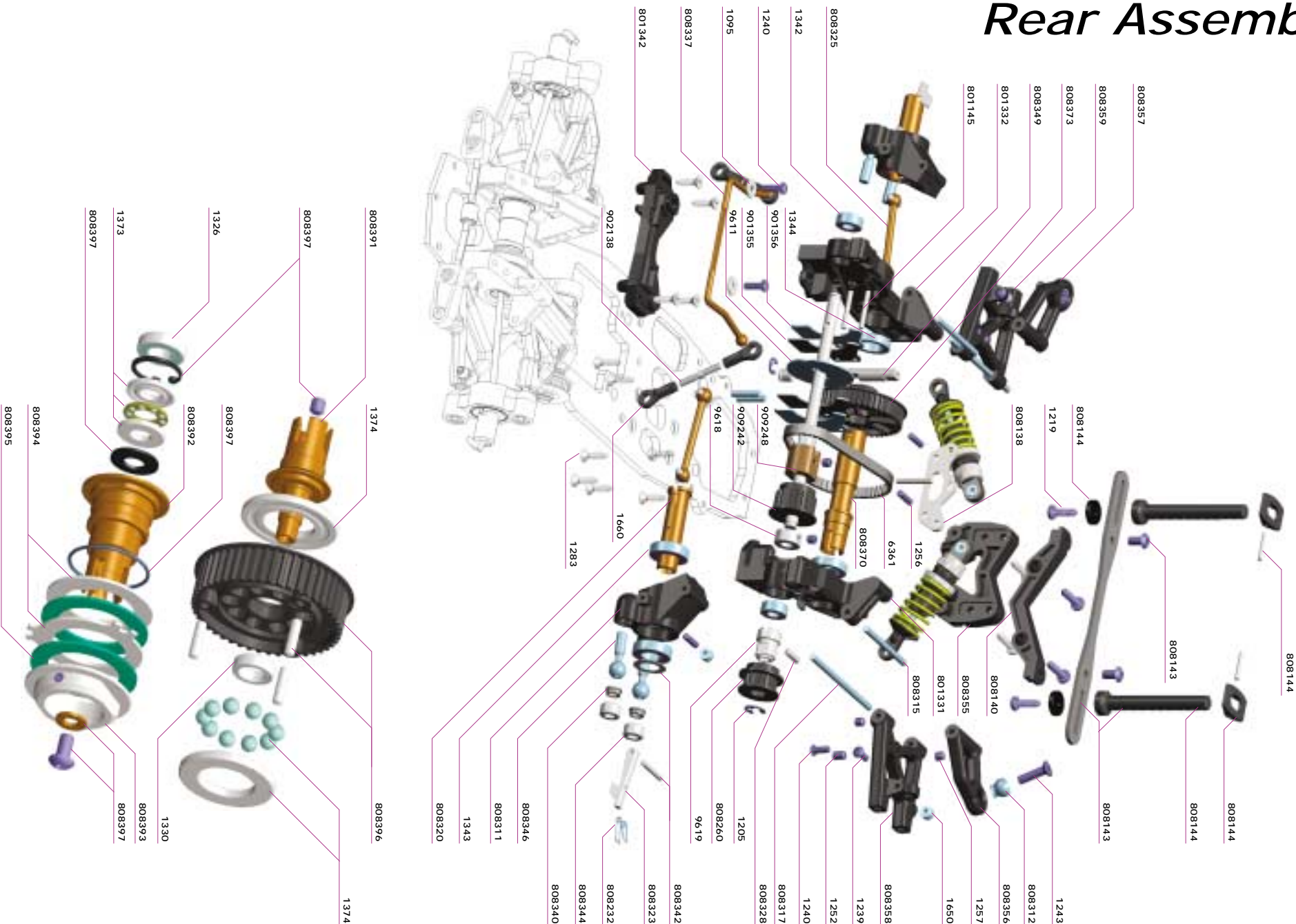


This diagram illustrates the front assembly of a vehicle, showing the relationship between various components and their assembly order. The components are labeled with part numbers and are arranged in an exploded view to show their relative positions and how they fit together.

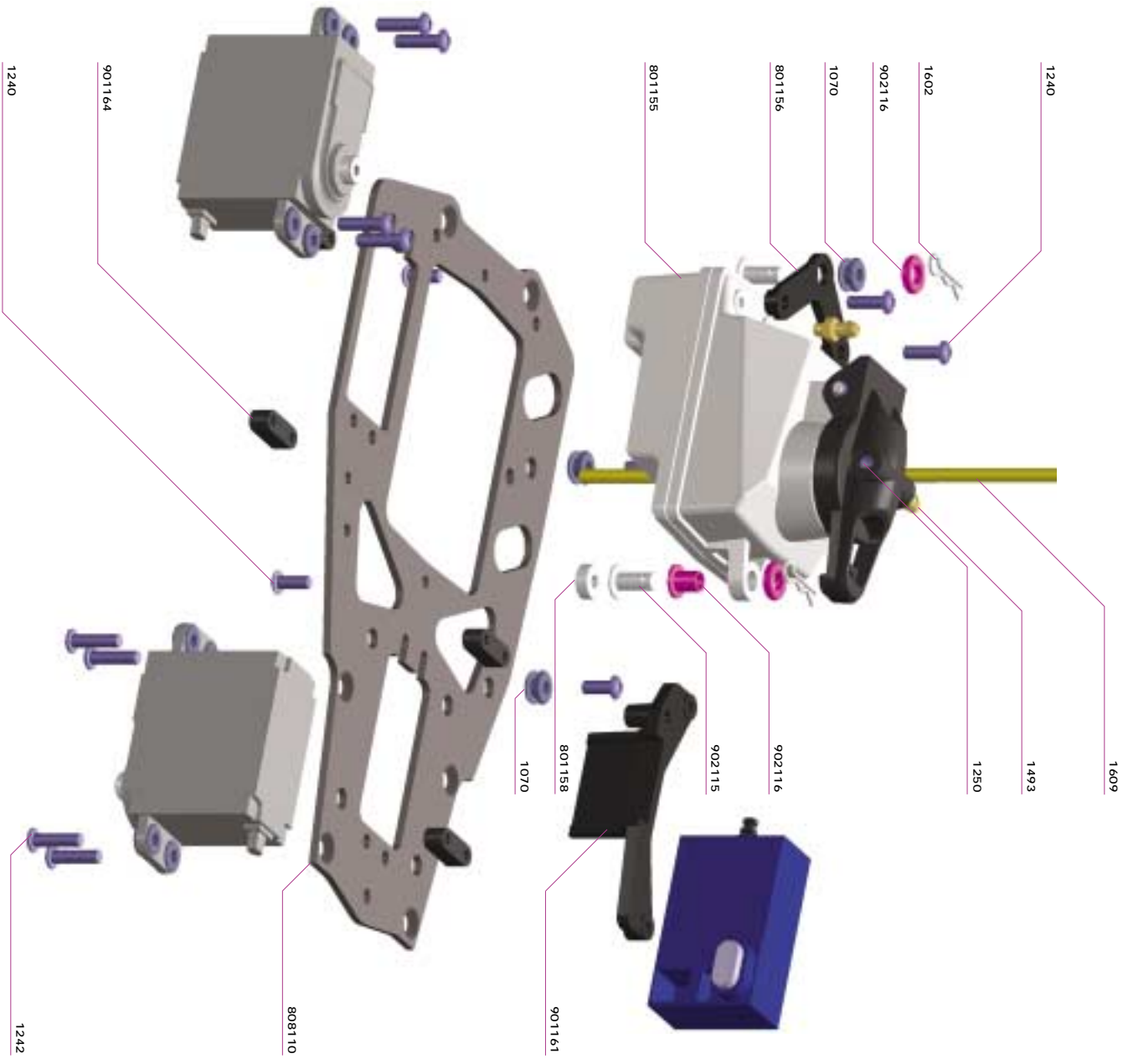
Key Components and Assembly Order:

- 808208**: Top mounting bracket.
- 808202**: Main front frame component.
- 808204**: Side frame component.
- 808206**: Side frame component.
- 808210**: Side frame component.
- 808222**: Side frame component.
- 1242**: Side frame component.
- 1258**: Side frame component.
- 909215**: Side frame component.
- 1283**: Side frame component.
- 1257**: Side frame component.
- 1065**: Side frame component.
- 909217**: Side frame component.
- 808220**: Side frame component.
- 808212**: Side frame component.
- 1207**: Side frame component.
- 808225**: Side frame component.
- 1257**: Side frame component.
- 808265**: Side frame component.
- 808250**: Side frame component.
- 1342**: Side frame component.
- 1205**: Side frame component.
- 808360**: Side frame component.
- 808229**: Side frame component.
- 808221**: Side frame component.
- 909216**: Side frame component.
- 1261**: Side frame component.
- 1344**: Side frame component.
- 902252**: Side frame component.
- 808103**: Side frame component.
- 808265**: Side frame component.
- 808261**: Side frame component.
- 808214**: Side frame component.
- 808201**: Side frame component.
- 1257**: Side frame component.
- 808203**: Side frame component.
- 808205**: Side frame component.
- 1256**: Side frame component.
- 1650**: Side frame component.
- 909215**: Side frame component.
- 808342**: Side frame component.
- 808223**: Side frame component.
- 808232**: Side frame component.
- 808344**: Side frame component.
- 808340**: Side frame component.
- 808346**: Side frame component.
- 1239**: Side frame component.
- 808207**: Side frame component.
- 1343**: Side frame component.
- 808215**: Side frame component.

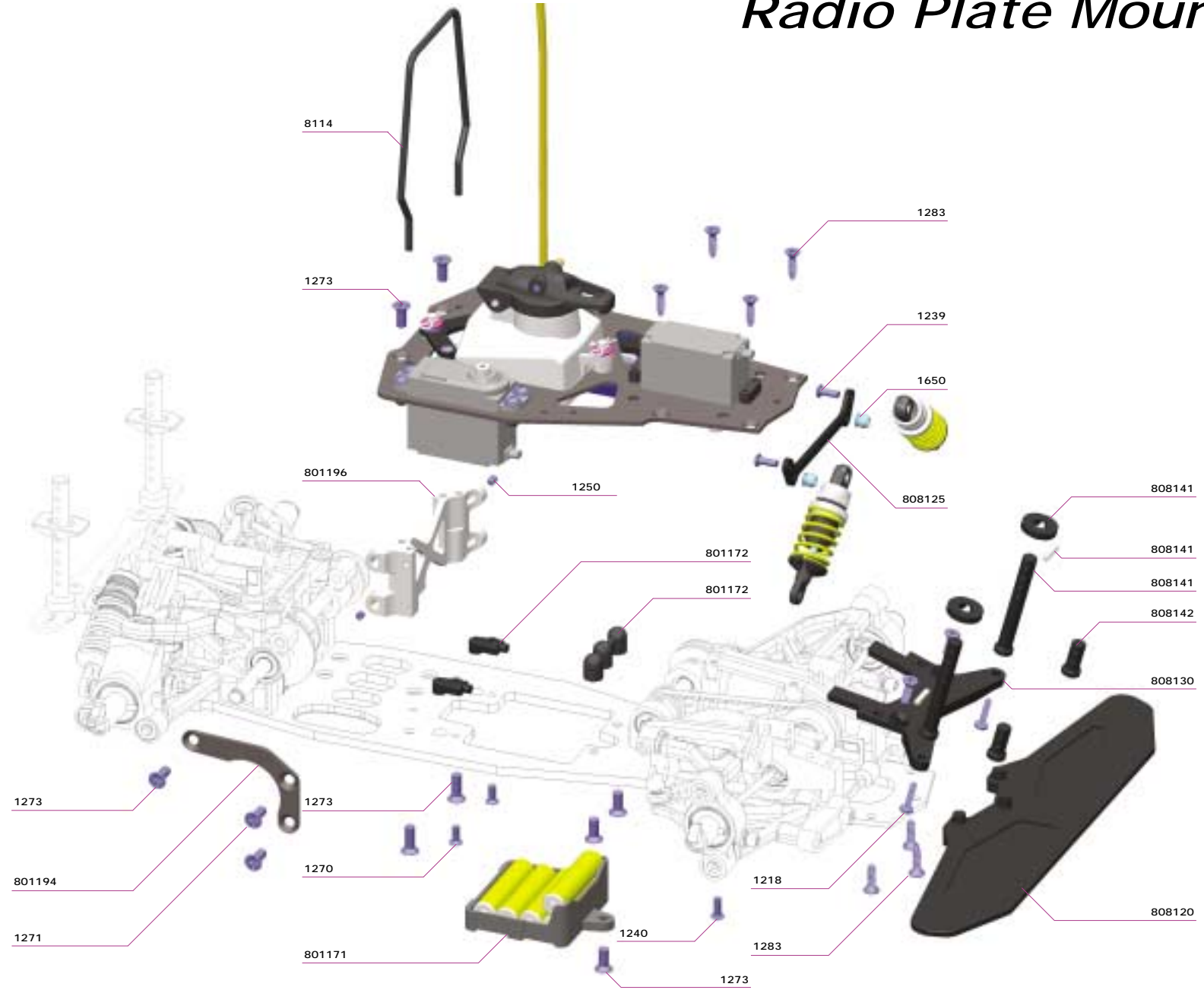
Rear Assembly



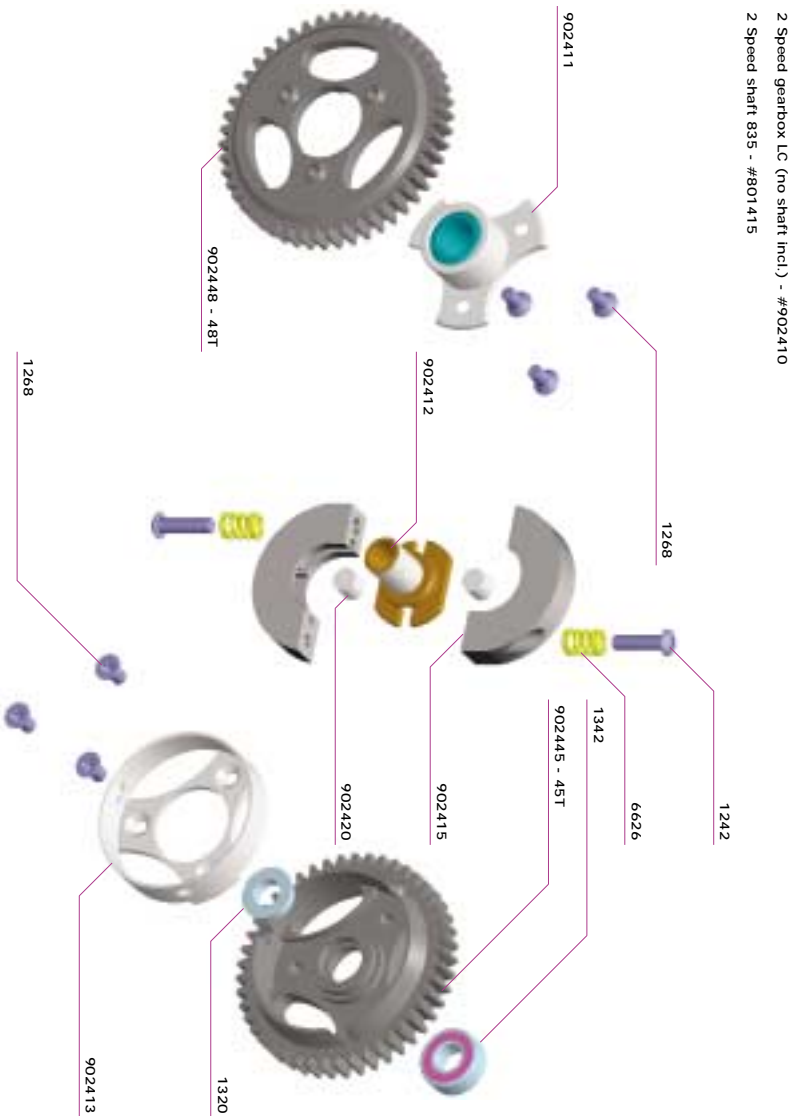
Radio Plate Assembly



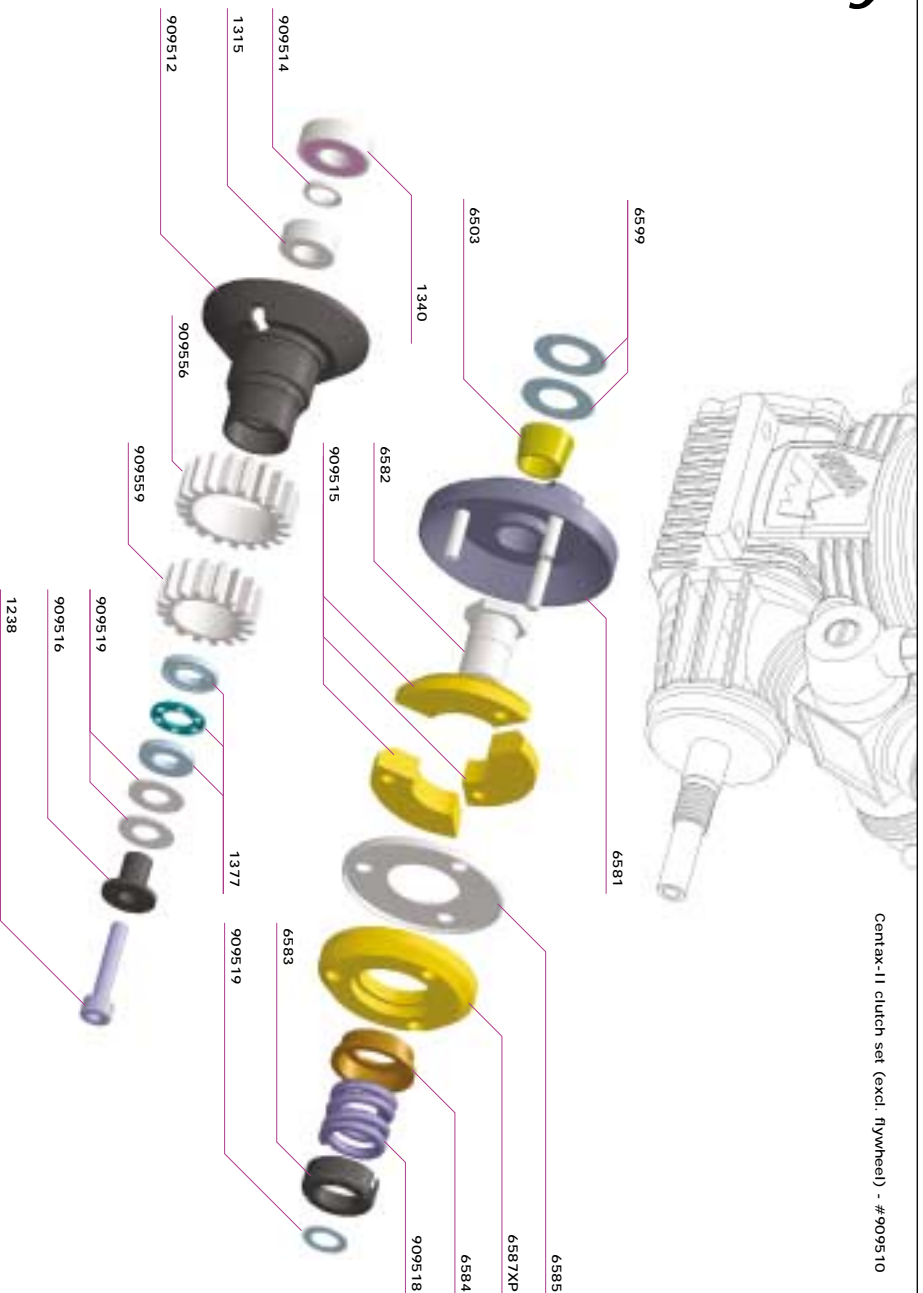
Radio Plate Mounting



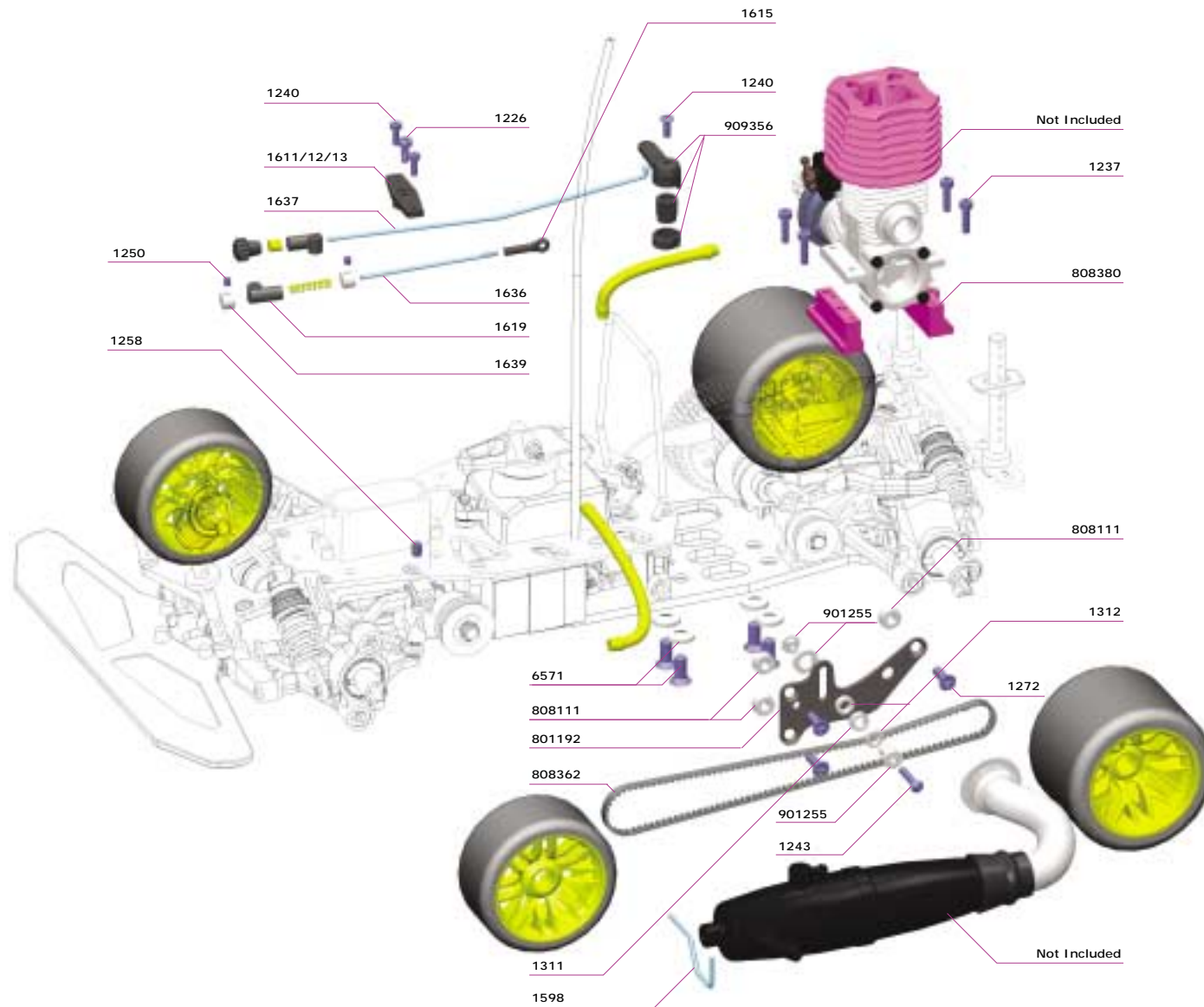
Gearbox Assembly



Centax Assembly



Final Assembly



Parts List - Serpent 835

To ensure that you have the most up to date parts list you can download the latest version from the internet by simply typing in the following URL and selecting the file from the 'downloads' section.

www.myTSN.com/Serpent835

ART No. DESCRIPTION

808070 Serpent 835 2WD
808075 Serpent 835 4WD

Manuals & Decals

808185 Instructions-set up Serpent 835
808186 Reference guide Serpent 835
808187 Decal-sheet Serpent 835

Radio Installation

1634 Servo saver 1/10 universal
1636 Uni.throttle linkage
1637 Uni. Brake linkage
1619 Wire-guider nylon
1611 Servo lever 23T
1612 Servo lever 25T
1613 Servo lever 24T
8143 Track-rod set (2)
901161 Mounting bracket receiver
801171 Battery-case
801172 Battery-case connector
801170 Battery-set sealed-wired (4+1)

Fuel tank

801155 Fueltank 75cc with filter and AFL-cap
1431 Fueltank foam seals /clip
1493 Pressure nipple (4)
1494 Silicone tubing 2x5x50 white
902115 Mounting-pin tank + rubber cap (2)
902116 Cap rubber for mounting pin tank (2)
1602 Tank-clips small (10)
801156 Tank-bracket rear

Ball Bearings

1312 Ballbearing 5X8X3 flanged
1342 Ball-bearing 6X13 HS Purple (2)
1343 Ball-bearing 10X19 HS Purple (2)
1344 Ball-bearing 12X18 HS Purple (2)

Shock Absorbers

909440 Shockabsorbers-set nylon key-4-step (2)
909441 Shock-parts nylon f+r key-type
909442 Pistons rod FR key hardened (2)
909444 Pistons rod RR key hardened (2)
909445 Shock-pistons fixed+adj (2)
909402 Pivot point upper (2)
909403 Ball-joint short 6mm (4)
909404 Spring support washer (4)
909405 Shock-adj nut alu + o-rings (4)
909406 Shock-cap-nut alu. (2)
909442 Pistons rod FR key hardened (2)
909444 Pistons rod RR key hardened (2)
6431 Membranes (4)
6442 O-ring for #909405 (10)
909407 O-ring set + washers
909414 Spring-set D=1.5 L=27-22.7 orange (4)
909415 Spring-set D=1.5 L=27-22.7 white (4)
909416 Spring-set D=1.6 L=27-22.7 yellow (4)
909417 Spring-set D=1.7 L=27-22.7 red (4)
909418 Spring-set D=1.8 L=27-22.7 blue (4)

Serpent H-Q Shockabsorber oil

1670 Silicone oil 20W
1674 Silicone oil 25W
1671 Silicone oil 30W
1675 Silicone oil 35W
1672 Silicone oil 40W
1676 Silicone oil 45W
1673 Silicone oil 50W

Chassis & Radio plate

808103 Chassisplate alu. 4mm T6
808110 Radioplate carbon 2mm

Body mounts

808130 Bodyplate front
808138 Shocktower rear carbon + 6mm balls
808139 Shocktower rear carbon
808140 Bodymount-set rear TouringCar
808141 Body-support long front (2)
808142 Body-supports short front (2)
808143 Body-support set rear carbon + 808144
808144 Bodymounts universal
808150 Bodymount -set rear GTP EV2
808151 Pin lower bodymount EV2 (2)
808152 Bushing alu. threaded
808153 Bodymount rear GTP EV2
808154 Wishbone bodymount GTP EV2 (2)
808155 Centering unit nylon GTP EV2
909344 Pin upper bodymount (2)

Front Section

808120 Bumper
808201 Front bearing block left
808202 Front bearing block right
808203 Wishbone front upper left
808204 Wishbone front upper right
808205 Wishbone front lower left
808206 Wishbone front lower right
808207 Steeringblock left
808208 Steeringblock right
808210 Pivot pins front upper (2)
808212 Pivot pins front lower (2)
808215 Front wheelaxles 4wd (2)
808220 Front drive-shafts (2)
808221 Front axle alu with OW bearings
808229 Pulley / flange 24T frontshaft
1065 O-ring for alu front axle (10)
808222 Inner driveshaft adaptor (2)
808223 Q-C front levers aluminium (2)
808232 Spring quickchange system (4)
808245 Anti-roll bar set front adjustable
909215 Anti-roll bar levers + exc.
909216 Adj. Anti-roll bar male
909217 Adj. Anti-roll bar female
808125 Shocktower carbon front M2

Middle Section

801196 Radioplate bracket aluminum
801192 Chassis stiffener L carbon
801194 Chassis stiffener R carbon
808111 Spacer sideplate Left (3)
808250 Middle bracket 4wd
902252 Middle shaft
808265 Pulley adaptor alu.
808225 Pulley/washer 16T middle shaft
808261 Pulley/washer 24T middle shaft
808360 Drive-belt front 4mm
808362 Drive belt side 4mm
8114 Roll-over bar

Rear Section

801331 Rear bearingblock left
801332 Rear bearingblock right
808355 Rear plate
801342 Diskbrake bracket
808356 Wishbone rear upper left
808357 Wishbone rear upper right
808358 Wishbone rear lower left
808359 Wishbone rear lower right
808311 Up-right low (1)
808312 Ball 9mm chromed (2)
808315 Pivot pins rear upper (2)
808317 Pivot pins rear lower (2)
808320 Rear wheelaxles set (2)
808323 Q-C levers rear alu (2)
808232 Springs quick-change system (4)
808325 Rear drive-shafts (2)
808337 Rear anti-roll bar 1.5mm

902138 Linkages rear anti-roll bar L+R (2)
1095 Shims nylon rear anti-roll bar (2)
808340 Nylon ball-cups set (12)
808342 Wheelaxle pin/shims set (4)
808344 Alu.adjusting nuts M10 (4)
808346 Pivot.balls 8.5mm (2)

Brake-System

901355 Brake pads black (4)
901356 Brake-plates steel (2)
9611 Brake -disk (2)
909356 Brake lever / spring
909248 Alu. brake/pully adaptor
909242 Pulley 22T 9mm
9618 Alu.collar brake-pulley
808349 Disk-brake cam hard anodised

Transmission

4WD
808370 Solid rear axle set
808373 Solid axle pully 47T
909242 Pully 22T

2WD

808390 Differential FPS
808391 Diff axle long FPS
808392 Diff axle short FPS
808393 Diff adj. Nut fps
808394 Diff friction steel plate set FPS
808395 Diff friction plate FPS (2)
808396 Diff pulley 47T + pins FPS + pro
808397 Diff FPS fastening material
808376 Diff pully 47T
6361 Rear belt kevlar 6mm
1326 Ballbearing 7x14
1330 Ballbearing 8x12x3.5 (2)
1373 Thrust bearing 6x14
1374 Thrust bearing 15x28x9 diff

2-Speed Gearbox

902410 2-speed gearbox LC (no shaft incl)
801415 2-speed axle 4WD 705-835
902415 2-speed clutch shoes set LC
902444 2-speed gear 44T (2ND) LC
902445 2-speed gear 45T (2ND) LC
902446 2-speed gear 46T (2ND) LC
902447 2-speed gear 47T (1ST) LC
902448 2-speed gear 48T (1ST) LC
902449 2-speed gear 49T (1ST) LC
902450 2-speed gear 50T (1ST) LC
6626 Springs / screws 2-speed
902411 Drive-flange alu with owb LC
902413 Clutch bell alu LC
902412 Adaptor 2-speed LC
902420 Needle steel 5X5 (2)

Clutch System

909510 Centax II clutch-set (excl. Flywheel)
909512 Centax II clutch-housing universal
909555 Centax gear-pinion alu. 15T
909556 Centax gear-pinion alu. 16T
909557 Centax gear-pinion alu. 17T
909558 Centax gear-pinion alu. 18T
909559 Centax gear-pinion alu. 19T
909560 Centax gear-pinion alu. 20T
6504 Conus flywheel (3)
6582 Centax clutch-nut
6585 Centax thrust washer
6584 Centax spring cup
6583 Centax pre-load adjusting nut
909514 Centax II bearing spacer 5x7
909516 Centax II spacer thrustbearing
6581 Centax flywheel 35mm
909518 Centax II coil spring 1.8
909515 Centax II centrifugal shoes (3)
6587XP Centax clutch shoe XP
6599 Centax shim-set 7x13 (10)
1093 Centax 5x6.8 shim-set 0.1 (2) 0.3 (1)
1377 Centax II thrust-bearing 5x10

Engine Mounts

808380	Engine mounts SX-15 purple M2
6571	Engine mounting screws/washers
1599	Exhaust mounting wire

Wheels

808815	Front wheels neon yellow BBS (2)
808845	Rear wheels neon yellow BBS (2)
808851	Tire savers (10)

Bodies and wings

1768	Body BMW M3
1776	Body Opel Vectra
1779	Body Porsche 962 MS
1780	Body Alfa 156
1794	Body Volvo S40
1789	Body Mc Laren GT1
1795	Body Porsche GT1
1781	Wing set Lexan rear TC
1786	Wing set Lexan rear TC EDLUND
1783	Trim-strip lexan with nyl.screws
1601	Body clips (10)

Optionals

1070	Grommits rubber soft (4)
1360	Ballbearing 6x13 PHQ (2)
1361	Ballbearing 10x19 PHQ (2)
1376	Thrustbearing light 15x28x9
1495	Silicone tubing 2x5x50 yellow
1496	Silicone tubing 2x5x50 orange
1497	Silicone tubing 2x5x50 green
1498	Silicone tubing 2x5x50 pink
1604	Antenna rod pink with tip (2)
1605	Antenna rod green with tip (2)
1606	Antenna rod black with tip (2)
1607	Antenna rod blue with tip (2)
1608	Antenna rod orange with tip (2)
1609	Antenna rod purple with tip (2)
1666	Transponderholder carbon star
1680	One-way lube bearing oil
1690	Cleaning gum
801157	Tank-bracket rear carbon
801255	Drive belt Kevlar 4mm
808219	Front axle alu Pro version
808223	Inner driveshaft adaptors light (2)
808251	Middle bracket aluminium purple
808347	Pivot-ball 8.5mm alu coated (8)
808361	Belt 5mm front
808372	Solid axle light
909150	Servo holder steering-servo Futaba
909151	Servo holder steering-servo KO
909152	Servo holder steering-servo Sanwa
909153	Servo holder steering-servo JR
909155	O-ring / grommets (4+4)
909218	Lever front anti-rollbar alu & exc.
909330	Anti-roll bar rear 3mm
909335	Anti-roll bar rear adjustable
909410	Shock-body alu PTFE 4-step front (2)
909411	Shock-body alu PTFE 4-step rear (2)
909575	Centax gear-pinion steel 15T
909576	Centax gear-pinion steel 16T
909577	Centax gear-pinion steel 17T
909578	Centax gear-pinion steel 18T
909579	Centax gear-pinion steel 19T
909580	Centax gear-pinion steel 20T

Tools

1016	Torx tool
1460	Camber gauge
909590	Gear pinion wrench
909592	Centax clutch housing gripper
902310	Mounting-tool pivotball

Accessories

1400G	Powerstart starterbox grey
1414	Positioning support for S-835/M2/Vec
1395	Glowdriver with battery & charge cable
1396	Glowtronic: electronic
1429	Cable-set 12V for Powerstart
3400	Break-in stand modelengines

Fastening Material

1201	E-clip 1,9 (10) R1
1202	E-clip 2,3 (10) R2
1203	E-clip 3,2 (10) R3
1204	E-clip 4.0 (10) R4
1205	E-clip 5.0 (10) R5
1207	E-clip 7.0 (10) R7
1208	Cir-clip 10X1 (10) T10
1209	G-clip 14X1 (10) S14
1212	Screw RH PH 2.9X9.5 (10) A5
1213	Screw RH PH 2.9X13 (10) A6
1214	Screw RH PH 2.9X16 (10) A7
1215	Screw RH PH 2.9X19 (10) A8
1216	Screw RH PH 2.9X25 (10) A10
1217	Screw RH PH 3.5X9.5 (10) A12
1218	Screw RH PH 3.5X13 (10) A13
1219	Screw RH PH 3.5X16 (10) A14
1220	Screw RH PH 3.5X19 (10) A15
1225	Screw RH M2X6 (10) C2
1226	Screw RH M2X6 (10) C5
1227	Screw RH PH M3X8 (10) D11
1228	Screw RH PH M3X12 (10) D13
1235	Screw CH allen M3X6 (10) F10
1236	Screw CH allen M3X10 (10) F12
1237	Screw CH allen M3X12 (10) F13
1238	Screw CH allen M3X16 (10) F14
1239	Screw RH allen M3X6 (10) E10
1240	Screw RH allen M3X8 (10) E11
1241	Screw RH allen M3X12 (10) E12
1242	Screw RH allen M3X14 (10) E13
1243	Screw RH allen M3X16 (10) E14
1244	Screw RH allen M4X6 (10) E17
1245	Screw RH allen M4X8 (10) E18
1246	Screw RH allen M4X16 (10) E21
1250	GrubscREW M3X4 (10) J9
1251	GrubscREW M3X6 (10) J10
1252	GrubscREW M4X10 (10) J19
1255	GrubscREW M3X10 (10) H12
1256	GrubscREW M3X12 (10) H13
1257	GrubscREW M4X4 (10) H16
1258	GrubscREW M4X6 (10) H17
1259	GrubscREW M5X5 (10) H24
1260	GrubscREW M5X6 (10) H25
1261	GrubscREW M4X10 (10) H17
1269	Screw CSH PH M3X16 (10) G14
1270	Screw CSH PH M3X8 (10) G11
1271	Screw CSH PH M4X8 (10) G18
1272	Screw CSH PH M4X10 (10) G19
1273	Screw CSH PH M4X12 (10) G20
1274	Screw CSH PH M4X16 (10) G21
1275	Screw CSH PH M5X12 (10) G27
1278	Screw CSH ALLEN M4X20 (10)
1279	Screw CSH ALLEN M4X25 (10)
1280	Screw CSH PH 2,2X6,5 (10) B2
1281	Screw CSH PH 2,9X9,5 (10) B5
1282	Screw CSH PH 3,5X9,5 (10) B12
1283	Screw CSH PH 3,5X13 (10) B13
1284	Screw CSH PH 3,5X16 (10) B14
1285	Screw CSH PH 4,2X13 (10) B20
1290	Washer 3.2X7 (10) N3
1291	Washer 2.5X6 (10) N4
1292	Spring washer 6,2X14X0,9
1293	Spring washer 7,2X14X0,8
1295	Lock washer 3.2x8 (10)
1297	Nut nylock M3 (10) L3
1298	Nut nylock M4 (10) L4

Merchandising

1999	NovaMega cap grey Deluxe
1990	Serpent cap grey Deluxe
1858	Serpent track banner nylon 140x80cm
1859	Serpent circuit track decal 140x80cm
1980	Kit-bag Serpent black-grey
	Serpent T-shirt (check website)
	Serpent sweater (check website)
	Serpent fleece (check website)
	Serpent jackets (check website)

myTSN.com 

myTSN.com 

www.myTSN.com/Serpent835

SERPENT
MOTORSPORT

P.O. Box 180, 2100 AD Heemstede
The Netherlands, Europe.
Tel: (31) 23 529 2068
Fax: (31) 23 528 4950
E-mail: info@serpent.com

Serpent USA, Inc.
West Park Center,
2830 NW 79th Avenue,
Miami, Florida 33122, USA.
Tel: (305) 639 9665
Fax: (305) 639 9658
E-mail: info@serpent-usa.com

#808186 - Version 1