



INSTRUCTION MANUAL

& REFERENCE GUIDE



The Serpent S811-B 2.0 Cobra is a complete new platform for the 1/8 scale gas offroad category of racing. The Serpent S811-B 2.0 Cobra is designed to be a world champion, while still being easy to use, assemble, and set up. You are now part of the worldwide network of Serpent drivers, which gives you superior technical support and access to many benefits that only Serpent drivers can enjoy.

The Serpent S811-B 2.0 Cobra offers state of the art specifications and leads the way in 1/8 scale gas offroad chassis design, using all the knowledge our designers have gathered from racing offroad cars for over 15 years, into this design too. Continuously pushing the performance envelope, Serpent's engineers have added many new and innovative features that help take your Serpent S811-B 2.0 Cobra into the winner's circle. Designed, tested and raced by Billy Easton, USA. World Champion.

INSTRUCTIONS

Serpent's long tradition of excellence extends to the instruction manuals, and this instruction manual is no exception. The easy-to-follow layout is richly illustrated with 3D-rendered full-color images to make your building experience quick and easy. Following the instructions will result in a well-built, high-performance race-car that will soon be able to unleash its full potential at the racetrack.

This instruction manual has been divided into sections that will logically lead you through the assembly process of your Serpent S811-B 2.0 Cobra. Follow the assembly steps in the order presented to ensure that no problems occur during assembly.

Each step indicates all the fasteners, bearings and small parts used.

Bag numbers identify the kit bag(s) that contains the appropriate parts.

EXPLODED VIEWS AND PARTS LIST

The exploded views and parts lists for the Serpent S811-B 2.0 Cobra are included in the back of this manual. The exploded views show all the parts of a particular assembly step along with the Serpent part number. The parts lists indicate the part number and name of each part for easy reference when ordering.

The printed instruction manual included with your Serpent S811-B 2.0 Cobra kit is very complete, though due to continuous product development, more up-to-date information may be provided at our **Serpent.com** website.

All information about the Serpent S811-B 2.0 Cobra is accessible from the Serpent S811-B 2.0 product page which can be found on Serpent.com and can be accessed by simply typing **serpent.com/600008** into your web browsers address bar.

From the Serpent S811-B 2.0 product page you will find the very latest information about your Serpent S811-B 2.0: reports by team drivers and other experts, tips and tricks, setups, image gallery and downloadable files including the latest version of the instruction manual will be made available as downloadable PDF-files.

Team Serpent



Safety

Read and take note of the 'Read this First section' before proceeding to assemble the car-kit. This car-kit is intended for persons aged 16 or older.

Customer service

Serpent has made a strong effort to make this manual as complete and clear as possible. Additional info may be published in our website:

www.serpent.com or you may ask your dealer or the Serpent distributor for advice, or email Serpent direct: info@serpent.com
The Serpent Facebook, Twitter and Youtube pages give additional means of support and communications.

Instructions, how to use

The kit includes bags, with bag numbers, which refer to the same step in the manual. Open only the indicated bag(s) per step and finish that part of the assembly. Remaining parts will be needed later on in the assembly process.

Instructions

Serpent's long tradition of excellence extends to the instruction manuals, and this instruction manual is no exception. The easy-to-follow layout is richly illustrated with 3D-rendered full-color images to make your building experience quick and easy. Following the instructions will result in a well-built, high-performance race-car that will soon be able to unleash its full potential at the racetrack.

SETUP

In certain assembly steps you need to make basic adjustments, which will give you a good initial setup for your car. Fine-tuning the initial setup is an essential part of building a high-performance racecar.

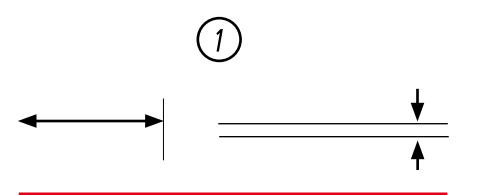

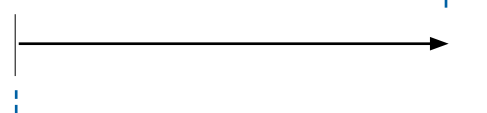


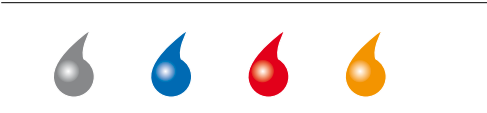


Exploded views and partslist

The exploded views and parts lists for the Serpent S811-B 2.0 are presented in the Reference Guide section in the back of this manual. The exploded views show all the parts of a particular assembly step along with the Serpent part number. The parts lists indicate the part number and name of each part for easy reference when ordering.

Read this first!

- This is a highly technical hobby product, intended to be used in a safe racing environment. This car is capable of speeds in excess of 80 km/h or 50mph. Please follow these guidelines when building and operating this model.
- Parental guidance is required when the builder/user of this car is under 16.
- Follow the building instructions. If in doubt, contact your dealer or importer.
- Be sure to use the proper tools when assembling the car. Always exercise caution when using electric tools, knives and other sharp objects.
- Be careful when using liquids like lubrication oil, fuel or glue. Do not swallow.
- Follow the manufacturer's instruction in case you experience irritation after using the product.
- Be careful when operating the car. Stay away from any rotating parts such as wheels, gears and transmission. Stay away from motor, engine and exhaust pipe system or speedo during and immediately after use, as these parts may be very hot. We advise to use protective hand gloves.
- Only operate this car in a safe environment, like a special racing track or a closed parking lot. Avoid using this car on public roads, crowded places or near infants.
- Before operating this car, always check the mechanical status of the car. Also check that the transmitter and receiver frequencies correspond and are not used by any other racer at the same time. Check that the batteries of the transmitter and receiver- are fully charged.
- After use, always check all the mechanics of the car. We advise to clean the car immediately after use, and inspect the parts for wear or fractures. Replace when necessary. Do not use water, methanol, thinner or other solvents to clean the car.
- Empty the fuel tank (depending on model) if needed and disconnect the receiver battery.
- Store the car in a dry and heated place to avoid corrosion of metal parts.
- Avoid using this car in wet conditions as the water will cause corrosion on the metal parts and bearings and these parts will cease to function properly. If driven in the wet, ensure that all the electric equipment is waterproofed and after use, that all moving parts are dried immediately.

USING THE MANUAL

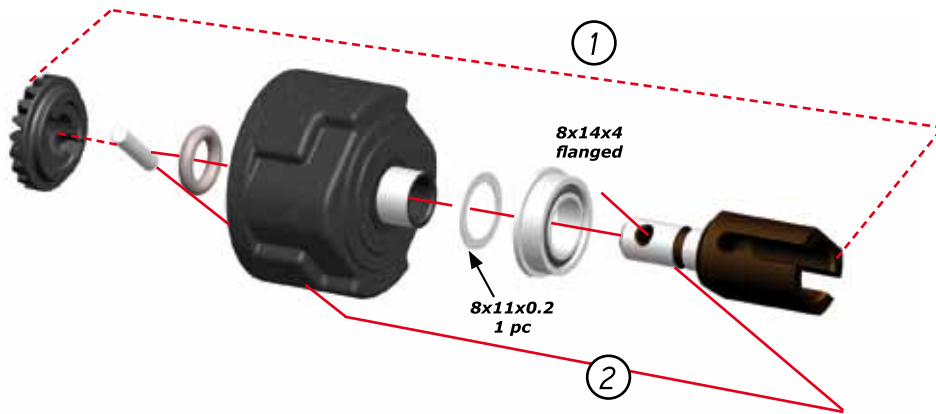
	Step number; the order in which you should assemble the indicated parts
	Length after assembly / Gap between two items
	Assembly path of one item into another
	Group of items (within lines) should be assembled first
	Direction the item should be moved
	Glue one item to another
	Press/Insert one item into another
	Connect one item to another
	Apply transmission grease (Grey), threadlock* (Blue), CA glue* (Red) or differential grease (Orange). (*Items not included.)
	Apply silicone oil.

A

1

CENTER
DIFF
BAG

DIFFERENTIAL CENTER



TIP



TIP

add 2mm oil before assembling the gear

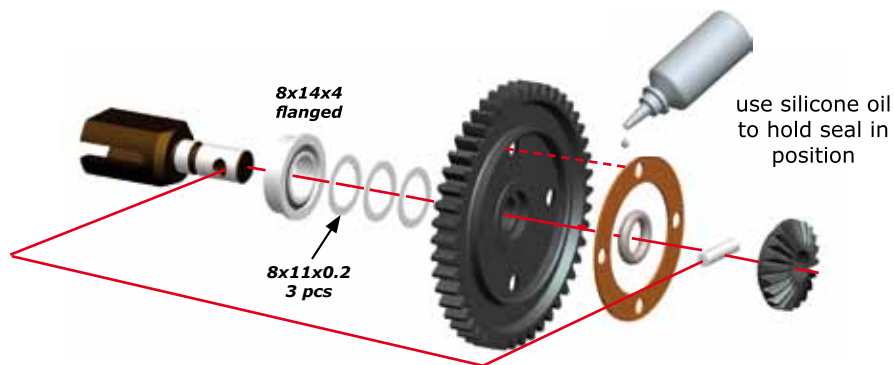


TIP



A

2

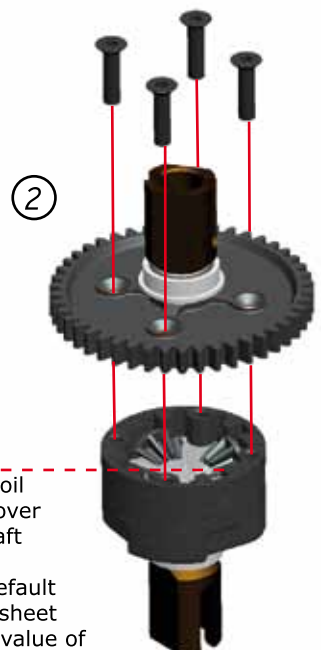


A

3



M3x12



silicone oil
fill just over
gear shaft

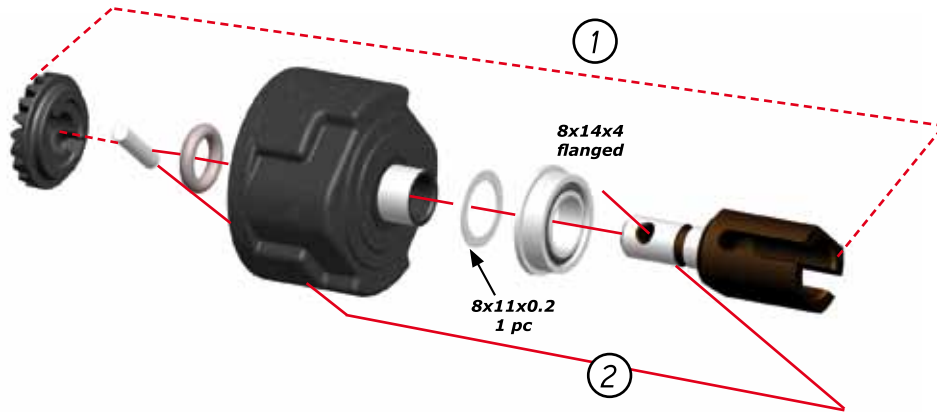
check default
SET-UP sheet
for CST value of
the silicone oil

A

4

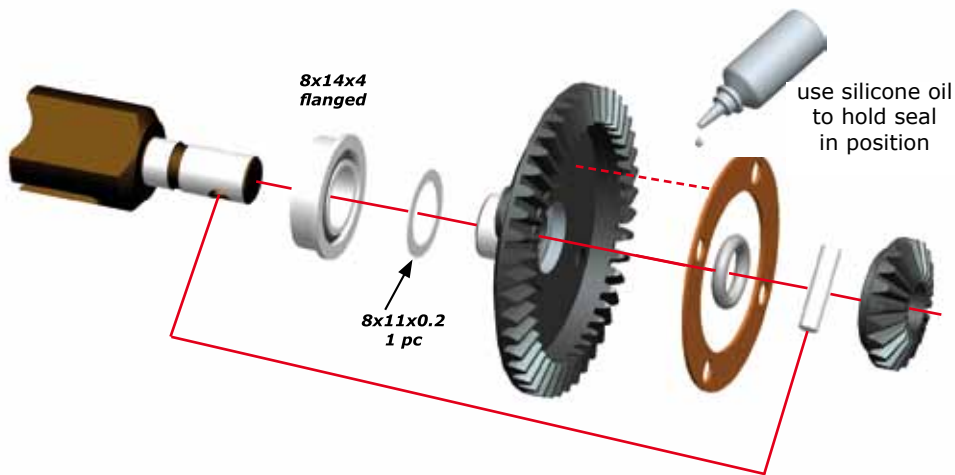
FR/RR
DIFF
BAG

DIFFERENTIAL FRONT/REAR



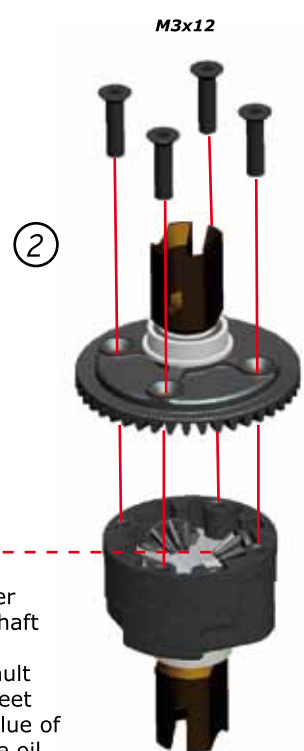
A

5



A

6



B11B2.0

5

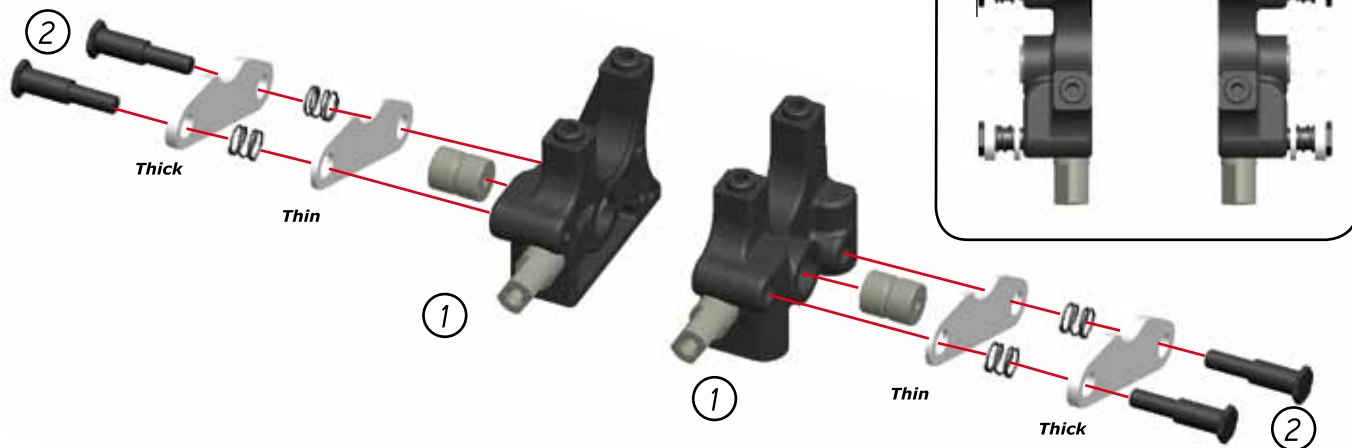
A

7

BAG

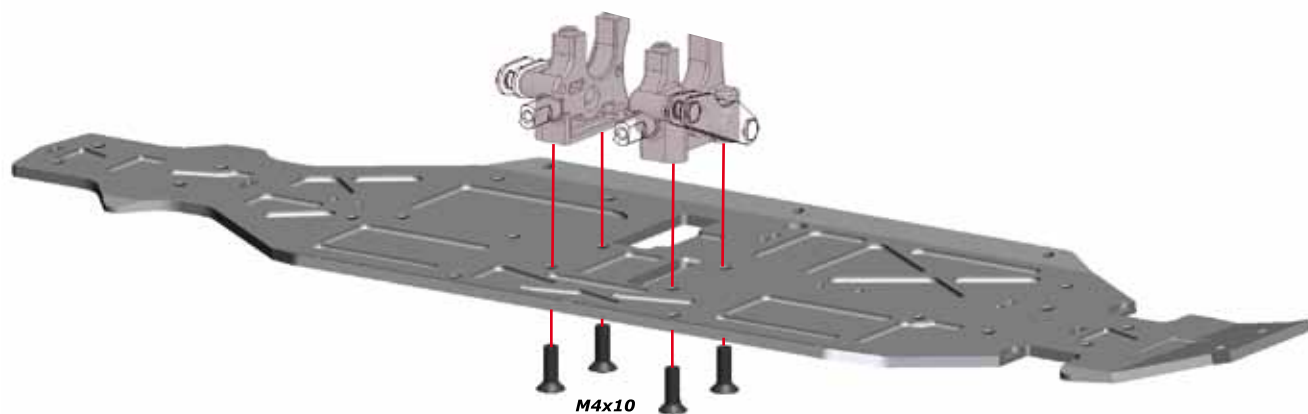
1

CENTER BRAKE ASSEMBLY



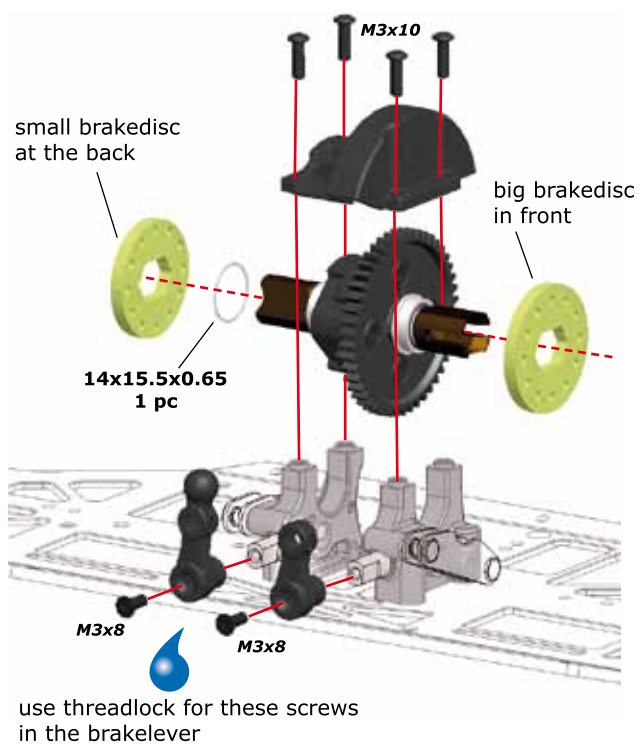
A

8



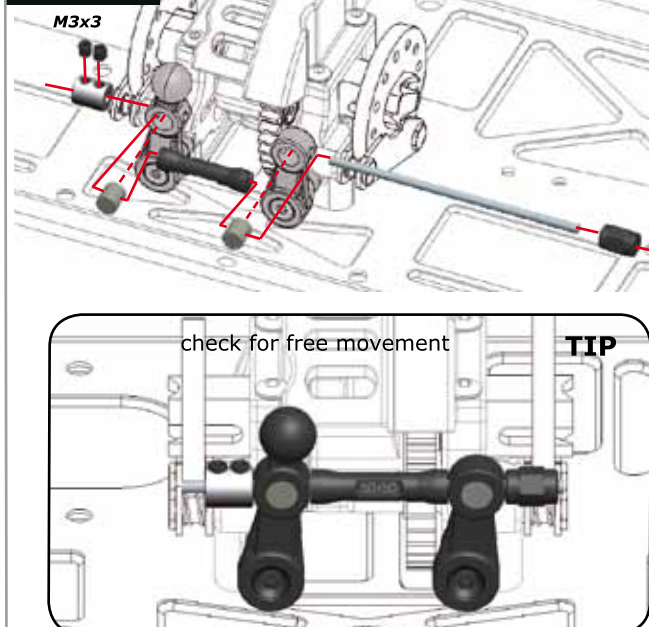
A

9



A

10



BLIP 2.0

6

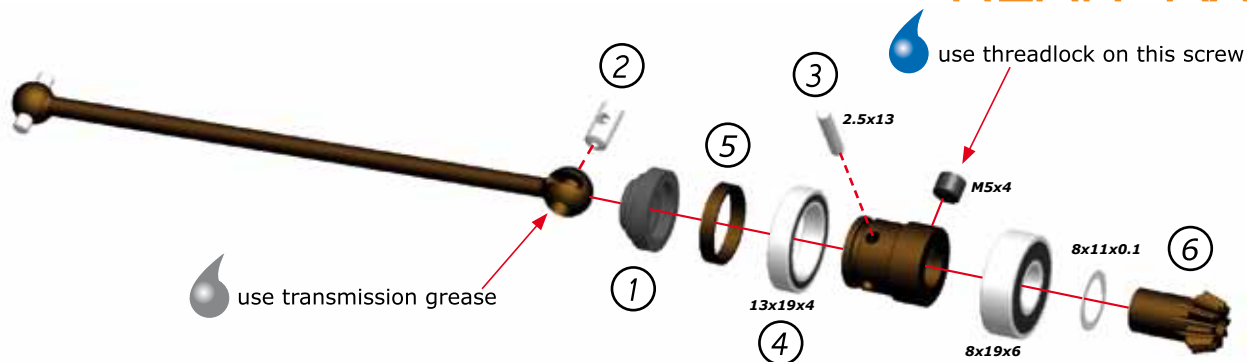
A

11

BAG

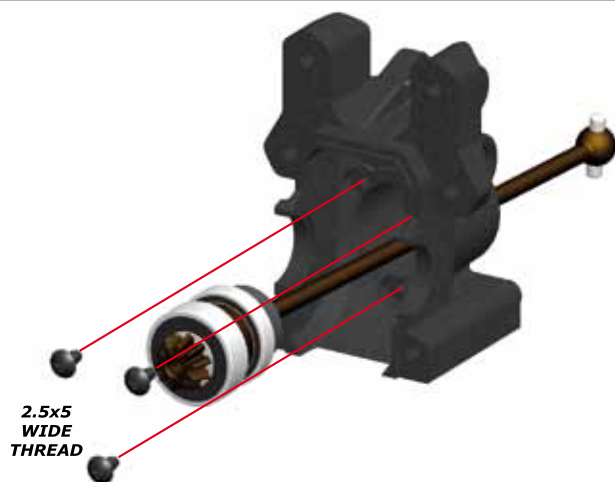
2

REAR AXLE



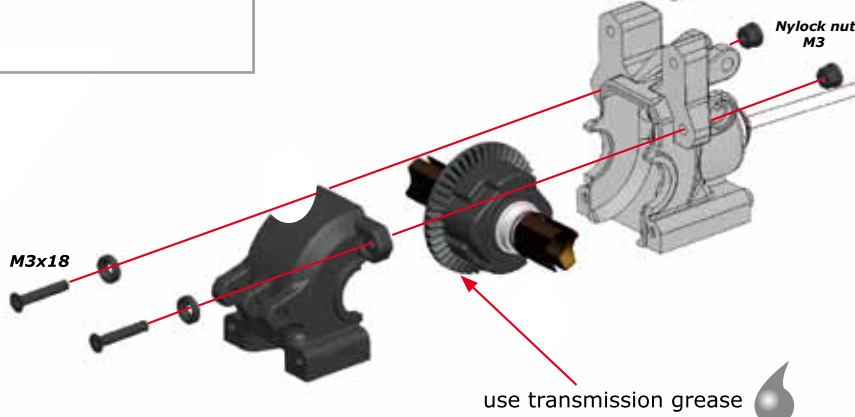
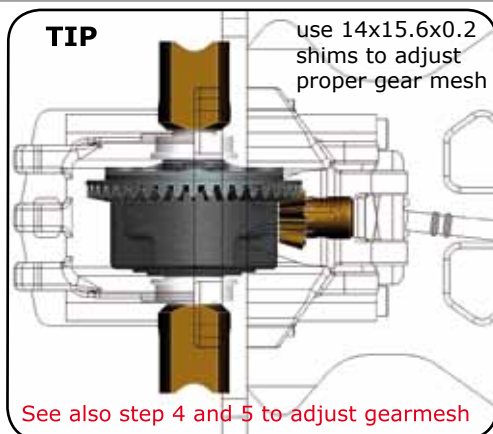
A

12



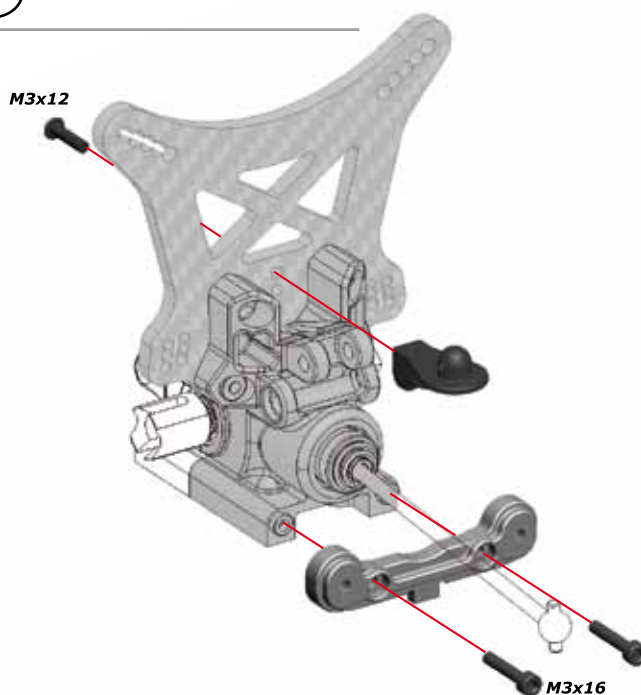
A

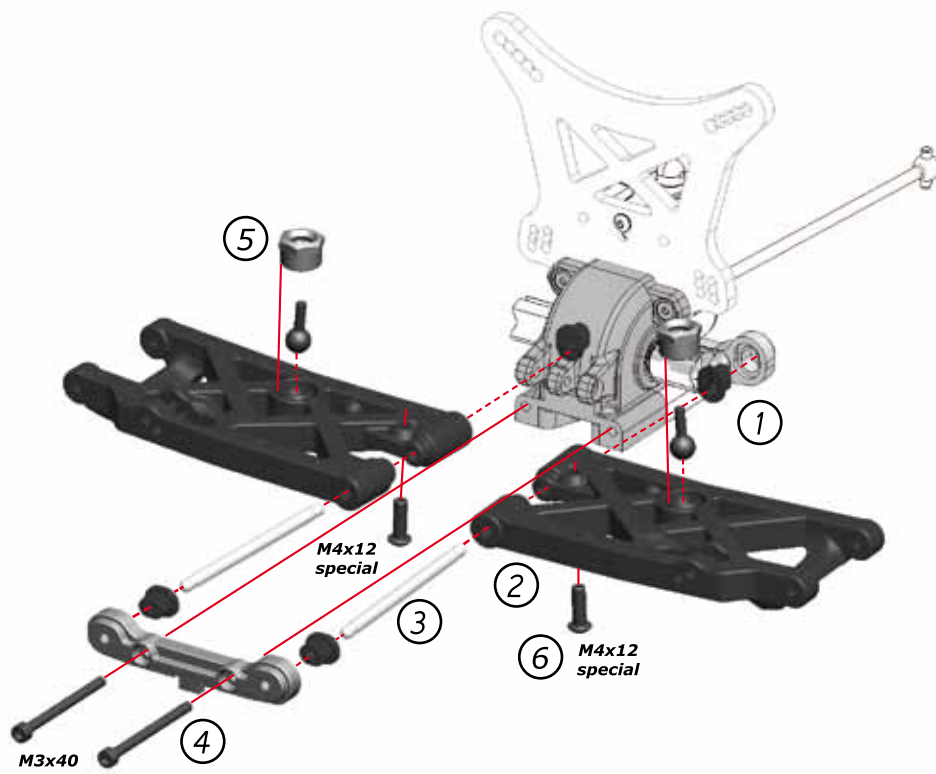
13



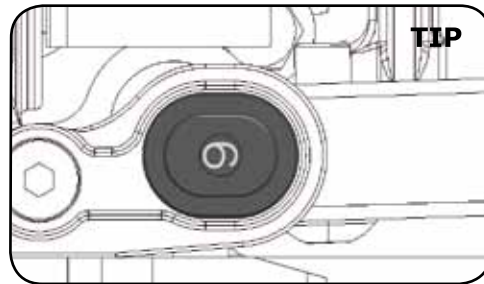
A

14

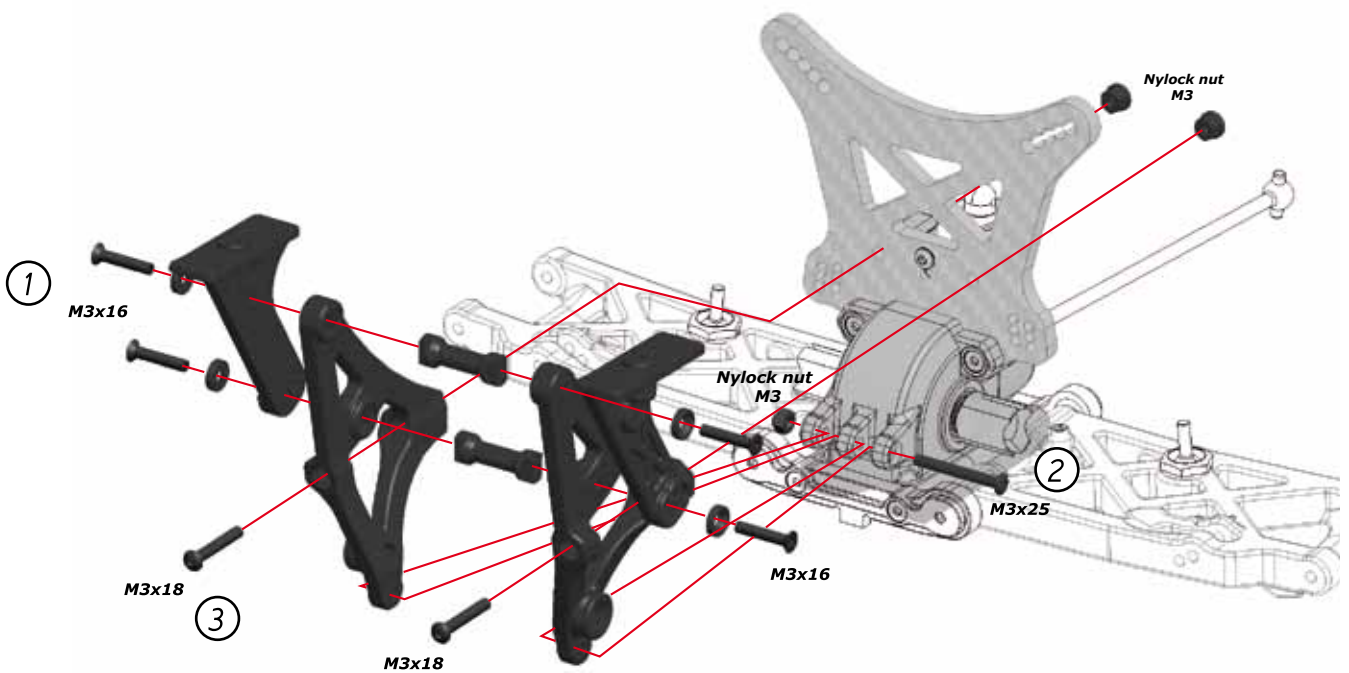
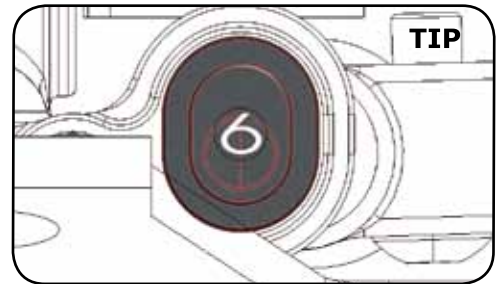




proper insert orientation in the rear bracket, left and right equal type

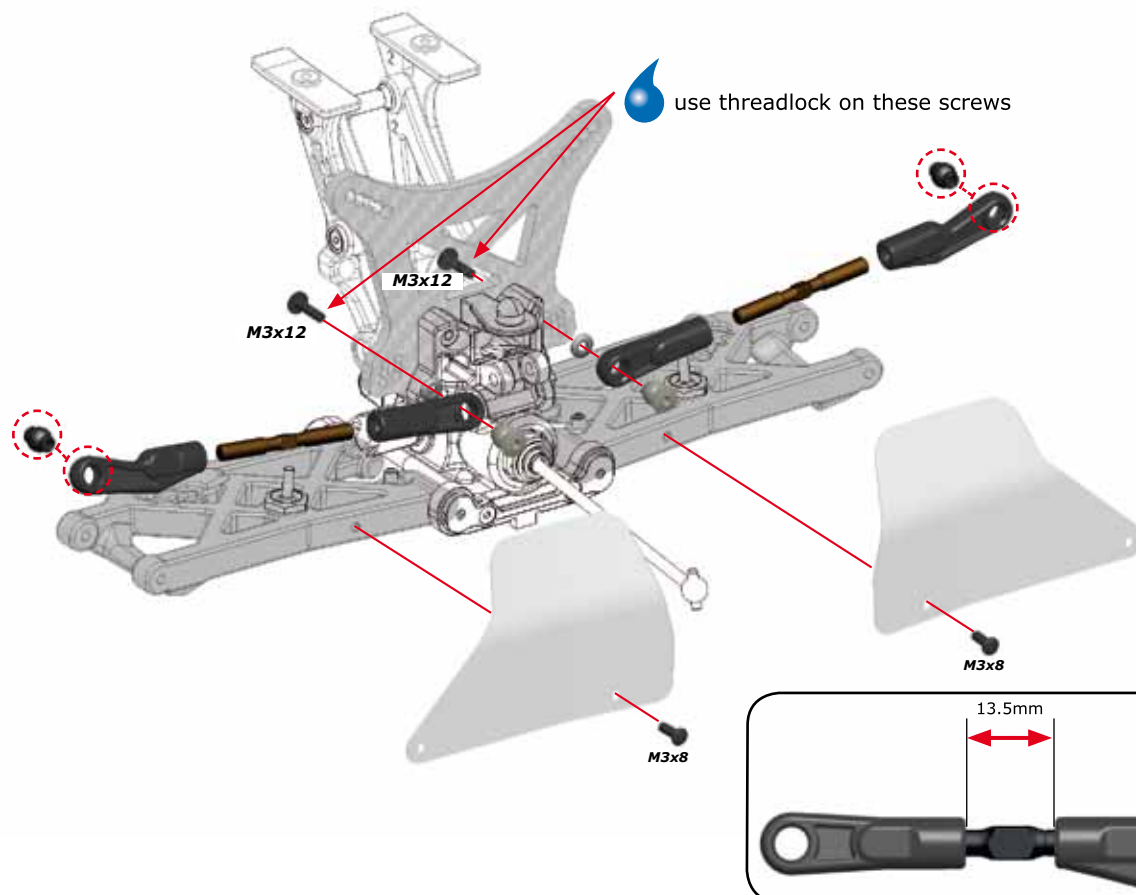


proper insert orientation in the front
bracket, left and right equal type

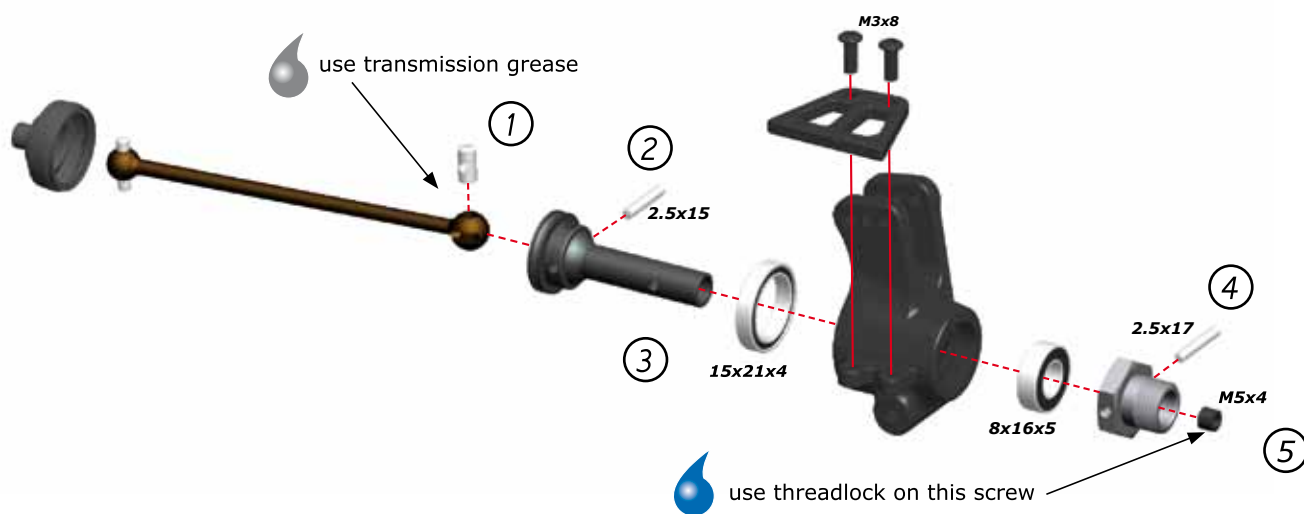


A

17

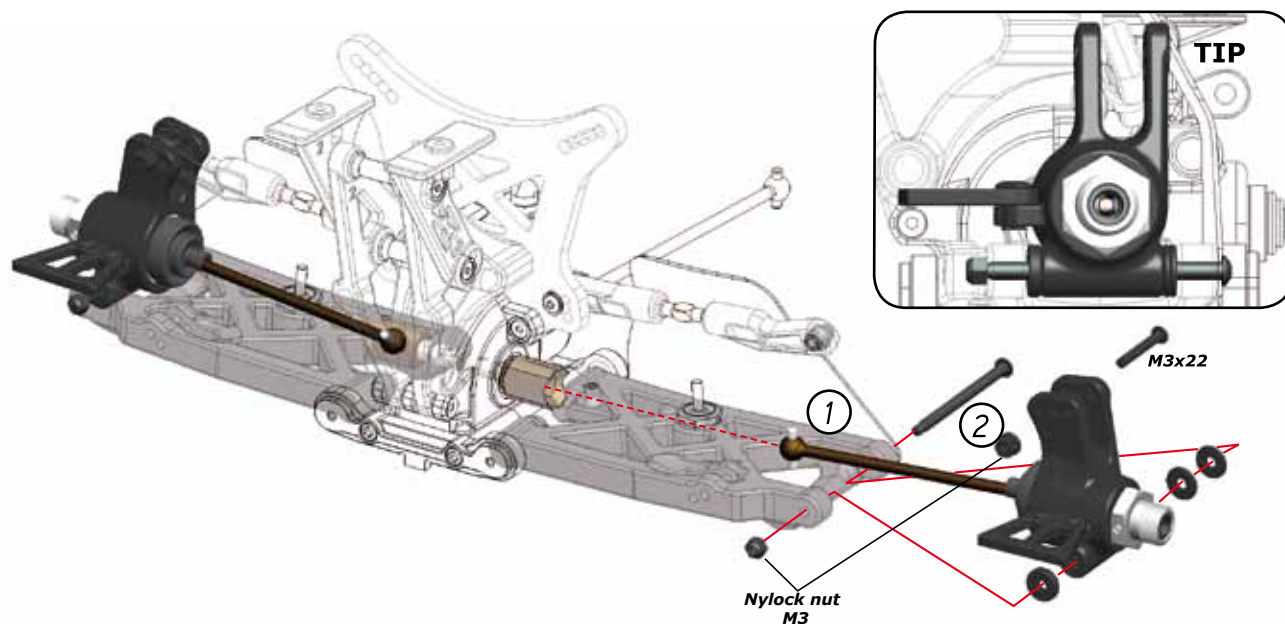


A

18A
BAG
4

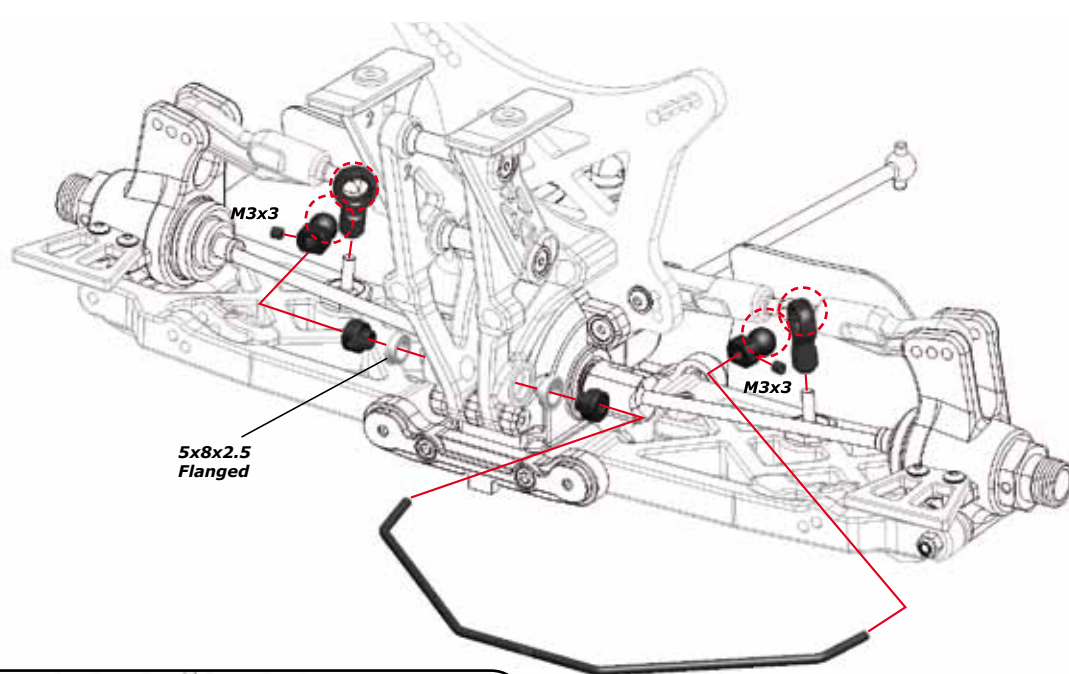
A

18B

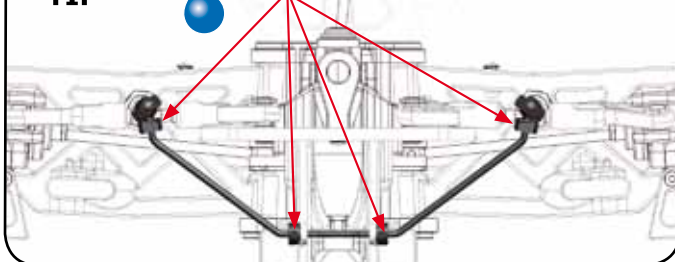


BIB 2.0

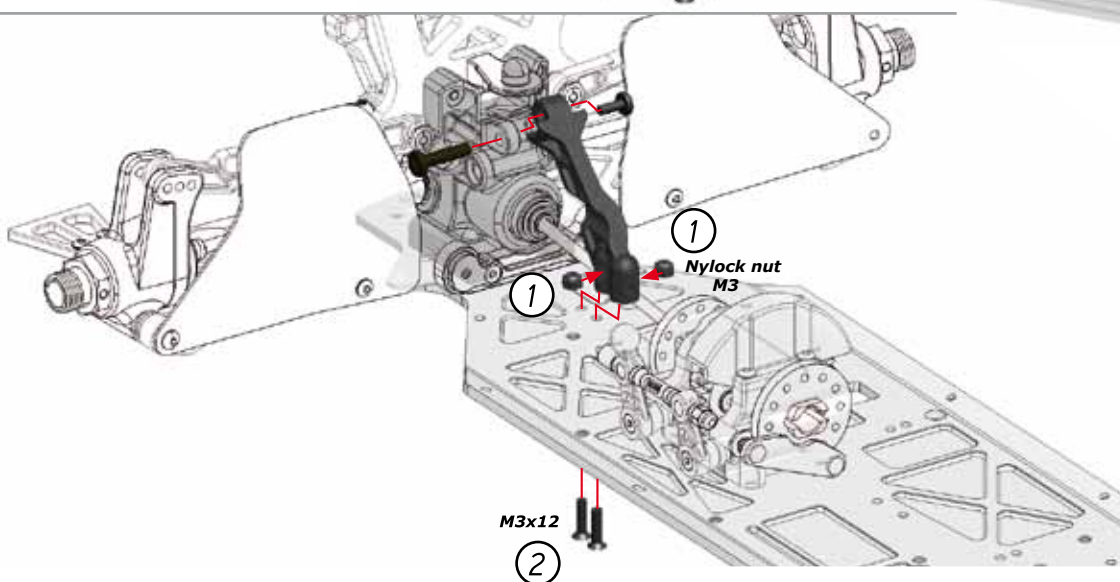
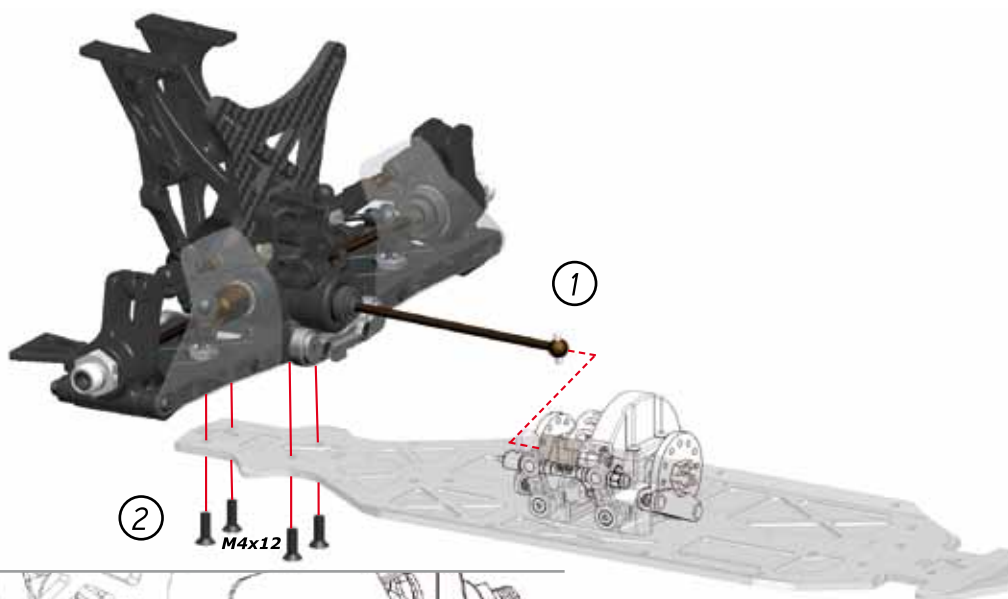
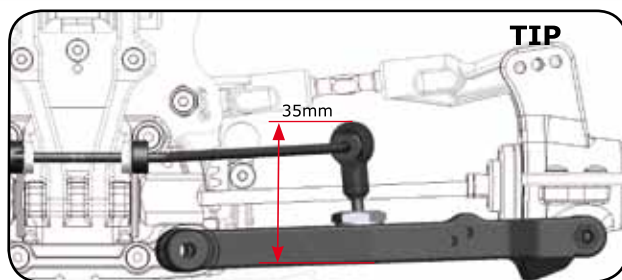
9

**TIP**

use threadlock on these screws

**TIP**

35mm

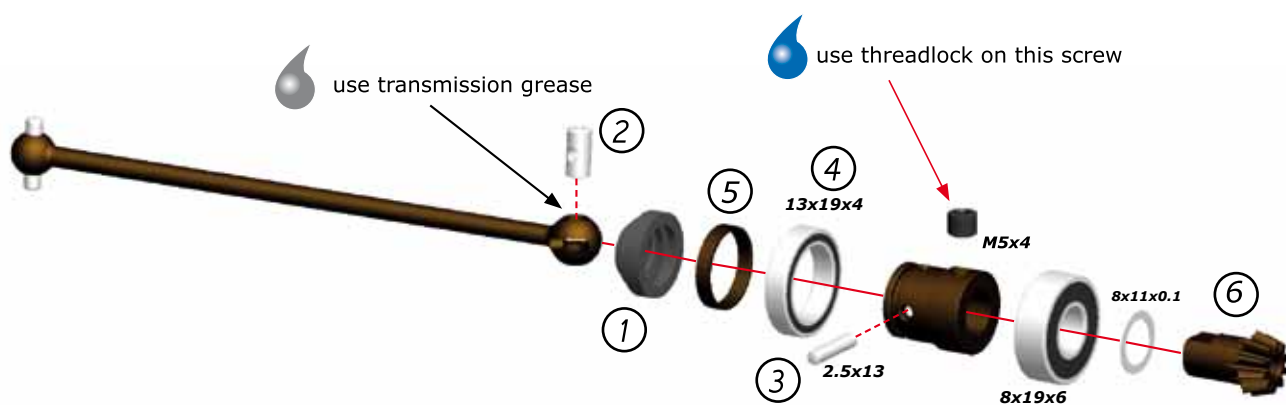


A

22

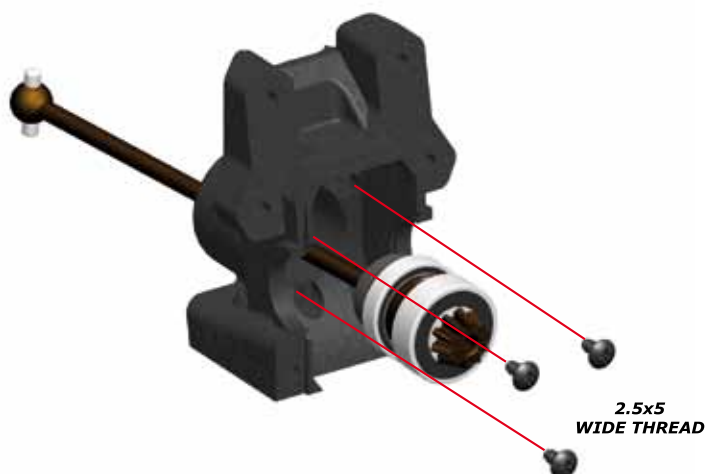
BAG

5



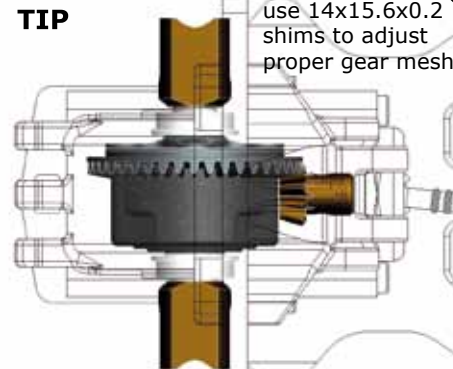
A

23



TIP

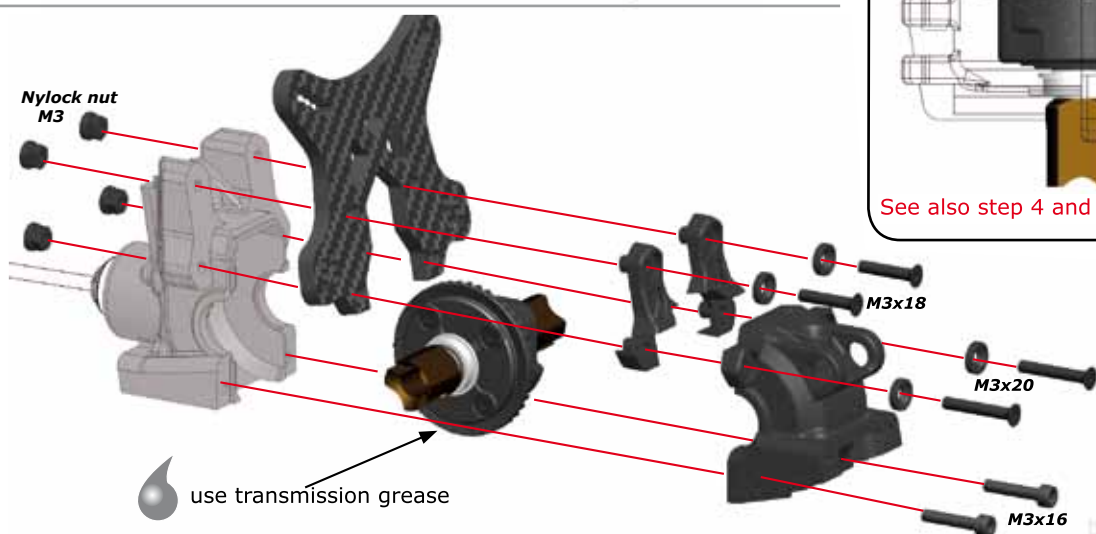
use 14x15.6x0.2
shims to adjust
proper gear mesh



See also step 4 and 5 to adjust gearmesh

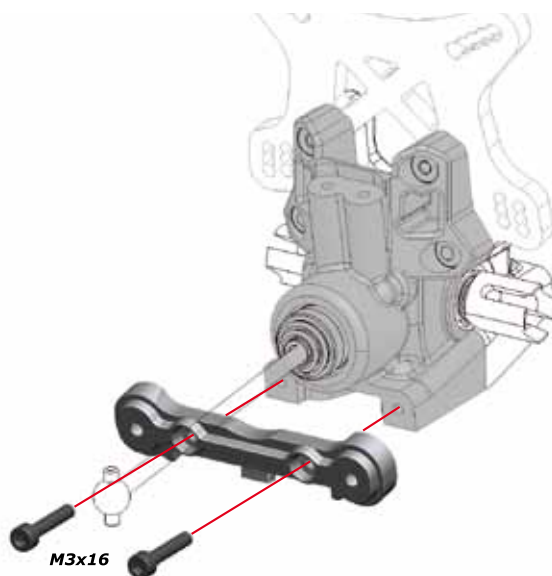
A

24



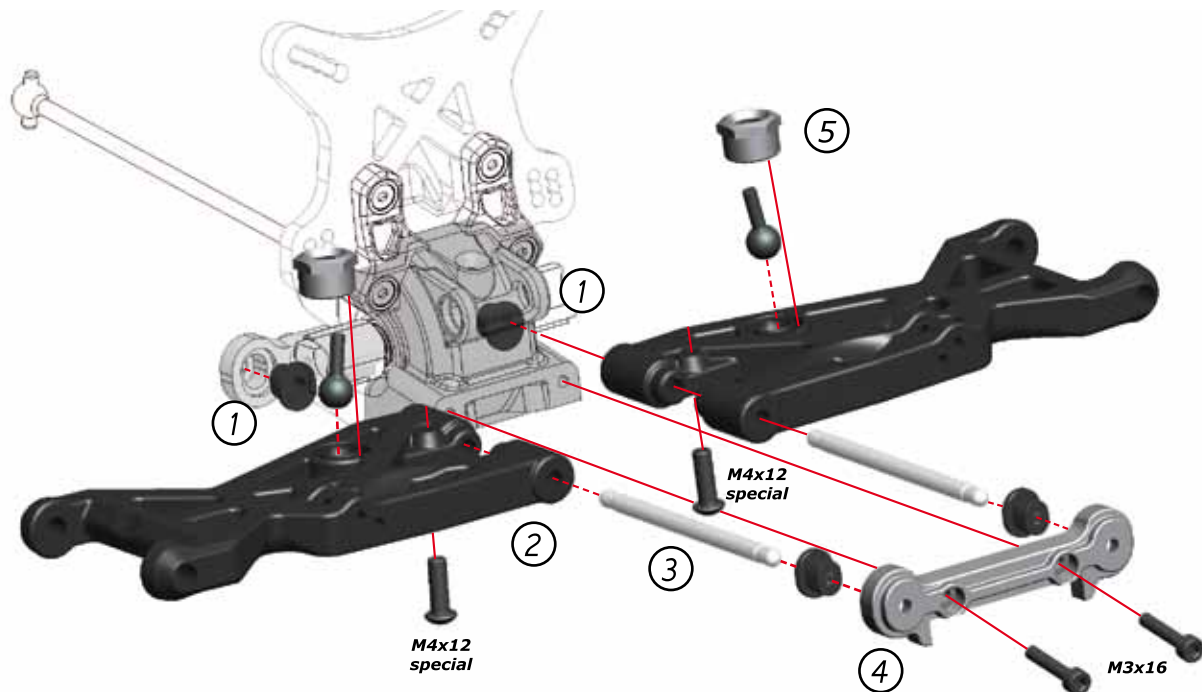
A

25

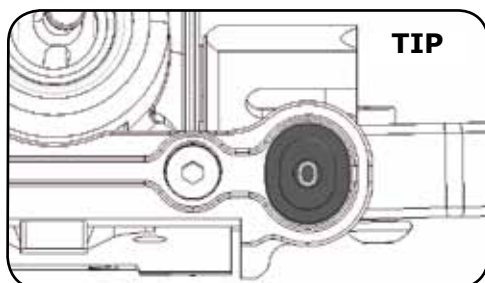


BLIP 2.0

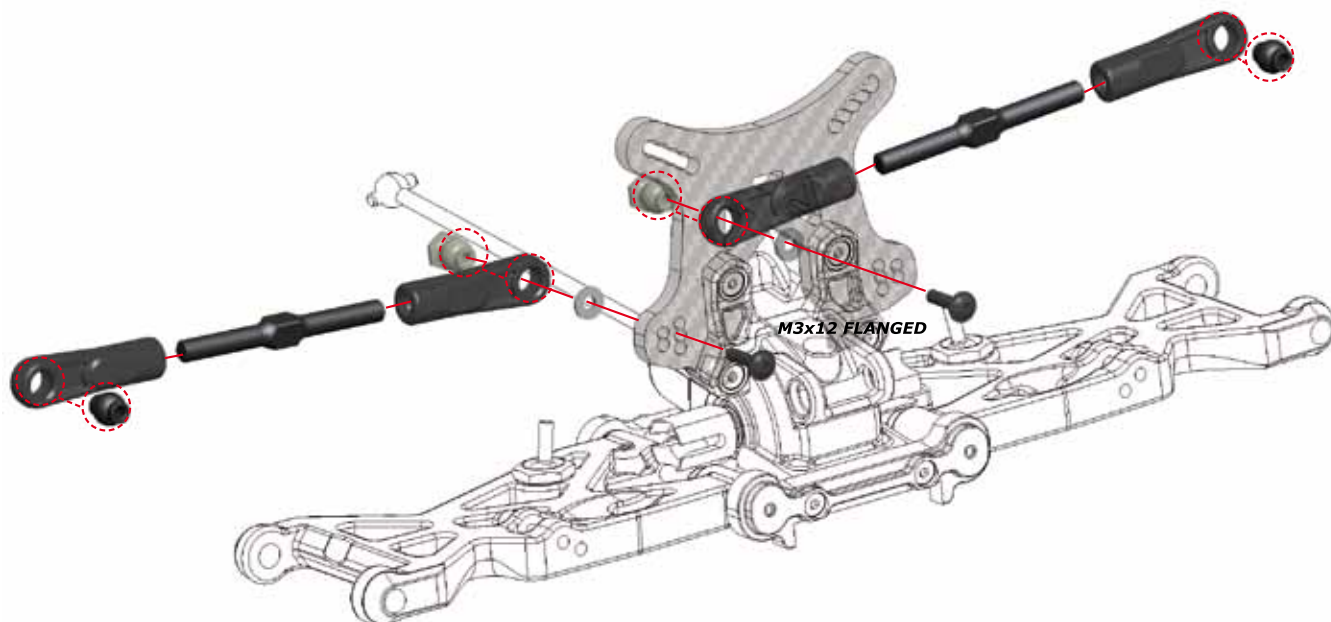
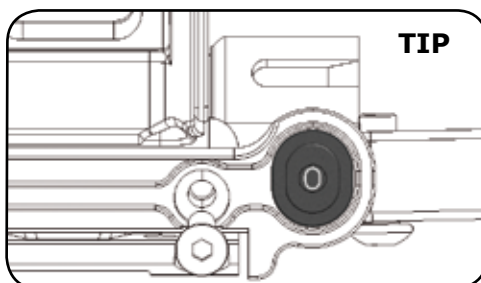
11



proper insert orientation
in the rear bracket



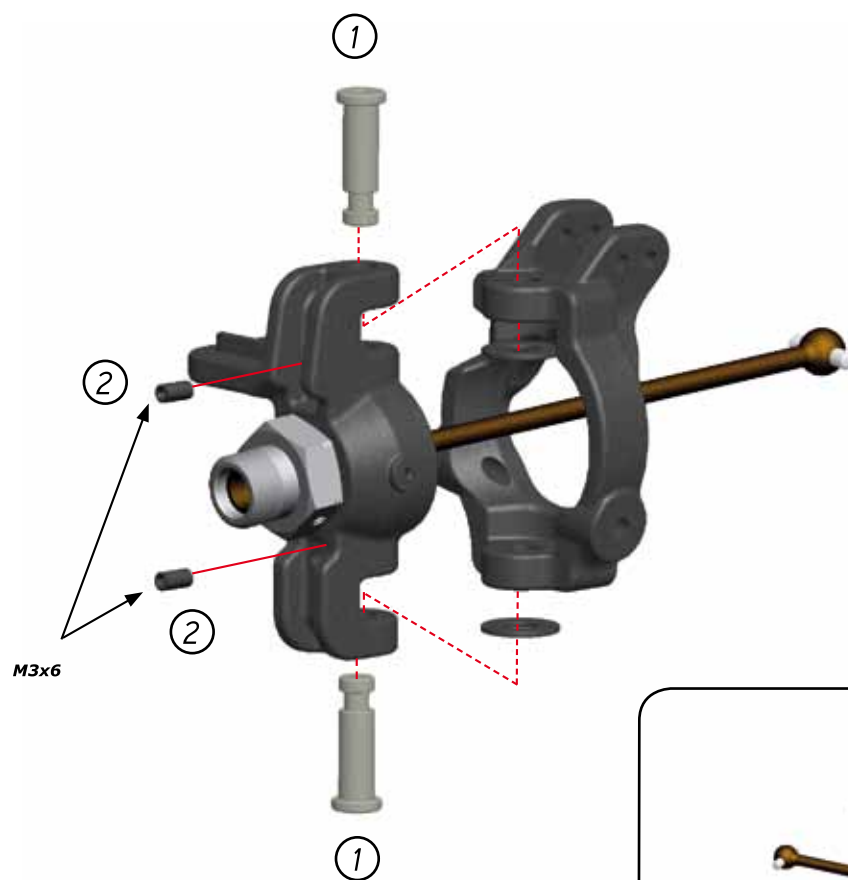
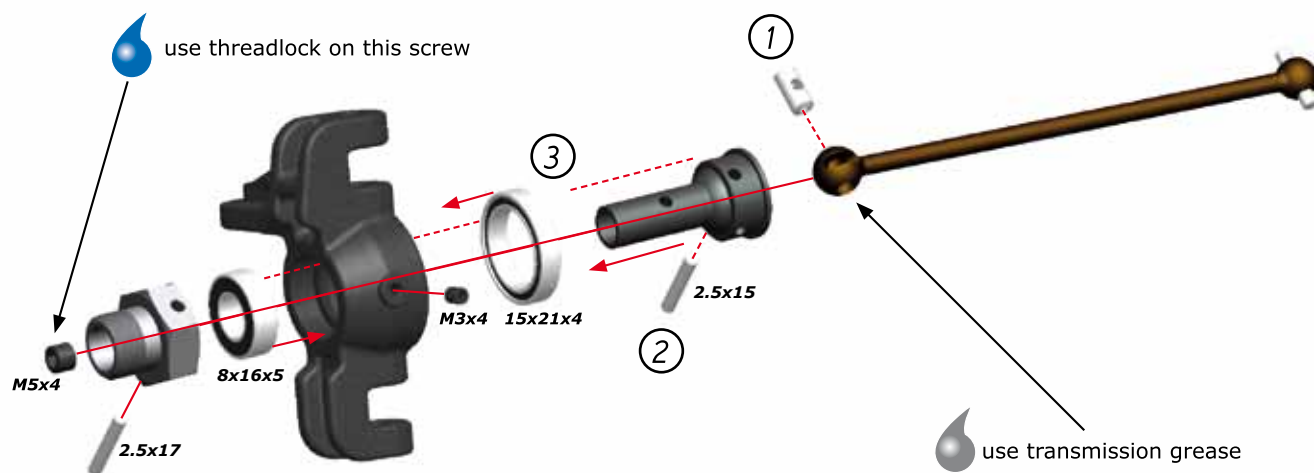
proper insert orientation
in the front bracket



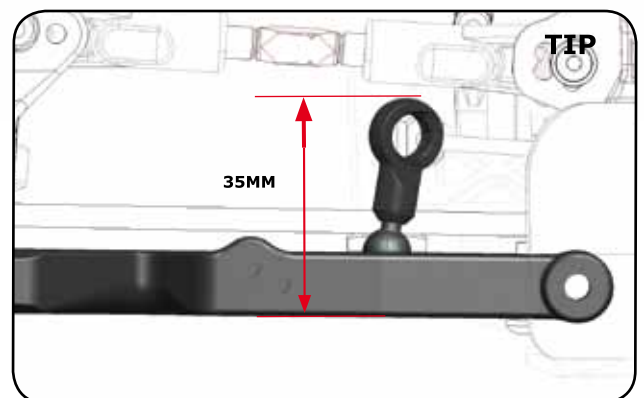
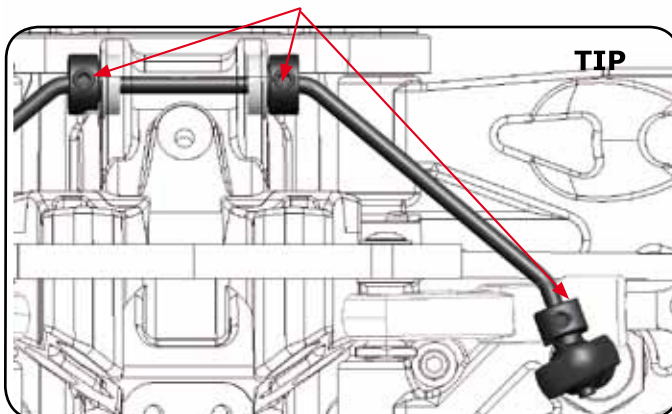
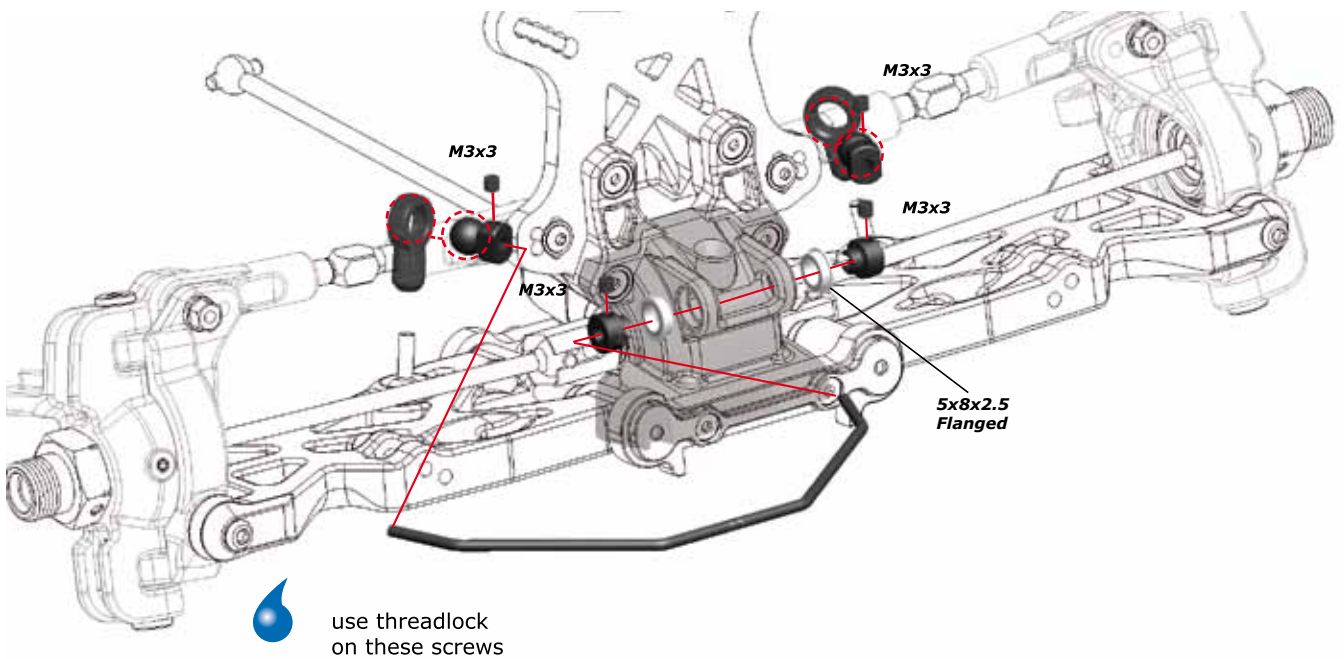
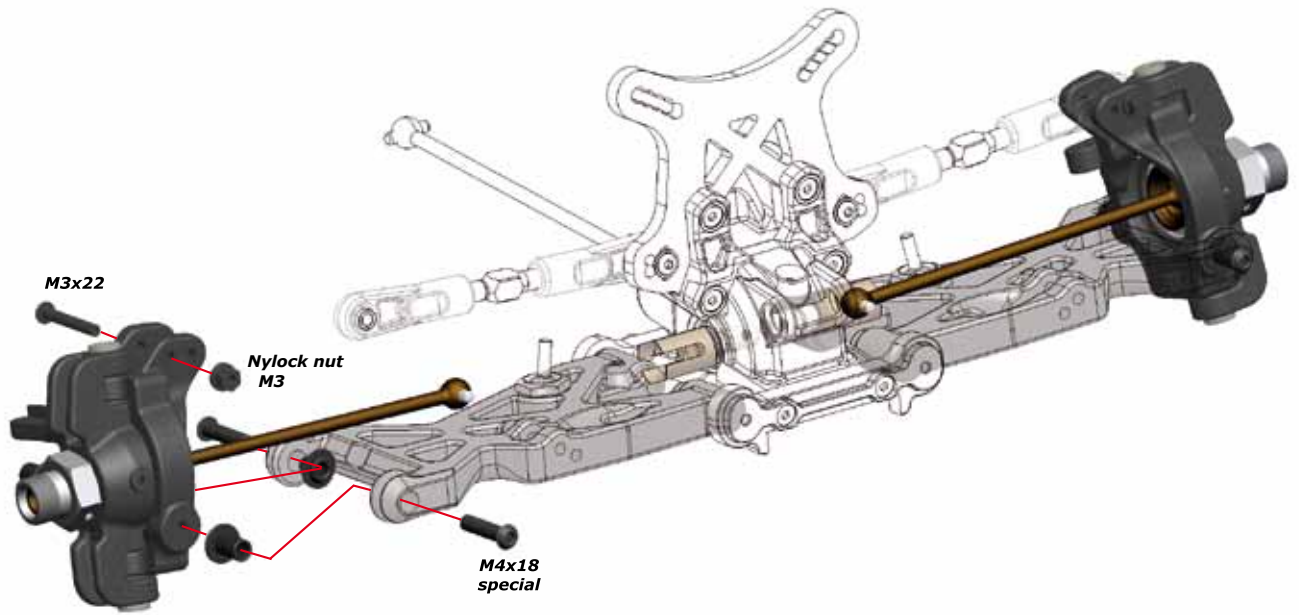
18.0MM

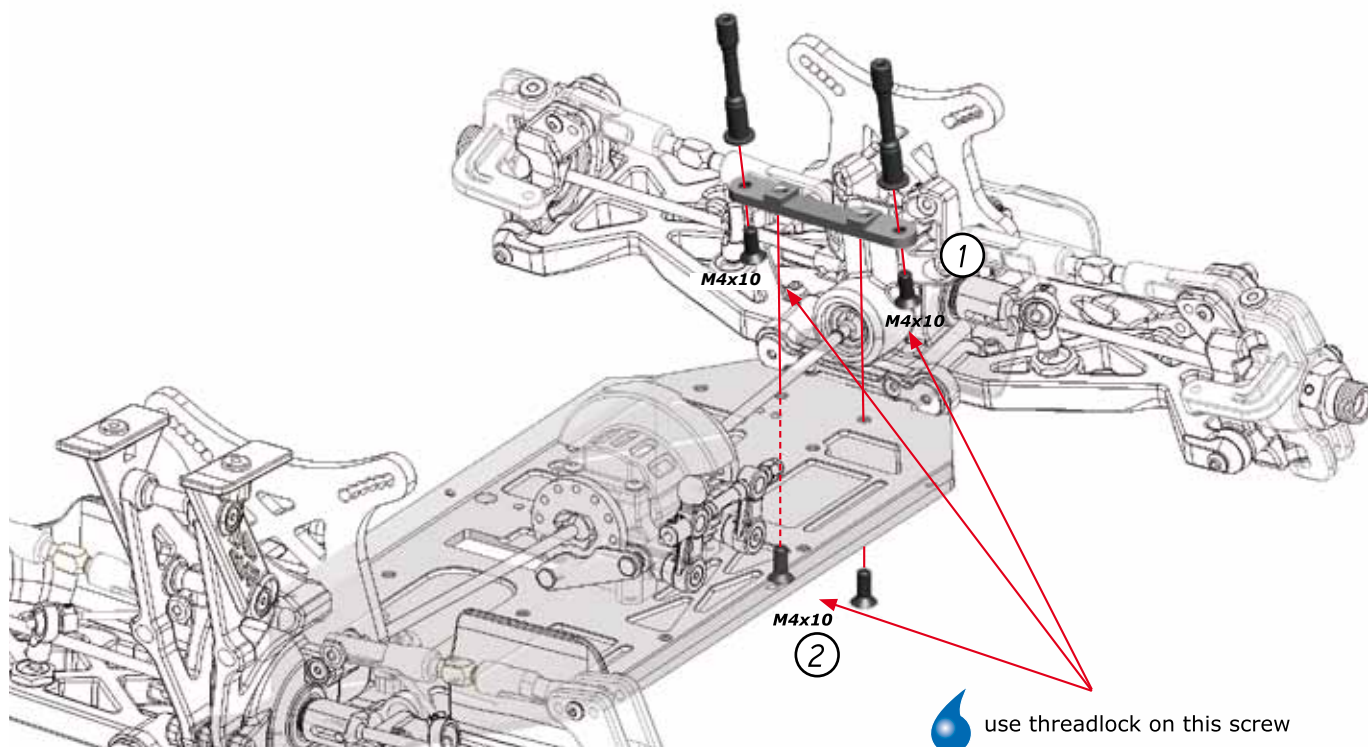
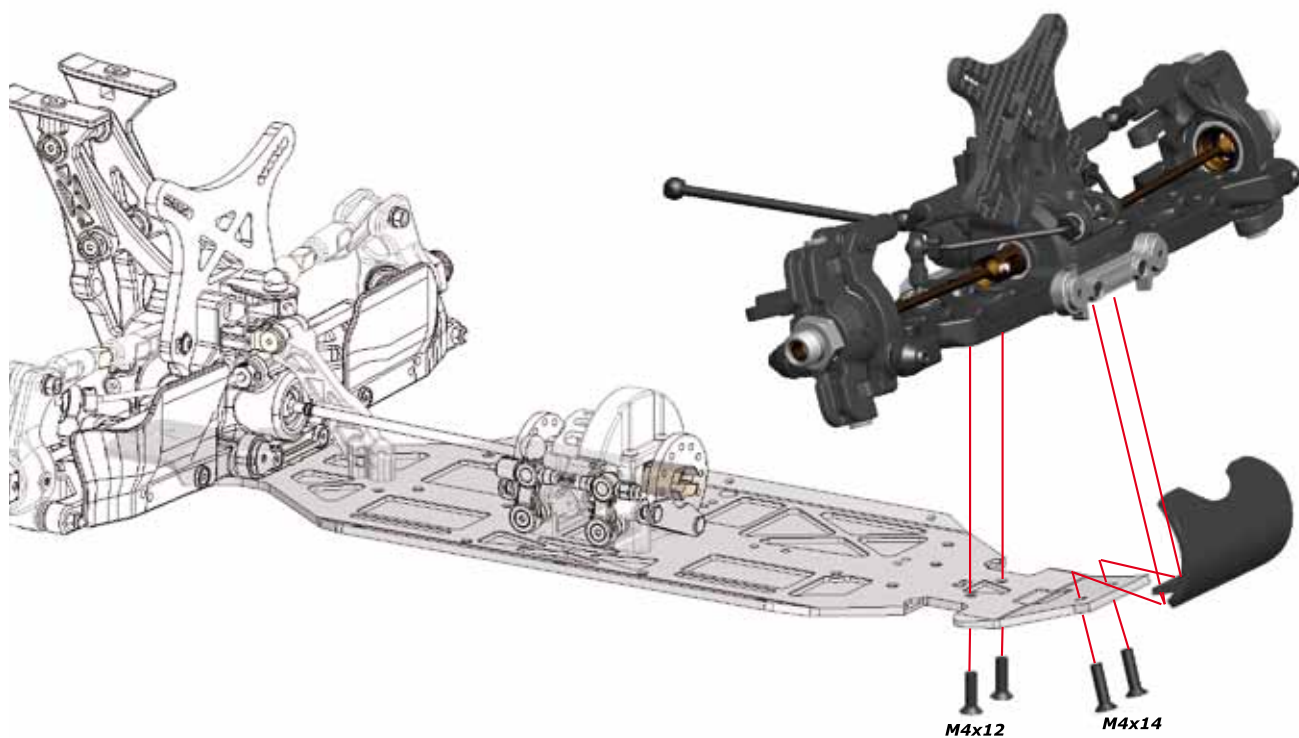
TIP



**TIP**

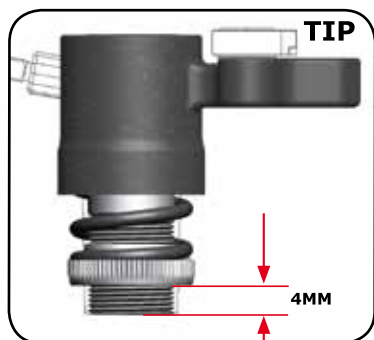
Left hand side





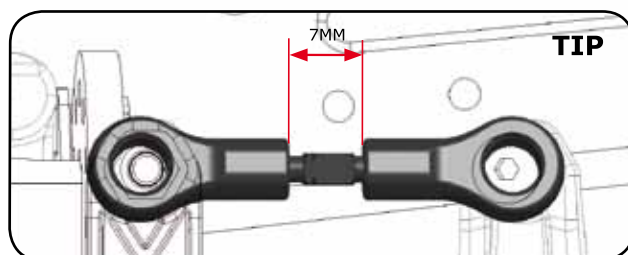
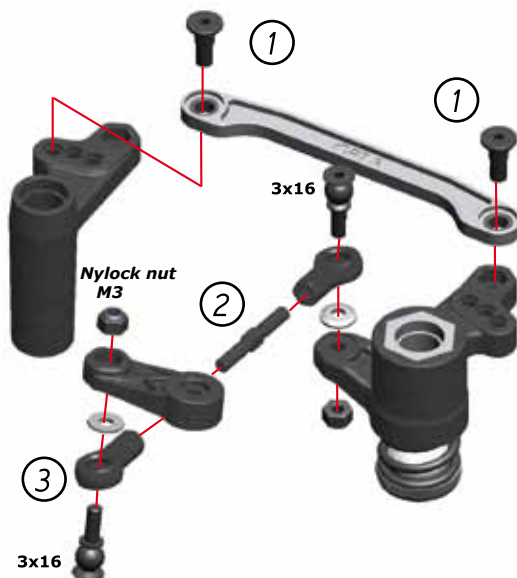
A

34



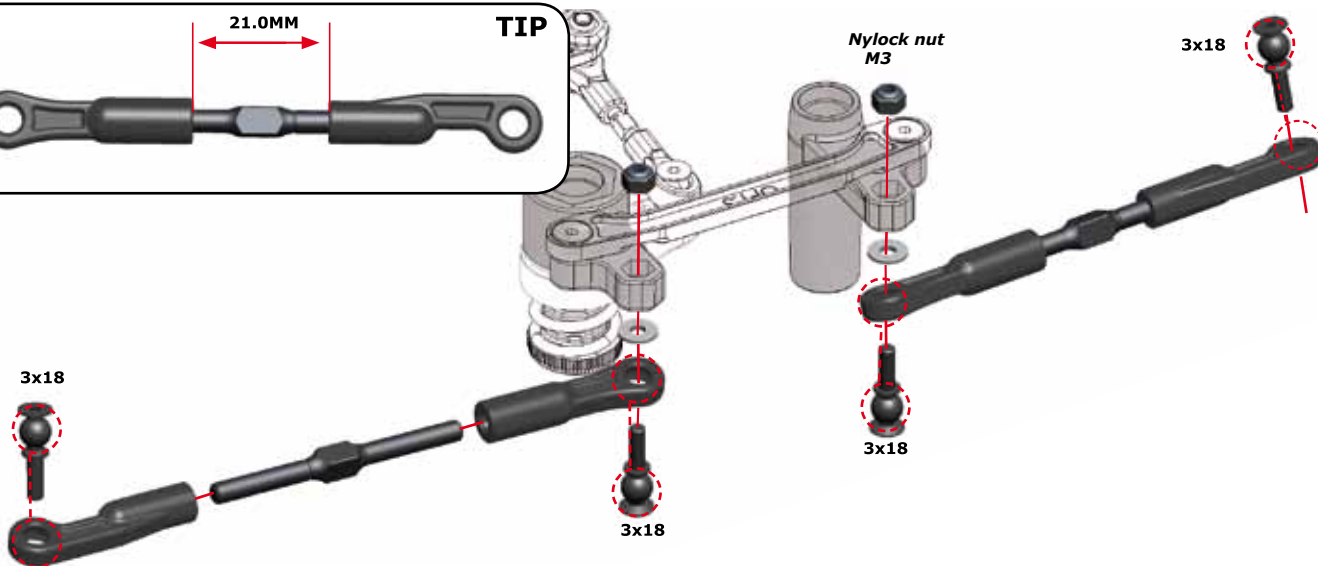
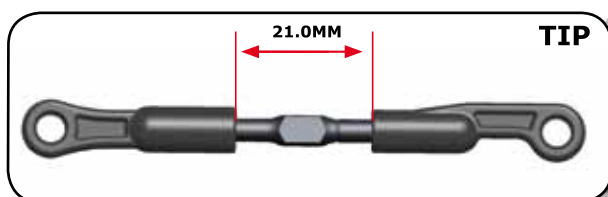
A

35



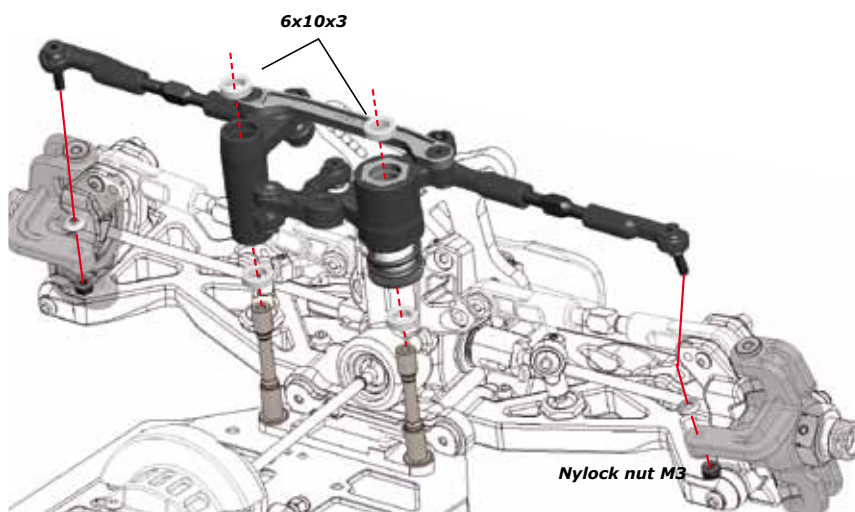
A

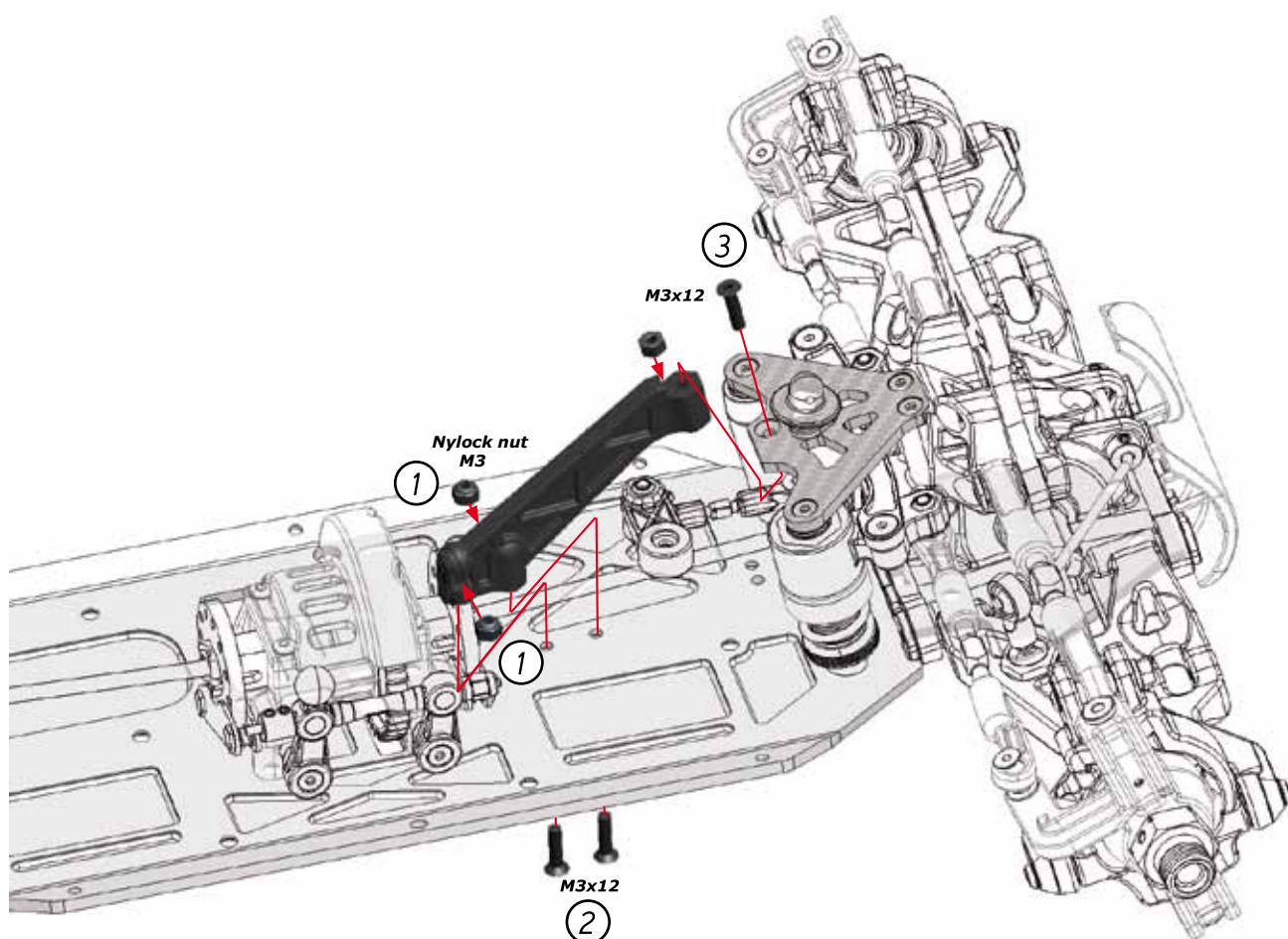
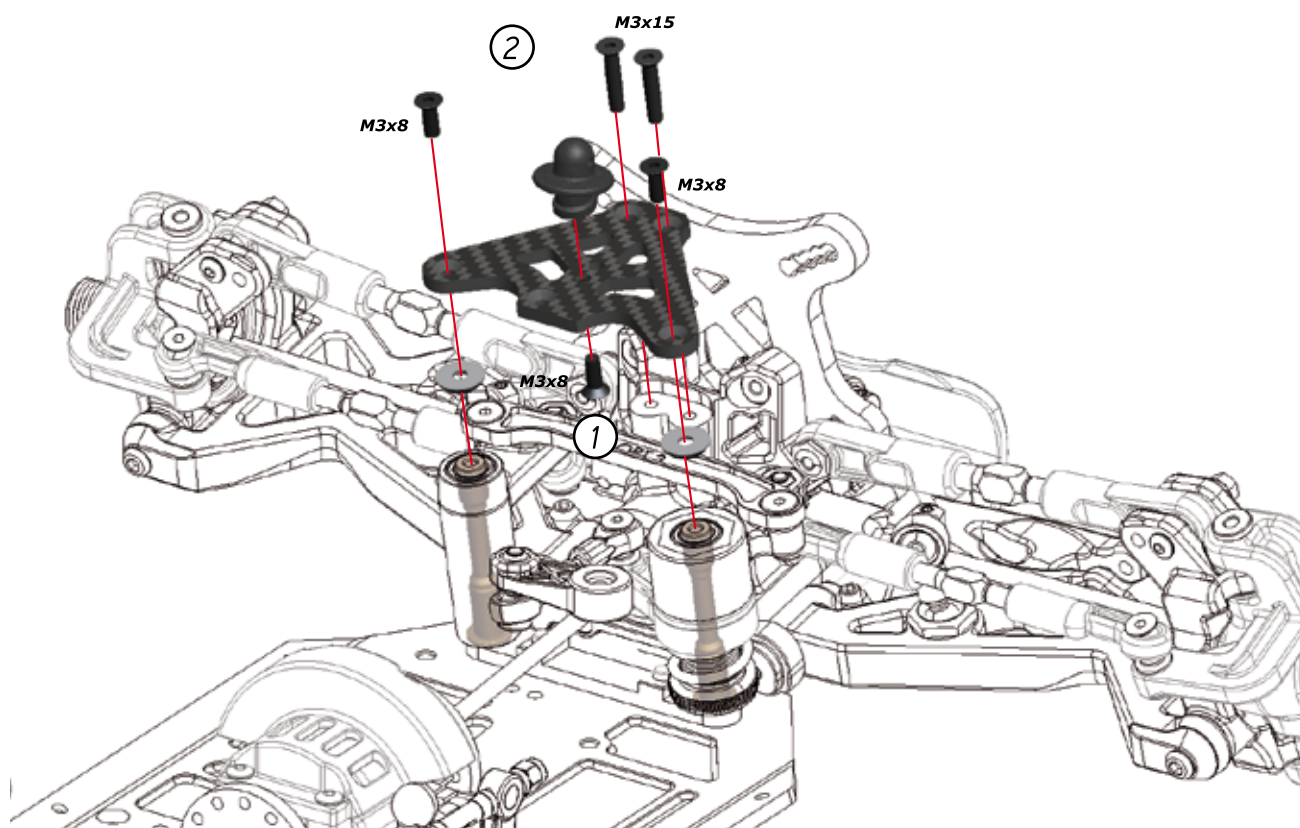
36

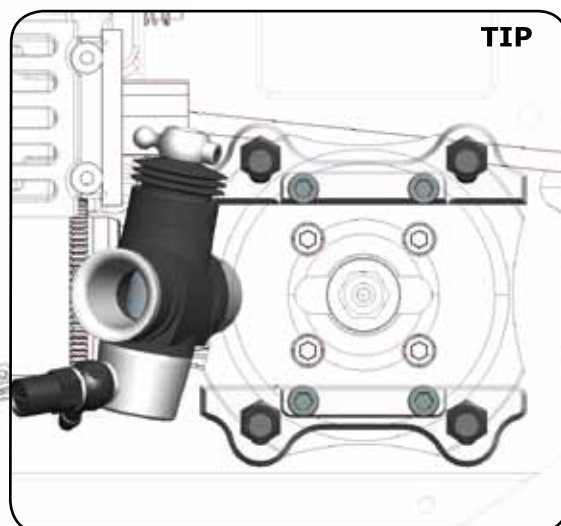
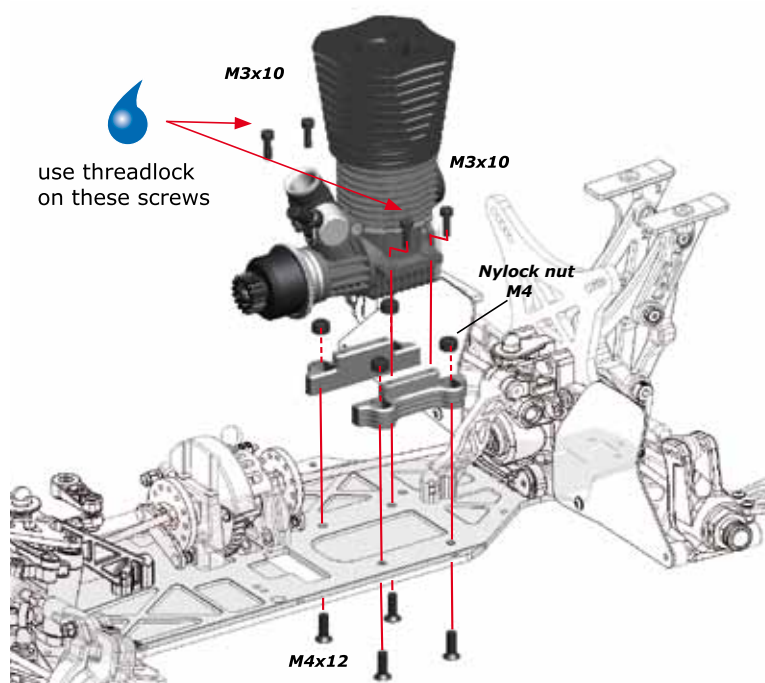
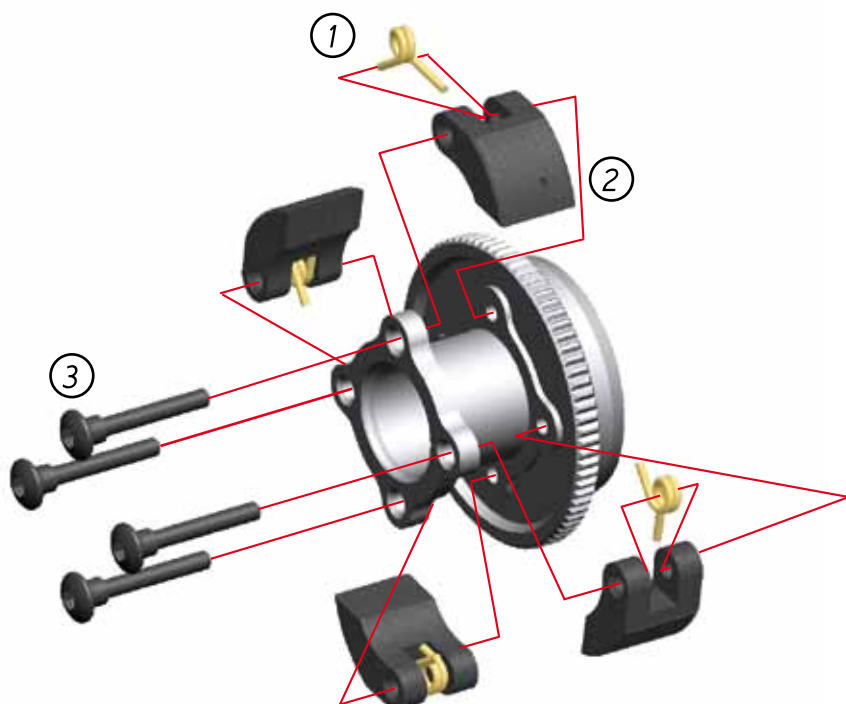


A

37







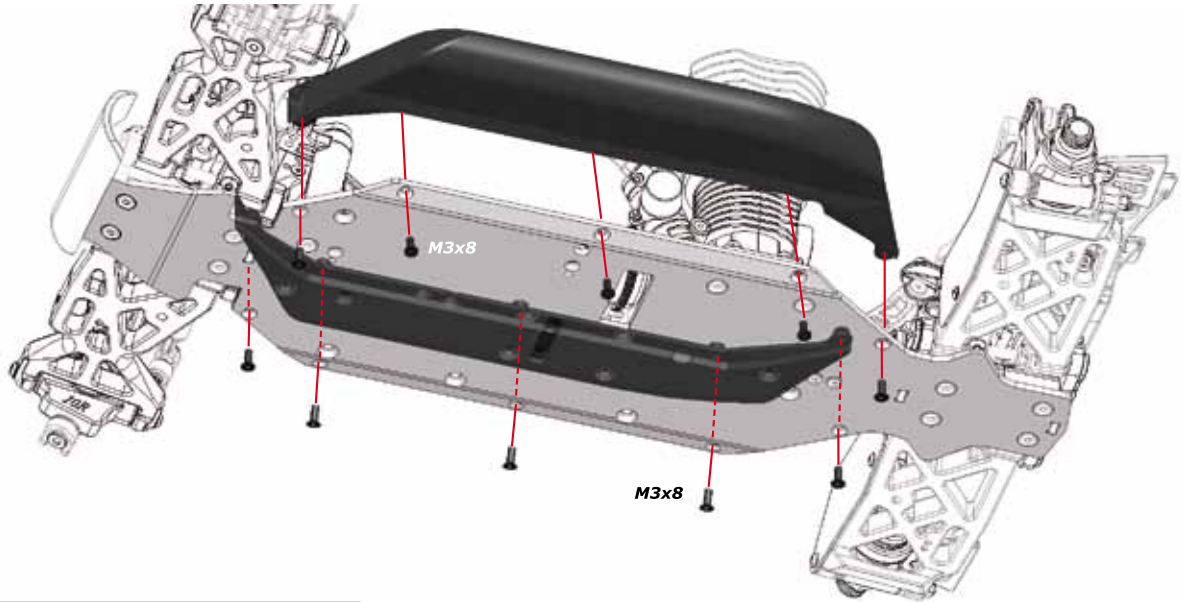
SIDE-GUARD / RADIO ASSEMBLY

C

1

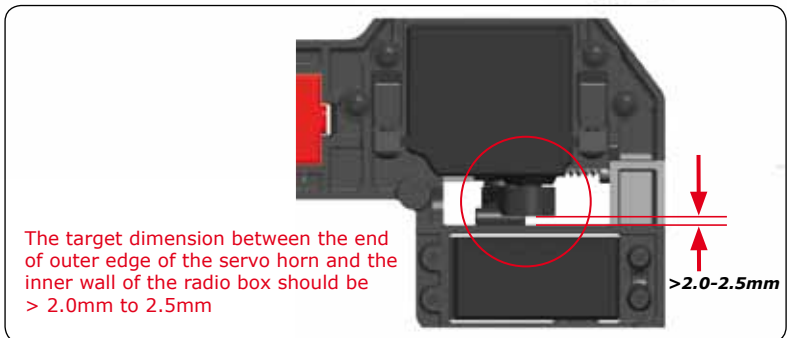
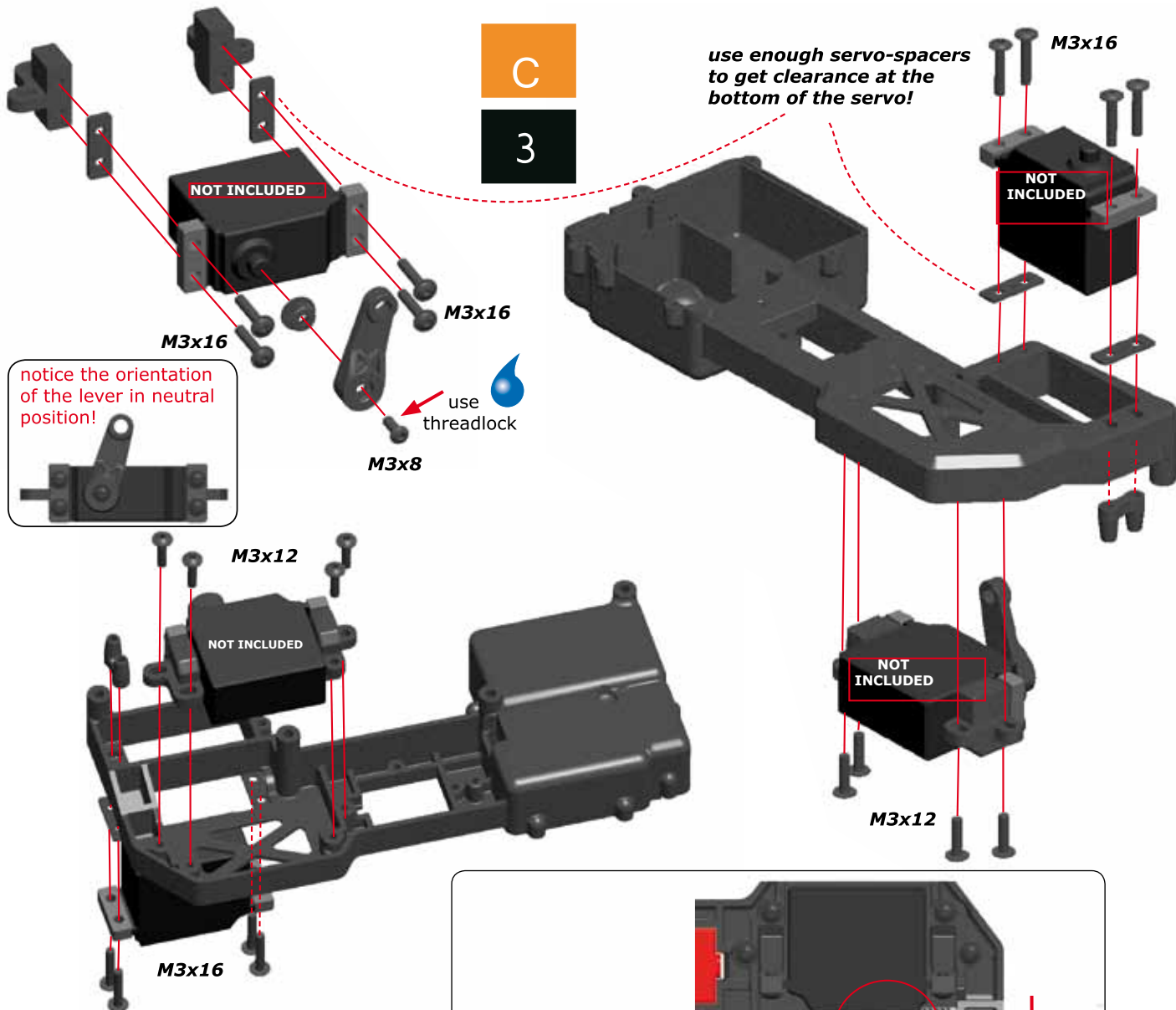
BAG

9



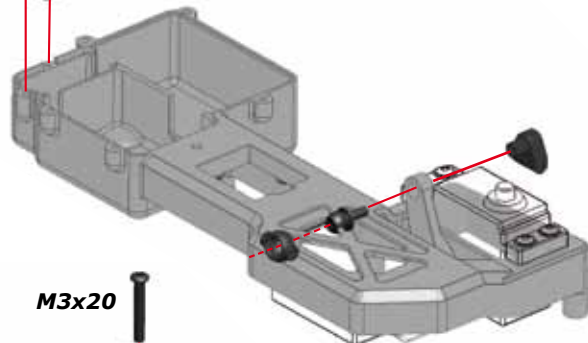
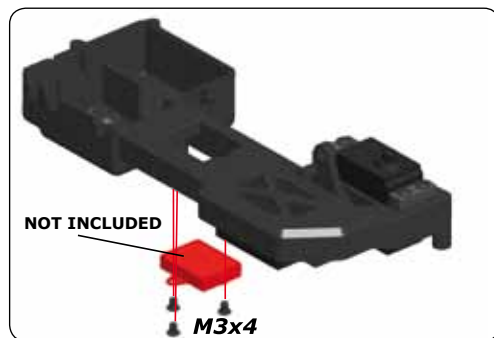
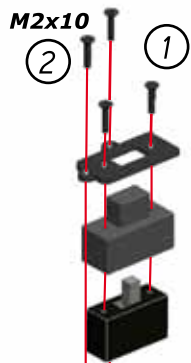
C

2



C

4

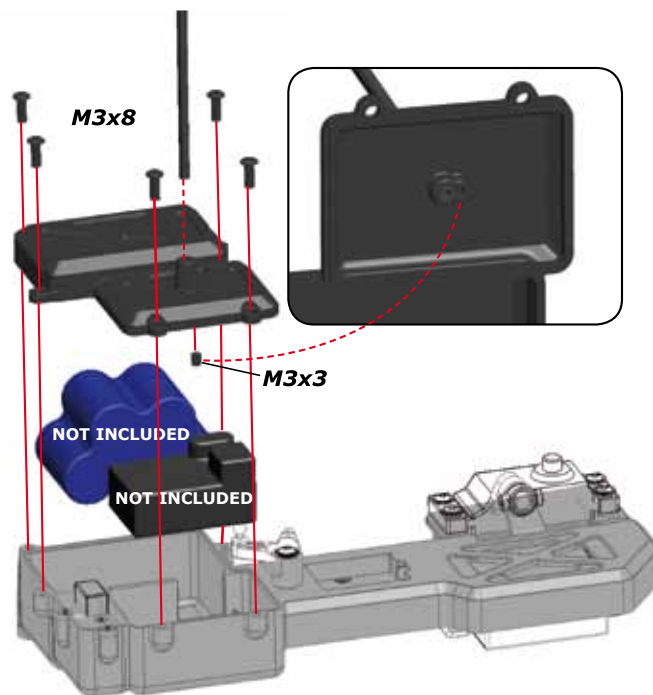


C

5

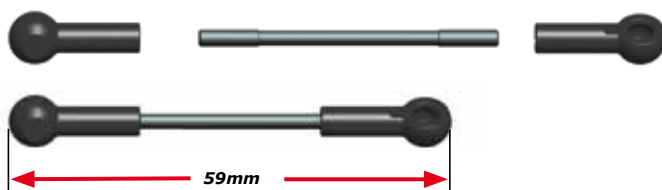
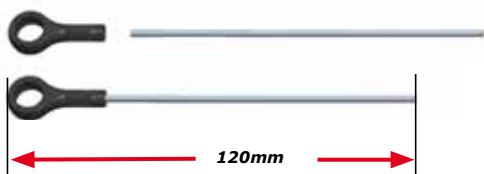
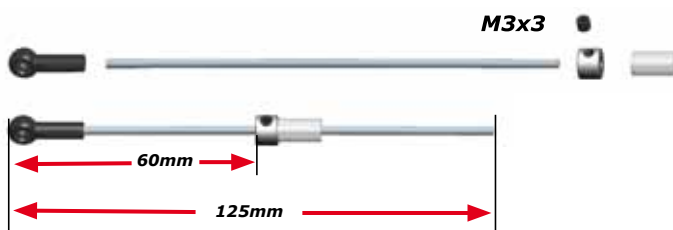
C

6



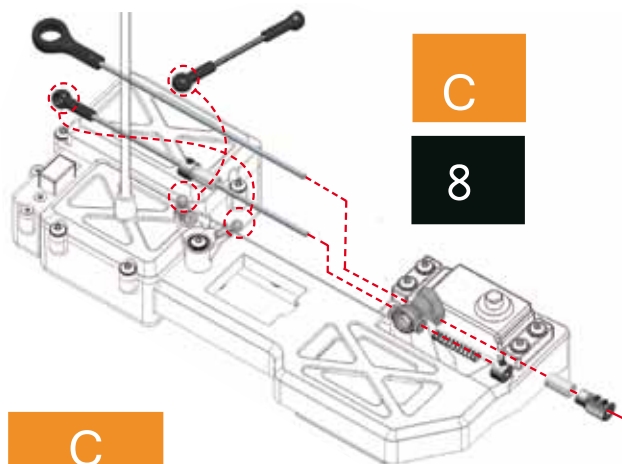
C

7



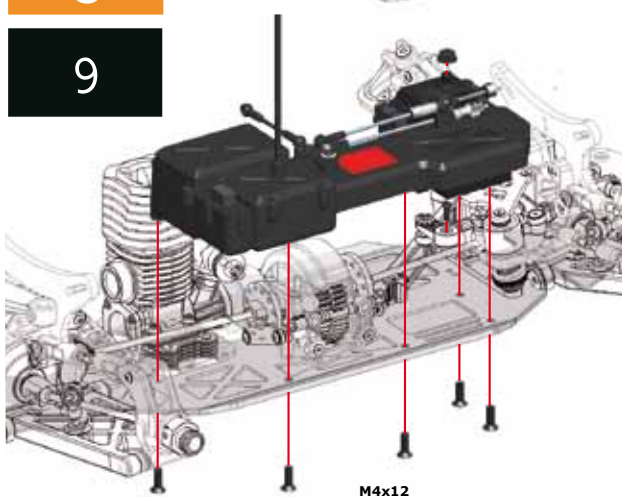
C

8



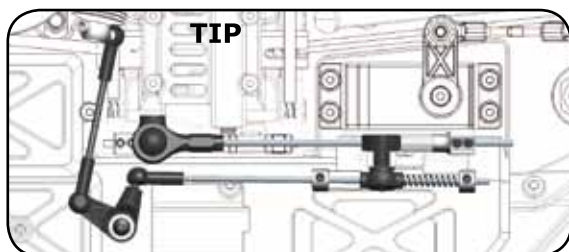
C

9



B11E2.0

20



FRONT/REAR SHOCK ASSEMBLY

D

1

**BAG
10/11**

D

2

D

3

D

4

D

5

D

6

D

7

D

8

Close fully

D

9

NOTE:
Bag 10 are
FRONT shocks.
Bag 11 are
REAR shocks

use threadlock

M2.5x6

Apply silicone oil to
assemble the o-rings

Apply silicone oil to
assemble the shockshaft

Apply silicone oil to
mount the nut

REAR
shock
123mm

FRONT
shock
97mm

TIP

Push membrane
into the shock top

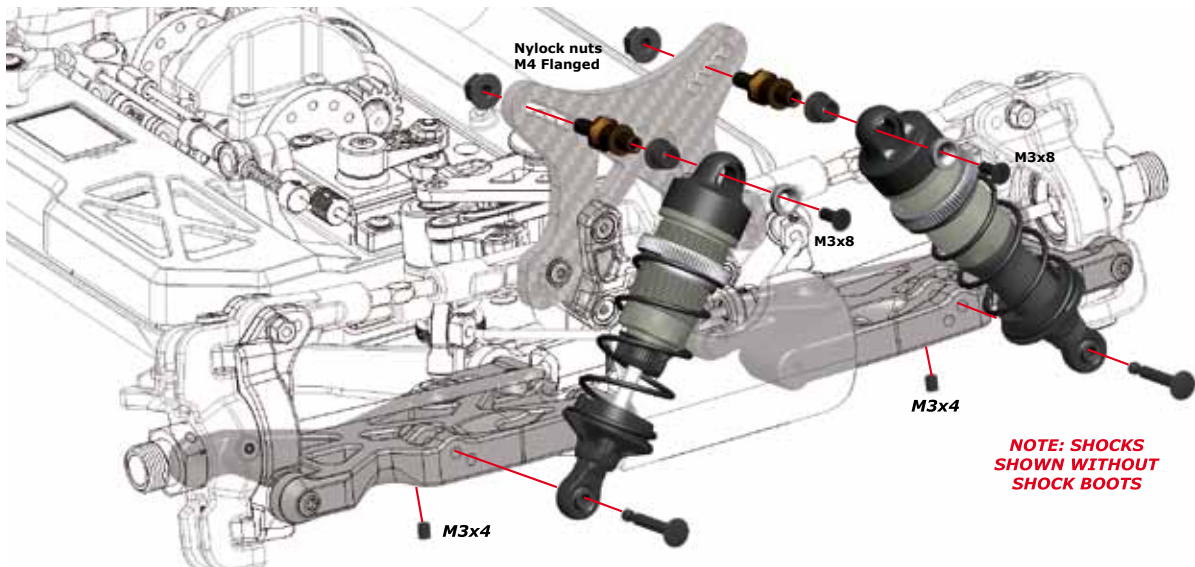
- Fill up with silicone oil
- Wait for air bubbles to escape
- Close top only 3/4
- Check default SET-UP sheet for CST value of silicone oil

Push all
the way in

SCHOCK MOUNTING

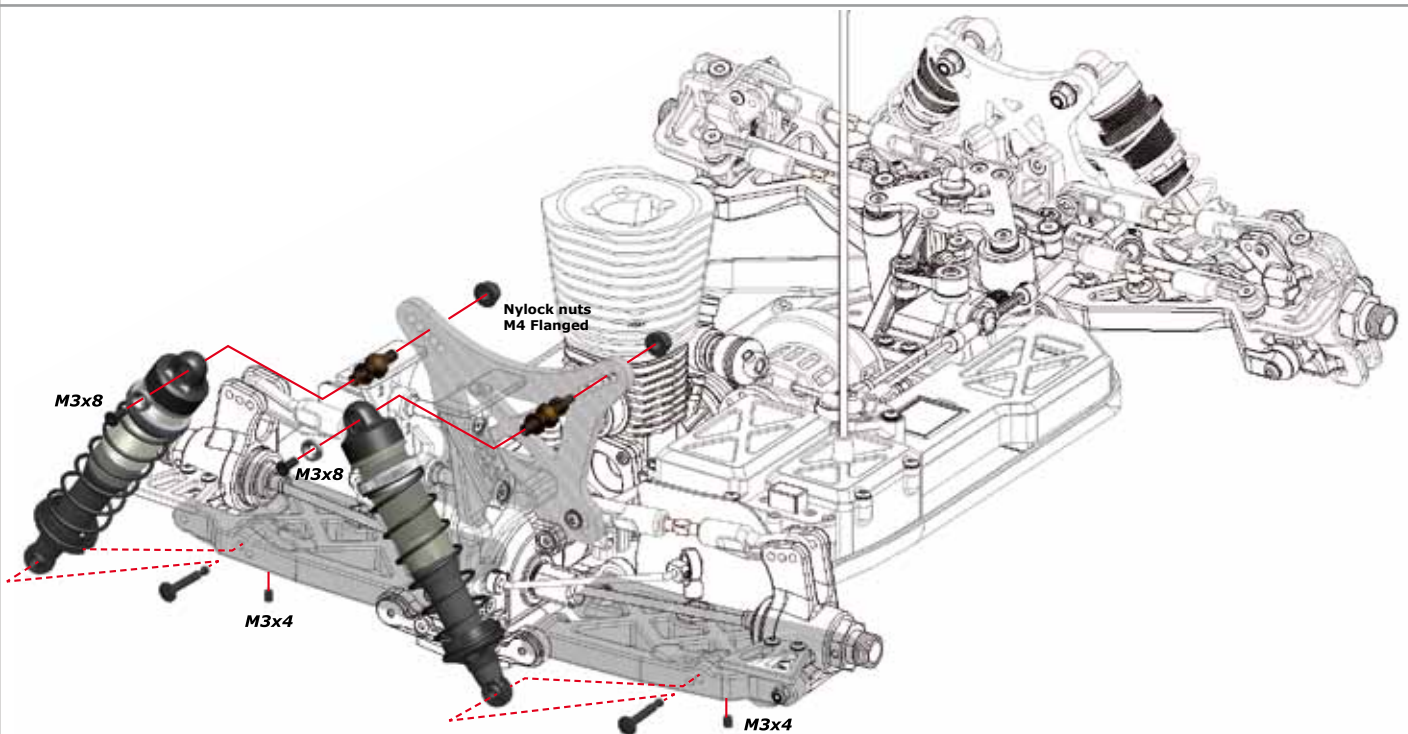
D

10



D

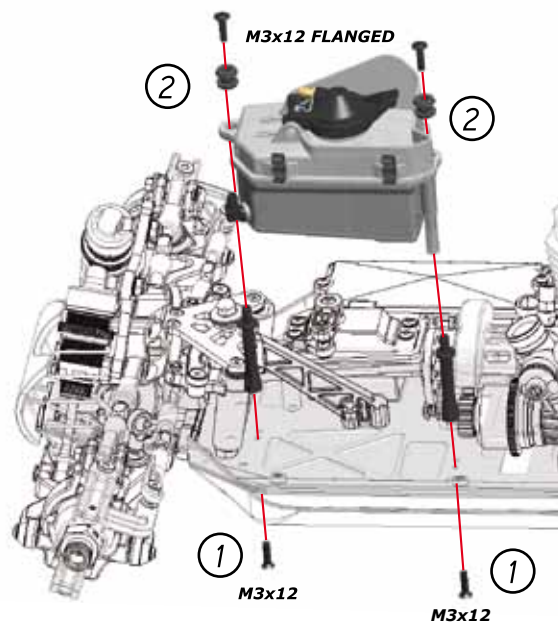
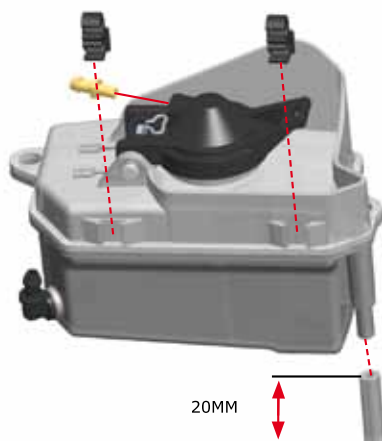
11



D

12

BAG
12



NOTE: POSITION OF TANK POSTS

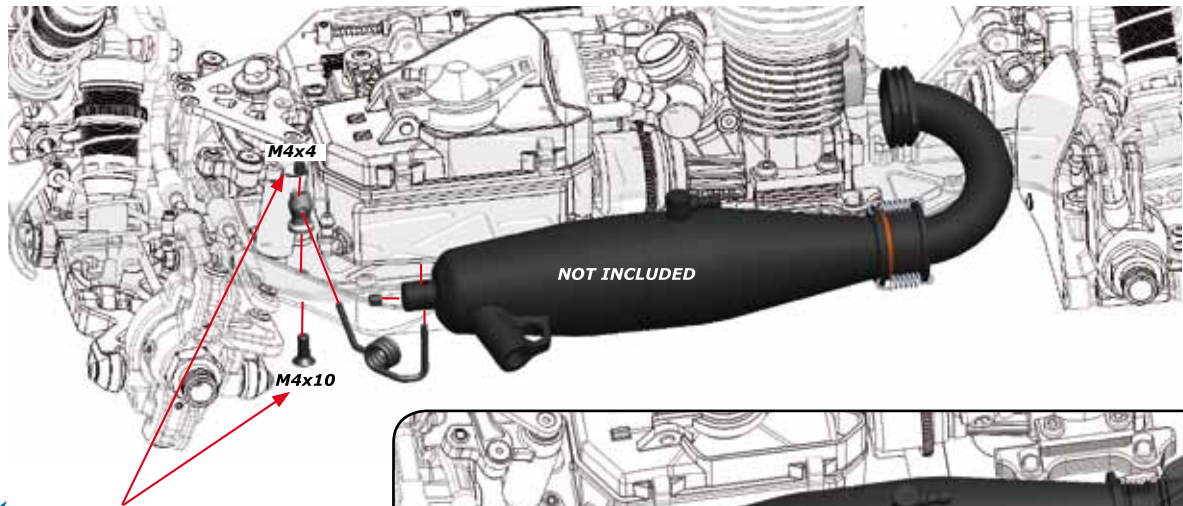
22

B11E2.0

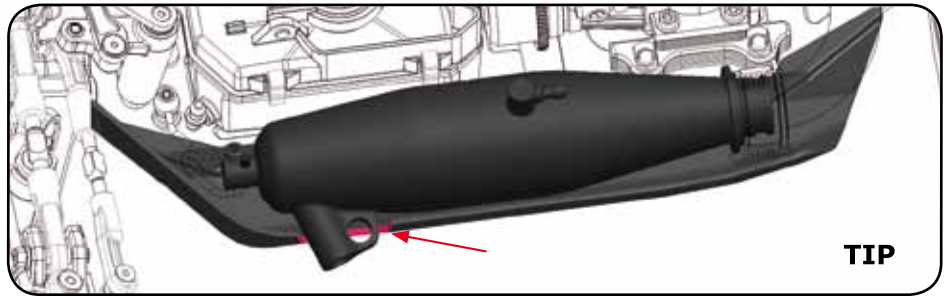
FINAL ASSEMBLY

E

1



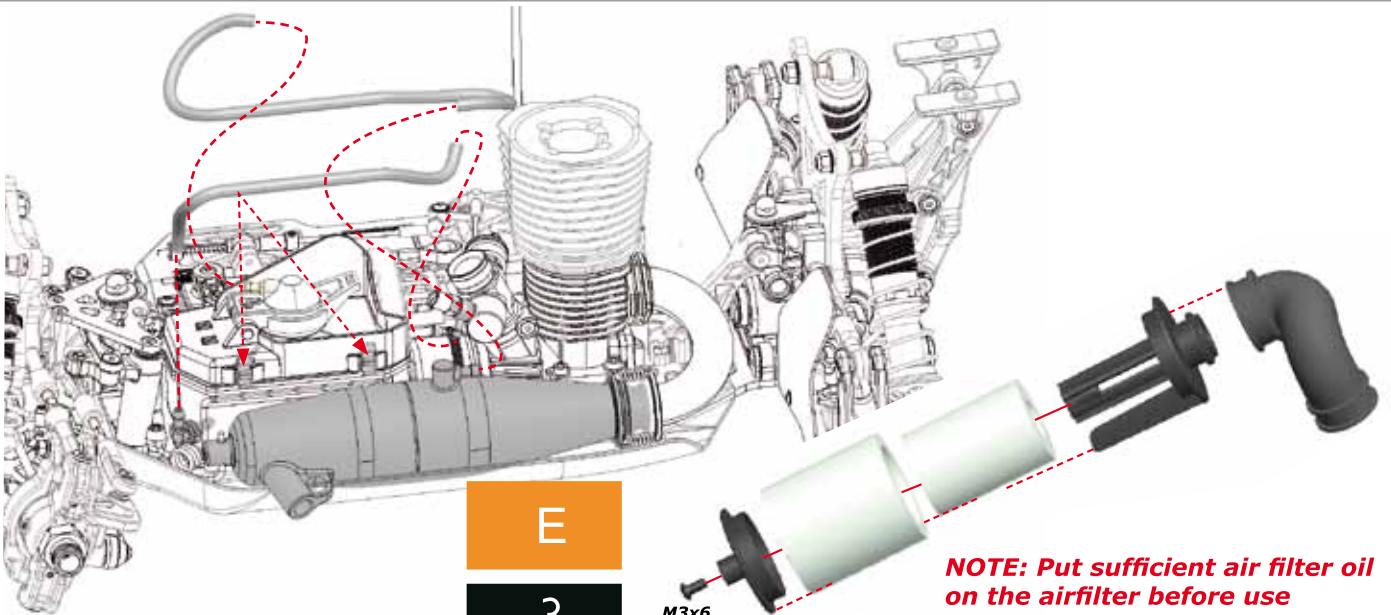
use threadlock on these screws



TIP

E

2



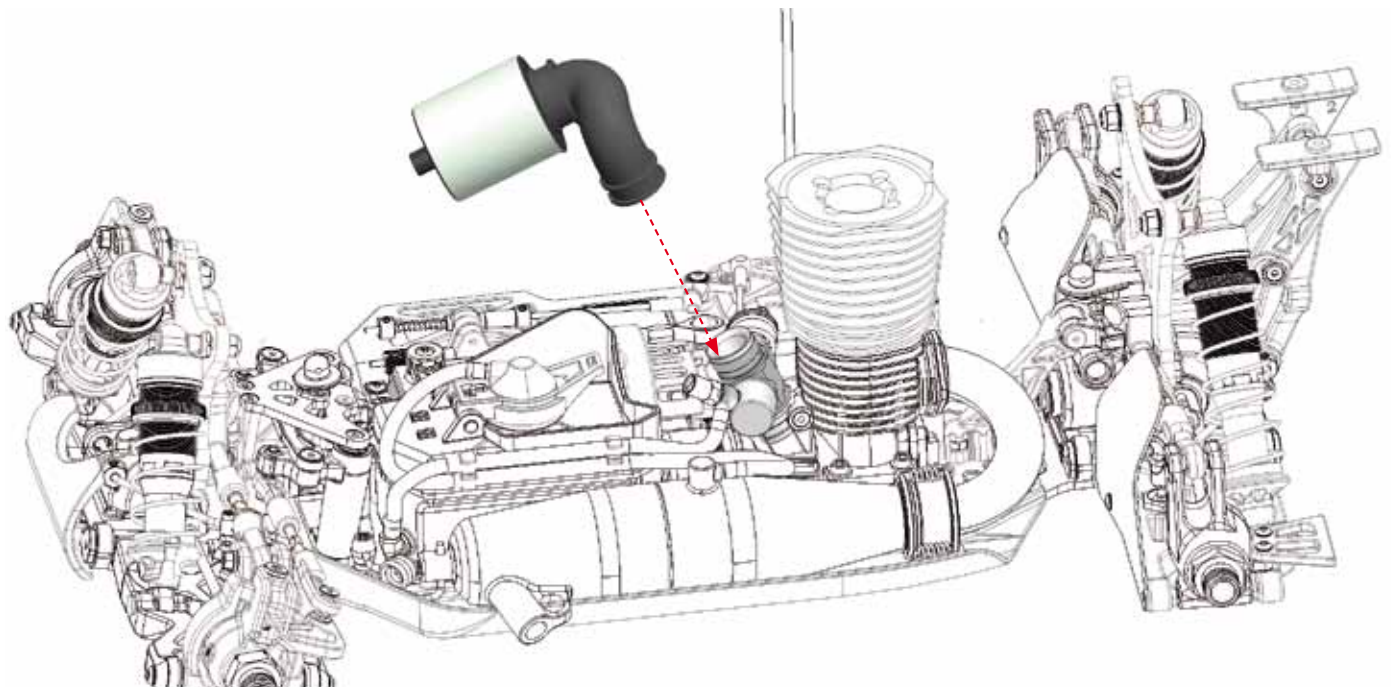
E

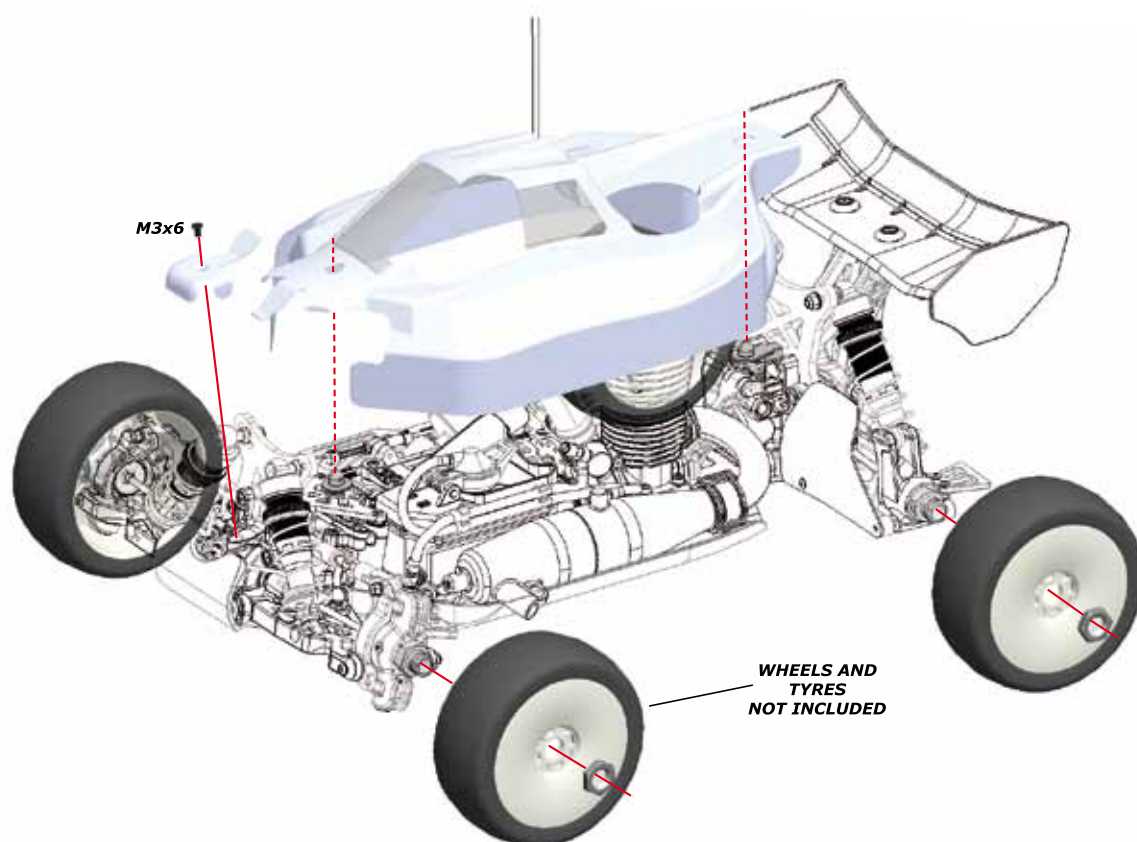
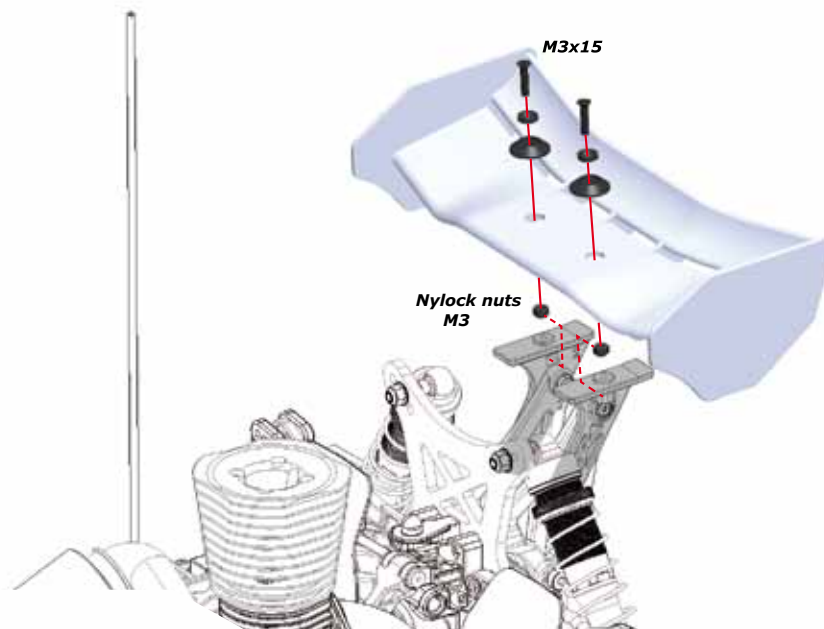
3

NOTE: Put sufficient air filter oil on the airfilter before use (DO NOT use silicone oil!)

E

3A







REFERENCE GUIDE AND EXPLODED VIEWS

Description

600008 Serpent 811 Cobra Buggy 2.0
GP 1/8 4wd

Manual / Decals

600662 Manual 811 Cobra 2.0
600329 Decal sheet S811 black/white (2)
600332 Decal sheet S811 chrome (2)

Ball Bearings

1312 Ballbearing 5x8 flanged SS (2)
1311 Ballbearing 5x8x2 (2)
1315 Ballbearing 5x10x4 SS (2)
1321 Ballbearing 6x10x3 SS (2)
1337 Ballbearing 15x21x4 SS (2)
1393 Ballbearing 13X19X4 SS (2)
1394 Ballbearing 8x14x4 flanged SS (2)
1395 Ballbearing 8x19x6 SS (2)
1396 Ballbearing 8x16x5 SS (2)
600616 Bearingset 811 V2 (26)
600617 Bearingset small S811 v2 (12)

Radio installation / Battery

600106 Switch cover (2)
600120 Throttle / brake slider set
600127 Throttle / steering lever set
600131 Balljoint set (19)
600139 Sideguard L+R
600333 Brake / Throttle links (3)
600358 Radiobox V2 (3)
600359 Servo lever / mounts V2 (30)
600360 Throttle lever shaft (1)
600361 Throttle balls (2+1)
600362 Collar set V2 (3)
600363 Throttle rod V2 (1)
600500 Servo spacers (8)
804181 Throttle spring (2)

Optional

600272 Steering servo rod titanium
600290 Servo lever steering 23T alu
600291 Servo lever steering 24T alu
600292 Servo lever steering 25T alu
600293 Servo lever throttle 23T alu
600294 Servo lever throttle 24T alu
600295 Servo lever throttle 25T alu

Servo Saver / Steering section

401057 Rod 26mm steel (2)
600105 Servosaver spring
600109 O-ring servosaver nut (4)
600122 Brace front / rear nylon
600124 Bodymount FR+RR
600127 Throttle / steering lever set
600128 Servo saver set nylon (3)
600131 Balljoint set (19)
600153 Topdeck front carbon

600167 Steeringrack mount
600169 Servosaver adjust nut
600170 Servosaver shaft outer
600173 Steeringrack option 3
600178 Shim conical M3x7.5x1 (10)
600182 Bolt steeringrack (2)
600186 Track rod M4x51 (2)
600191 Pivotball 6mm steering (4)
600199 Servosaver post (2)
600227 Pivot ball steering rod (2)
600334 Spacer steering post (2)

Optional

600171 Steeringrack option 1
600172 Steeringrack option 2
600272 Steering servo rod titanium
600278 Servo saver post alu (2)
600296 Servosaver alu coated (3)
600330 Servo saver spring hard

Fuel Tank and parts

1493 Pressure nipple m3 (4)
1494 Silicone tubing 2x5x50 white
1667 Body-clip medium (10)
600115 Tank mounting rubber (4)
600123 Clip /plug set for fuel tube (7)
600126 Washer/nut nylon M3 (12+15)
600335 Post fuel tank (2)

Shock Absorbers

600111 Shock membrane (10)
600112 O-ring shock bottom (10)
600113 O-ring shock nut (10)
600118 Shock part frame nylon (10)
600145 Shock pistons (4x4)
600158 Adjust nut shock / oring (2)
600159 Shock top alu (2)
600161 Shock body coated front (2)
600179 Shock mount (2)
600180 Washer shock shaft (4)
600184 Pivotball 6.75 double (4)
600194 Shockshaft FR (2)
600224 Bolt shock (4)
600234 Shock cartridge stepped (4)
600235 Shock cartridge (4)
600263 Washer M3 alu (12)
600331 Shock boot rubber (4)
600387 Shock body coated rear truggy (2)
600388 Shock boot truggy (4)
600640 Shock shaft rr 811 2.0 (2)

Optional

600282 Shock bushing delrin (4)
600287 Shock spring support alu (4)
600306 Shock shaft FR TiN coating (2)
600159 Shock top alu black (2)
600349 Shock pistons conical 6 hole (4)

- 600350 Shock pistons conical 8 hole (4)
- 600351 Shock pistons conical 10 hole (4)
- 600357 Membrane webbed silicone (4)
- 600488 Shock piston square 8 hole (4)
- 600645 Shockrod 811 2.0 rear Tin coated (2)

Shock Springs

- 600648 Spring FR pink V2 (0.73N/4.15LB)(2)
- 600654 Spring RR pink V2 (0.58N/3.3LB) (2)

Optional

- 600646 Spring FR orange V2 (0.66N/3.8LB)(2)
- 600647 Spring FR red V2 (0.70N/4.0LB) (2)
- 600649 Spring FR blue V2 (0.75N/4.3LB) (2)
- 600650 Spring FR purple V2 (0.79N/4.5LB) (2)
- 600651 Spring FR green V2 (0.81N/4.65LB) (2)
- 600652 Spring RR orange V2 (0.53N/3.0LB) (2)
- 600653 Spring RR red V2 (0.56N/3.2LB) (2)
- 600655 Spring RR blue V2 (0.60N/3.4LB) (2)
- 600656 Spring RR purple V2 (0.61N/3.5LB) (2)
- 600657 Spring RR green V2 (0.63N/3.6LB) (2)
- 600658 Spring set FR V2 (6x2)
- 600659 Spring set RR V2 (6x2)

Chassis / Guards

- 600124 Bodymount FR+RR
- 600139 Sideguard L+R
- 600141 Bumper
- 600154 Chassis alu 7075 T6 anodised

Optional

- 600288 Chassis brace front alu
- 600289 Chassis brace rear alu
- 600469 Chassis S811 hard anodized

Front section

- 600102 Driveshaft 98mm (2)
- 600108 Hingepin (2)
- 600126 Washer/nut nylon M3 (12+15)
- 600129 Diff case front set
- 600131 Balljoint set (19)
- 600135 Wishbone front L+R
- 600136 C-Hub 10 L+R
- 600141 Bumper
- 600151 Shocktower front carbon
- 600168 Camberlink pivotball (4)
- 600174 Antirollbar nut (2)
- 600176 Suspension bracket alu FR RR
- 600177 Suspension bracket alu FR FR
- 600178 Shim conical M3x7.5x1 (10)
- 600183 Bushing suspensionarm (4)
- 600185 Pivotball 7.5 double (4)
- 600188 Track rod M5x53 (2)
- 600190 Pin steeringblock (4)
- 600192 Pivotball antirollbar (2)
- 600193 Pivotball threaded antirollbar (2)
- 600197 Driveshaft insert (2)
- 600222 Wheelnut 17mm (4)
- 600223 Wheelhexagon alu (4)
- 600225 Droop screw (4)
- 600241 Antiroll bar front 2.5mm
- 600326 Special screw FR whisbone (4)
- 600381 Gear coupler rubber boot (2)
- 600472 Gear coupler V3
- 600473 Gear coupler sleeve (2)
- 600478 Wheelaxle FR V2 (2)
- 600481 Steeringblock L+R V2

- 600509 Driveshaft center front 811 V3
- 600514 Diff pinion 10T 811 V3
- 903343 Antirollbar spacer 3mm (2)

Optional

- 600240 Antiroll bar front 2.3mm
- 600242 Antiroll bar front 2.7mm
- 600263 Washer M3 alu (12)
- 600268 C-Hub 12 L+R
- 600269 Track rod M5x46 titanium (2)
- 600271 Track rod M4x51 titanium (2)
- 600273 Shock mount titanium (2)
- 600274 Wheelhexagon light -2mm (2)
- 600275 Wheelhexagon light -1mm (2)
- 600276 Wheelhexagon light -0mm (2)
- 600297 Lightweight wheel nut 17mm (4)
- 600336 Antiroll bar front 1.8mm
- 600337 Antiroll bar front 2.0mm
- 600343 Bushing / spacer Steering block alu (8)
- 600484 Antirollbar spacer alu (2)
- 600485 Pivotball anti roll bar (2)
- 600486 Bushing suspension arm fr alu (4)
- 600487 Bolt shock titanium (4)
- 600490 Hingepin fr / rr TiN coated (2)
- 600495 Diff pinion 13T
- 600497 Steeringblock L+R alu V2
- 600611 Steeringblock alu 0-Deg L+R
- 600663 C-hub 16 L+R alu

Middle section

- 600119 Center diff holder parts (3)
- 600121 Brake levers / adjusters
- 600148 Diskbrake front fibreglass
- 600149 Diskbrake rear fibreglass
- 600157 Collar double (2)
- 600164 Brake excenter (2)
- 600165 Brake lever insert (2)
- 600181 Bolt brake plate (4)
- 600203 Brake plate (4)
- 600208 Brake spring (4)
- 600226 Brake piston solid (2)
- 600333 Brake / Throttle links (3)
- 600369 Brake plate thick (2)

Optional

- 600281 Brake piston /spring (2/2/2)
- 600286 Center diff holder alu (2)
- 600342 Mono enginemount top (2)
- 600345 Brake set pro
- 600346 Brake pad Pro (2)

Rear Section

- 600108 Hingepin (2)
- 600122 Brace front / rear nylon
- 600124 Bodymount FR+RR
- 600126 Washer/nut nylon M3 (12+15)
- 600130 Diff case rear set
- 600131 Balljoint set (19)
- 600132 Suspension bracket inserts (30)
- 600155 Suspension bracket RR RR 3
- 600156 Suspension bracket RR FR 2
- 600168 Camberlink pivotball (4)
- 600174 Antirollbar nut (2)
- 600178 Shim conical M3x7.5x1 (10)
- 600185 Pivotball 7.5 double (4)
- 600188 Track rod M5x53 (2)
- 600189 Hingepin RR outer (2)

600192 Pivotball antirollbar (2)
600193 Pivotball threaded antirollbar (2)
600197 Driveshaft insert (2)
600204 Bolt transmission brace rear (2)
600222 Wheelnut 17mm (4)
600225 Droop screw (4)
600237 Antiroll bar rear 2.3mm
600261 Socket screw M3x8 (6)
600365 Spacers 1.25mm + 2.5mm
for wheelbase (4+2)
600381 Gear coupler rubber boot (2)
600441 Wing mount set low 811
600472 Gear coupler V3
600473 Gear coupler sleeve (2)
600475 Wheelaxle boot RR (2)
600510 Driveshaft center rear 811 V3
600514 Diff pinion 10T 811 V3
600633 Wishbone rear L+R 811 2.0
600634 Upright L+R 811 2.0
600635 Driveshaft rr 811 2.0 (2)
600636 Wheelaxle rr 811 2.0 (2)
600637 Shocktower carbon rr 811 2.0
600638 Wheel scraper rr L+R 811 2.0
600639 Mud guard L+R 811 2.0
600641 Hex adaptor -2mm (2)
803134 Spacer anti roll bar RR720(2)

Optional

600238 Antiroll bar rear 2.5mm
600239 Antiroll bar rear 2.7mm
600263 Washer M3 alu (12)
600265 Suspension bracket RR FR 2.5 - 4.5
600266 Suspension bracket RR RR HR 3
600267 Suspension bracket RR RR LR 3
600270 Track rod M5x53 titanium (2)
600273 Shock mount titanium (2)
600274 Wheelhexagon light -2mm (2)
600275 Wheelhexagon light -1mm (2)
600276 Wheelhexagon light -0mm (2)
600277 Wing black nylon
600297 Lightweight wheel nut 17mm (4)
600300 Post wingmount alu (2)
600301 Wing washer alu (2)
600308 Suspension bracket RR FR 2.5 - 4.5
600338 Antiroll bar rear 1.8mm
600339 Antiroll bar rear 2.0mm
600434 Antiroll bar rear 2.4mm
600490 Hingepin fr / rr TiN coated (2)
600491 Hingepin rr outer TiN coated (2)
600484 Antirollbar spacer alu (2)
600487 Bolt shock titanium (4)
600485 Pivotball anti roll bar (2)
600495 Diff pinion 13T
600644 Shocktower 811 2.0 rear alu light
600660 Wheelaxle rr 811 2.0 alu (2)
600661 Upright L+R 811 2.0 alu

Differential

600110 O-ring diff outdrive (10)
600144 Diff housing
600147 Diff gasket (3)
600198 Spurgear 46T
600200 Diff outdrive (2)
600201 Diff gear 43T
600209 Diff pin 10T (2)
600210 Diff pin outdrive (2)

600354 Shim 14x15.5x 0.65 (4)
600356 Shim 14x15.5x0.2 (10)
600376 Diff outdrive center (2)
600421 Oring centerdiff V2 (10)
600425 Diff housing V2
600627 Diff gear 10T + 20T (4+2) V2

Optional

600279 Spur gear 44T
600280 Spur gear 48T
600323 Diff FR / RR
600324 Diff center 46T
600480 Diff gear 44T
600501 Complete FR/RR 44T diff
600606 Spurgear 46T composite
600607 Spurgear 48T composite
600608 Spurgear 50T composite

Clutch

600163 Flywheel alu
600206 Clutch nut (2)
600219 Clutch bell 16T
600228 Clutch shoe carbon (4)
600230 Clutch spring medium 0.9mm (4)
600261 Socket screw M3x8 (6)
600262 Clutch screw (4)

Optional

600175 Clutchshoe alu (4)
600216 Clutch bell 13T
600217 Clutch bell 14T
600219 Clutch bell 16T
600220 Clutch bell 17T
600229 Clutch spring soft (4)
600231 Clutch spring hard (4)
600232 Clutch spring X hard (4)
600233 Clutch spring set (4x4)
600244 Clutch-set alu / carbon
600355 Clutch shoe set alu / carbon (2+2)
600518 Clutch bell 13T vented
600519 Clutch bell 14T vented
600520 Clutch bell 15T vented
600521 Clutch bell 16T vented
600522 Clutch bell 17T vented

Body / Wing

600439 Wing white low 811
600523 Body Avenger 1/8 Cobra GP

Optional

600143 Wing white nylon
600146 Body S811 Cobra + nose-cone
600277 Wing black nylon
600440 Wing black low 811

Hardware

110100 Screw allen countersunk m3x10 (10)
110101 Screw allen countersunk m4x8 (10)
110102 Screw allen countersunk m4x10 (10)
110103 Screw allen countersunk m4x16 (10)
110104 Screw allen countersunk M3x8 (10)
110105 Screw allen countersunk m4x12 (10)
110106 Screw allen flanged roundhead m5x12 (10)
110107 Screw allen cilinderhead m3x16 (10)
110108 Screw allen roundhead m3x6 (10)
110109 Screw allen roundhead m3x10 (10)
110110 Screw allen roundhead m3x16 (10)
110111 Screw allen roundhead m3x14 (10)
110112 Screw allen roundhead m3x12 (10)

110113	Screw allen roundhead m4x8 (10)	110176	Screw allen cilinderhead M3x18 (10)
110114	Setscrew allen m3x8 (10)	110200	Pin 2.5x8 (10)
110115	Setscrew allen m3x4 (10)	110201	Pin 3x12 (10)
110116	Setscrew allen m3x3 (10)	110202	Pin 5x5 (10)
110117	Setscrew allen m3x12 (10)	110203	Pin 3x14 (10)
110118	Setscrew allen m4x4 (10)	110204	Pin 3x20 (10)
110119	Setscrew allen m4x6 (10)	110205	Pin 3x22 (10)
110120	Setscrew allen m4x10 (10)	110206	Pin 2.5x22 (10)
110121	Setscrew allen m5x6 (10)	110207	Pin 2.5x12 (10)
110122	Screw allen countersunk m3x6 (10)	110208	Pin nra 2x9.8 (4)
110123	Screw philips roundhead 3.5x13 (10)	110209	Pin nra 2x18 (4)
110124	Screw allen countersunk m3x8 (10)	110210	Pin 3x13 (10)
110125	Screw allen countersunk m3x20 (10)	110211	Pin 2.5x13 (10)
110126	Screw allen countersunk m2.5x12 (10)	110212	Pin 2.5x17 (10)
110127	Screw allen countersunk m3x12 (10)	110213	Pin 2.5x10 (10)
110128	Screw allen roundhead m3x5 (10)	110214	Pin 3x15 (10)
110129	Screw allen cilinderhead m3x10 (10)	110215	Pin 2x12 (10)
110130	Screw allen roundhead m2.5x6 (10)	110216	Pin 2.5x15 (10)
110131	Screw allen roundhead m2.5x10 (10)	110217	Pin 2x9 (10)
110132	Screw allen countersunk m3x16 (10)	110218	Pin 3x10 (10)
110133	Screw philipshead countersunk 2.5x8 wide (10)	110219	Pin 2x14 (10)
110134	Screw philipshead countersunk 2.5x10 wide (10)	110300	E-clip 2.3 (10)
110135	Screw allen countersunk M2.5x10 (10)	110301	E-clip 3.2 (10)
110136	Screw allen countersunk M2.5x8 (10)	110302	E-clip 4.0 (10)
110137	Setscrew allen M3x6 (10)	110303	E-clip 5.0 (10)
110138	Screw allen countersunk M4x14 (10)	110304	E-clip 7.0 (10)
110139	Screw allen countersunk M3x40 (10)	110305	Seeger clip 12x1.0 (10)
110140	Screw allen roundhead M3x20 (10)	110306	E-clip 6.0 (10)
110141	Screw allen roundhead M3x22 (10)	110400	Shim 6.0x10x0.2 (10)
110142	Screw allen roundhead M3x25 (10)	110401	Shim 3.2x7x0.5 (10)
110143	Screw allen roundhead M4x18 (10)	110402	Nut nylock M3 (10)
110144	Screw allen roundhead M3x18 (10)	110403	Nut nylock M4 (10)
110145	Screw allen roundhead flanged M3x12(10)	110404	Shim 6x8x0.3 (10)
110146	Screw allen roundhead flanged M3x16 (10)	110405	Nut nylock M4 flanged (10)
110147	Screw ph roundhead widethread 2.5x5 (10)	110406	Nut nylock M2.2 (10)
110148	Setscrew allen M5x4 (10)	110407	Nut M3 (10)
110149	Screw allen countersink M2x10 (10)	110408	Shim 3x5x0.3 (10)
110150	Screw M6x12 nylon black (2)	110409	Shim 3x5x1 (10)
110151	Screw allen cilinderhead M4x10 (10)	110410	Shim 3x5x2 (10)
110152	Screw allen cilinderhead M3x8 (10)	110411	Shim 3x5x4 (10)
110153	Screw allen roundhead M2.3x6 (10)	110412	Shim 3.5x8x1 (10)
110154	Setscrew allen M3x10 (10)	110413	Shim 3.5x12x0.2 (10)
110155	Setscrew allen M3x5 (10)	110414	Shim 3x6x0.1 (10)
110156	Screw allen countersunk M2.2x6 (10)	110415	Shim 3x6x0.5 (10)
110157	Screw allen countersunk M3x5 (10)	110416	Shim 3x6x0.8 (10)
110158	Screw allen countersunk M3x15 (10)	110417	Shim 3x6x3 (10)
110159	Screw allen countersunk M3x18 (10)	110418	Shim 4x8x0.1 (10)
110160	Screw allen cilinderhead M2.2x12 (10)	110419	Shim 4x9.5x1 (10)
110161	Screw allen cilinderhead M2x6 (10)	110420	Shim 4x9.5x2(10)
110162	Setscrew allen M3x2.5 (10)	110421	Shim 4x9.5x4(10)
110163	Setscrew allen M3x2 (10)	110422	Shim 4x10x0.3 (10)
110164	Screw allen roundhead M3x4 (10)	110423	Shim 5x8x0.1 (10)
110165	Screw allen cilinderhead M2x5 (10)	110424	Shim 5x8x0.3 (10)
110166	Screw allen countersunk M2.5x5 (10)	110425	Shim 5x10x0.3 (10)
110167	Screw allen roundhead flanged M3x18 (10)	110426	Shim 5x10x0.5 (10)
110168	Screw allen roundhead flanged M3.5x10(10)	110427	Shim 5x15x0.3 (10)
110169	Screw allen roundhead flanged M4x10 (10)	110428	Shim 6.5x8x0.25 (10)
110170	Screw allen roundhead flanged M3x28 (10)	110429	Shim 6x11.75x0.2 (10)
110171	Screw ph countersunk widethread 2.5x15(10)	110430	Shim 6x12x0.5 (10)
110172	Screw allen roundhead flanged M3X6 (10)	110431	Shim 8x11x0.1 (10)
110173	Screw ph countersunk widethread 2.5x12 (10)	110432	Shim 8x11x0.2 (10)
110174	Screw allen countersunk M4x6 (10)	110433	Shim 12x15x0.25 (10)
110175	Screw allen cilinderhead M3x40 (10)	110434	Shim 12x18x0.3 (10)
		110435	Shim 13x16x0.2 (10)
		110436	Shim 3x5x3 (10)

110437 Nut M2.5 (10)
 110438 Shim 2.5x6x0.5 (10)
 110439 Shim 3x7.5x1 (10)
 110440 Shim 2.5x5x0.4 (10)
 110441 Nut nylock M3 flanged (10)
 110442 Shim 4x8x0.6 (10)
 110443 Shim 5x15x0.2 (10)
 110444 Nut M4 nylon (10)

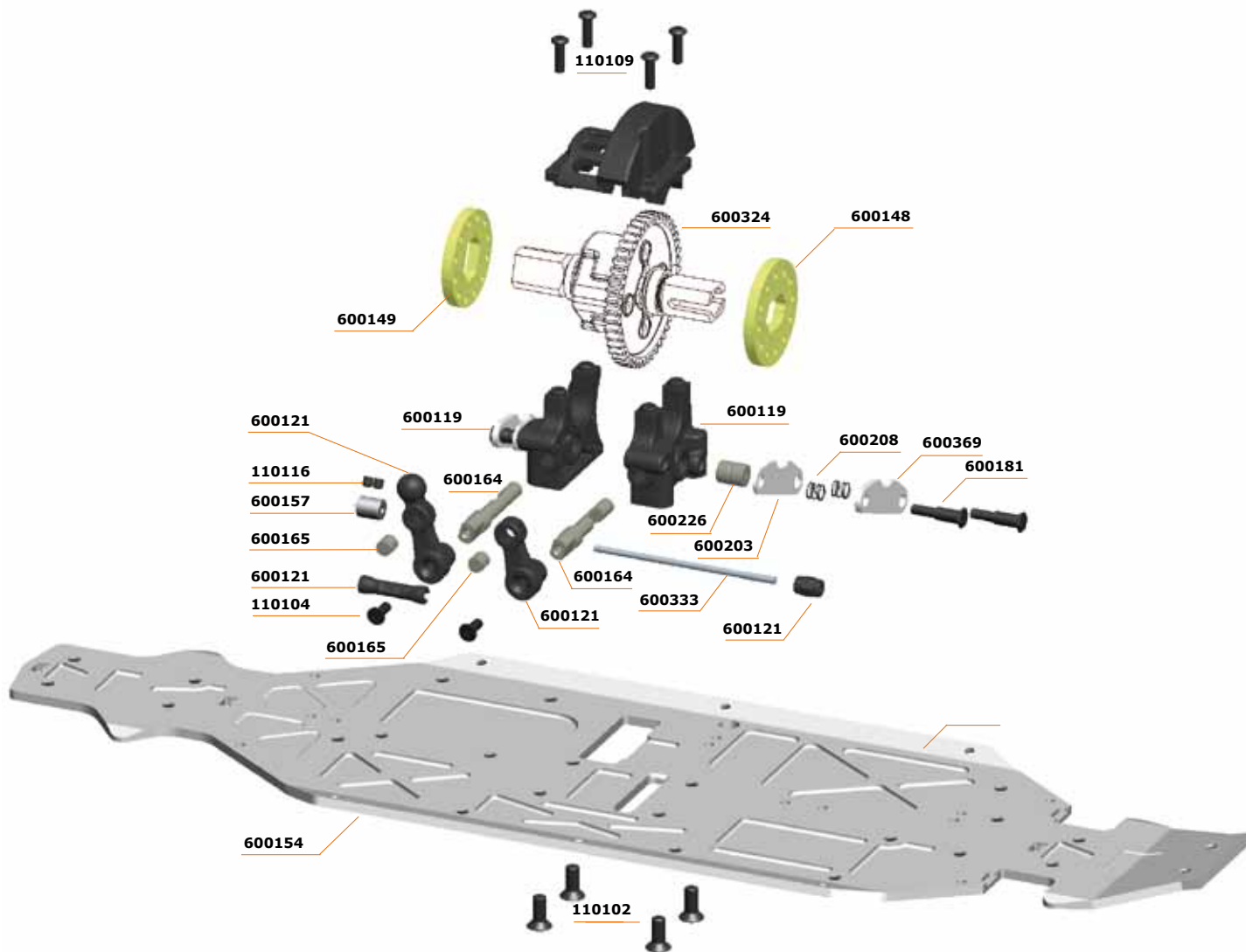
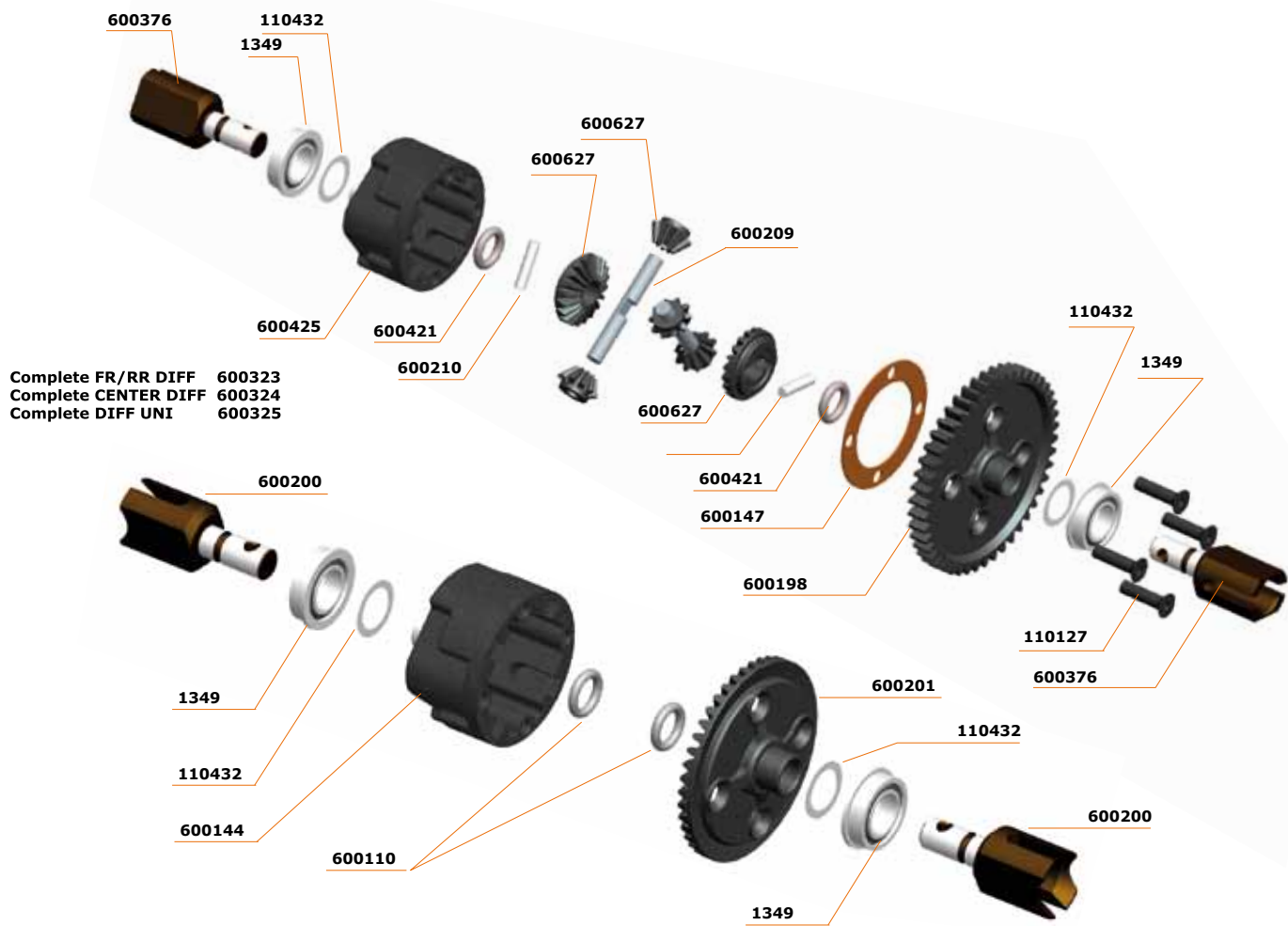
Merchandising

1891 Serpent medium promo decal 20x12.5 (2)
 1892 Serpent windowshop decal 20x12.5 (2sided)
 1893 Serpent decal XL (30x60cm)
 1895 Shopping-bag Serpent orange
 1897 Towel Serpent large
 1898 Lanyard Serpent orange
 1900 Cap flat-brim Serpent black
 1998 Cap serpent black-orange
 190100 T-shirt serpent black (s)
 190101 T-shirt serpent black (m)
 190102 T-shirt serpent black (l)
 190103 T-shirt serpent black (xl)
 190104 T-shirt serpent black (xxl)
 190110 Sweater hooded serpent black (s)
 190111 Sweater hooded serpent black (m)
 190112 Sweater hooded serpent black (l)
 190113 Sweater hooded serpent black (xl)
 190114 Sweater hooded serpent black (xxl)
 190116 T-shirt lady black Serpent (S)
 190117 T-shirt lady black Serpent (M)
 190118 T-shirt lady black Serpent (L)
 190119 T-shirt lady black Serpent (XL)
 190121 T-shirt Serpent LTS white (S)
 190122 T-shirt Serpent LTS white (M)
 190123 T-shirt Serpent LTS white (L)
 190124 T-shirt Serpent LTS white (XL)
 190125 T-shirt Serpent LTS white (XXL)
 190127 T-shirt Serpent DTR orange (S)
 190128 T-shirt Serpent DTR orange (M)
 190129 T-shirt Serpent DTR orange (L)
 190130 T-shirt Serpent DTR orange (XL)
 190131 T-shirt Serpent DTR orange (XXL)
 190132 T-shirt Serpent DTR black (S)
 190133 T-shirt Serpent DTR black (M)
 190134 T-shirt Serpent DTR black (L)
 190135 T-shirt Serpent DTR black (XL)
 190136 T-shirt Serpent DTR black (XXL)
 190137 T-shirt Serpent offroad orange (S)
 190138 T-shirt Serpent offroad orange (M)
 190139 T-shirt Serpent offroad orange (L)
 190140 T-shirt Serpent offroad orange (XL)
 190141 T-shirt Serpent offroad orange (XXL)
 190142 T-shirt Serpent offroad black (S)
 190143 T-shirt Serpent offroad black (M)
 190144 T-shirt Serpent offroad black (L)
 190145 T-shirt Serpent offroad black (XL)
 190146 T-shirt Serpent offroad black (XXL)
 190150 Dress shirt Serpent black-orange (S)
 190151 Dress shirt Serpent black-orange (M)
 190152 Dress shirt Serpent black-orange (L)
 190153 Dress shirt Serpent black-orange (XL)
 190154 Dress shirt Serpent black-orange (XXL)
 190155 Dress shirt Serpent black-orange (XXXL)
 190156 Polo shirt Serpent black-orange (S)
 190157 Polo shirt Serpent black-orange (M)
 190158 Polo shirt Serpent black-orange (L)

190159 Polo shirt Serpent black-orange (XL)
 190160 Polo shirt Serpent black-orange (XXL)
 190161 Polo shirt Serpent black-orange (XXXL)
 190162 T-shirt Serpent offroad white (S)
 190163 T-shirt Serpent offroad white (M)
 190164 T-shirt Serpent offroad white (L)
 190165 T-shirt Serpent offroad white (XL)
 190166 T-shirt Serpent offroad white (XXL)
 190167 T-shirt Serpent LTS black (S)
 190168 T-shirt Serpent LTS black (M)
 190169 T-shirt Serpent LTS black (L)
 190170 T-shirt Serpent LTS black (XL)
 190171 T-shirt Serpent LTS black (XXL)
 190172 Winter jacket Serpent (S)
 190173 Winter jacket Serpent (M)
 190174 Winter jacket Serpent (L)
 190175 Winter jacket Serpent (XL)
 190176 Winter jacket Serpent (XXL)
 190177 T-shirt Serpent LTS orange (S)
 190178 T-shirt Serpent LTS orange (M)
 190179 T-shirt Serpent LTS orange (L)
 190180 T-shirt Serpent LTS orange (XL)
 190181 T-shirt Serpent LTS orange (XXL)

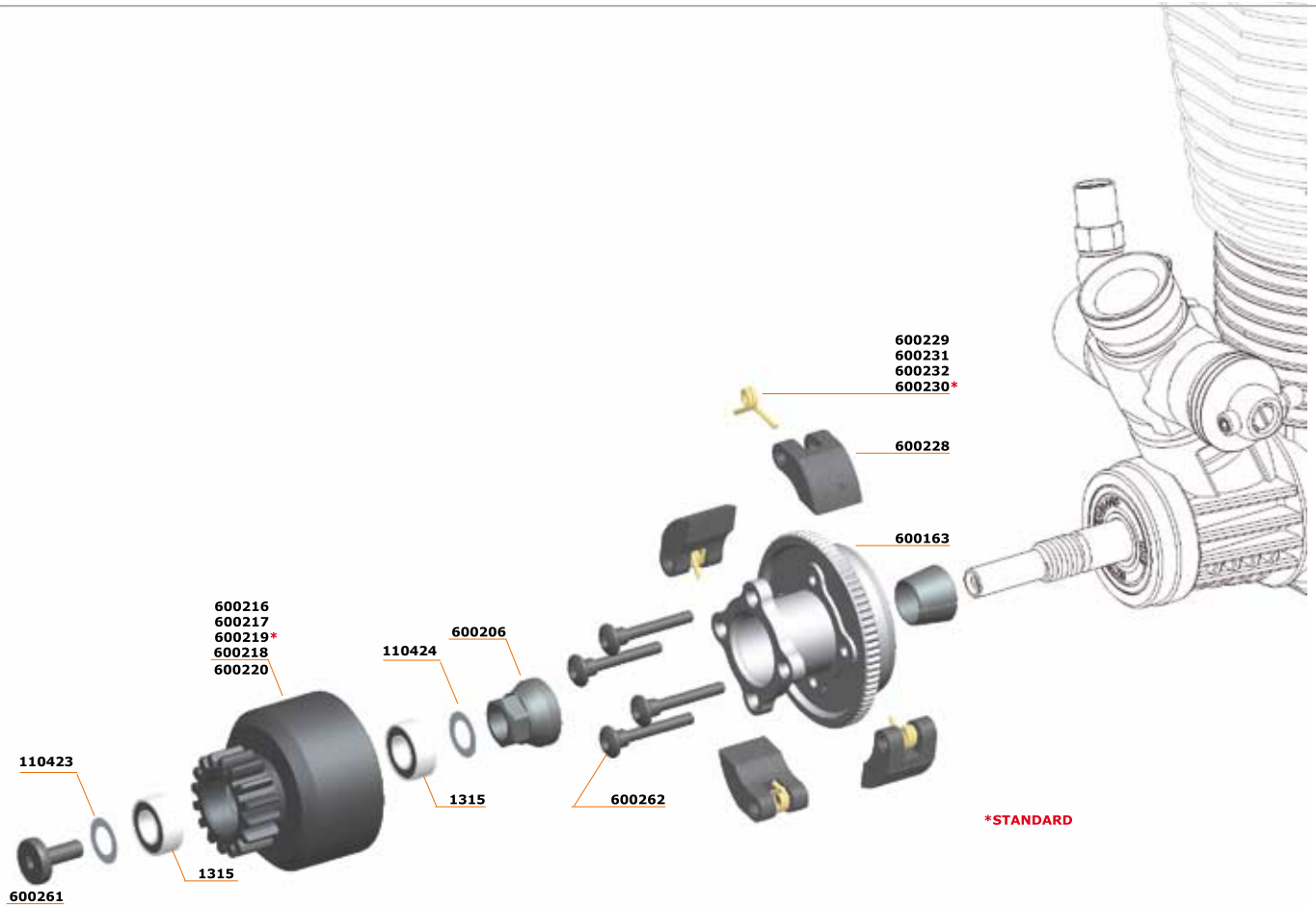
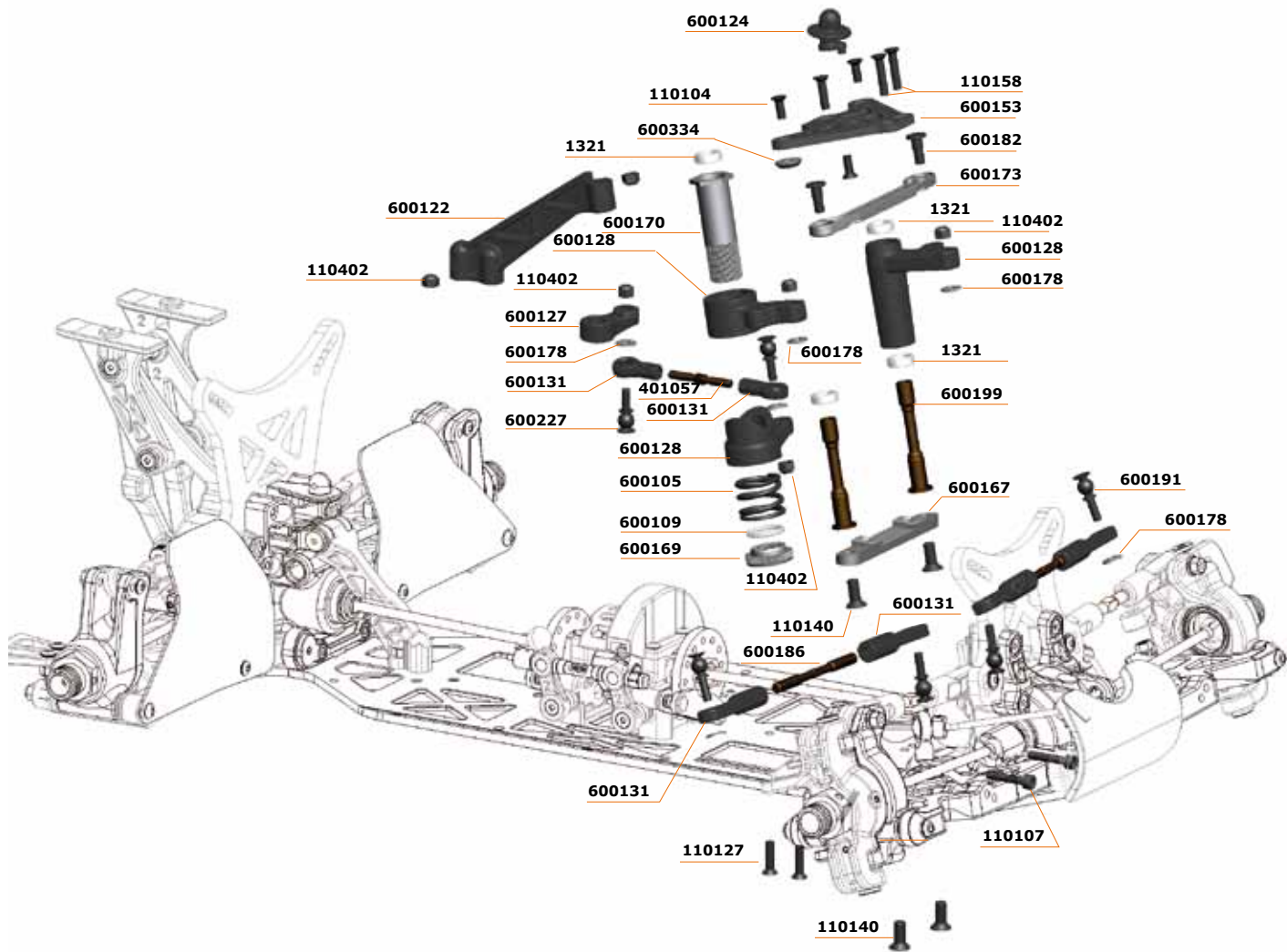
Pit equipment

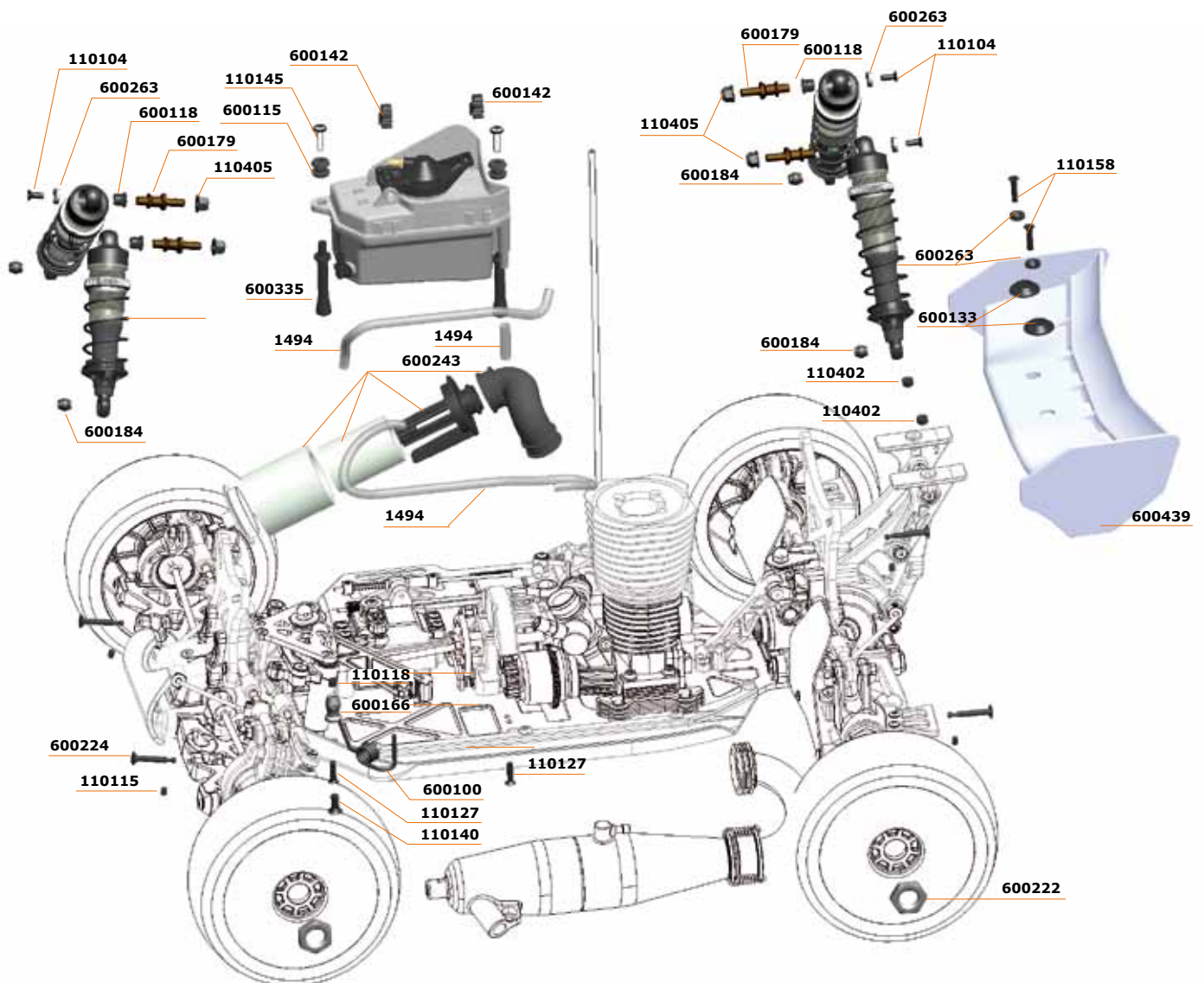
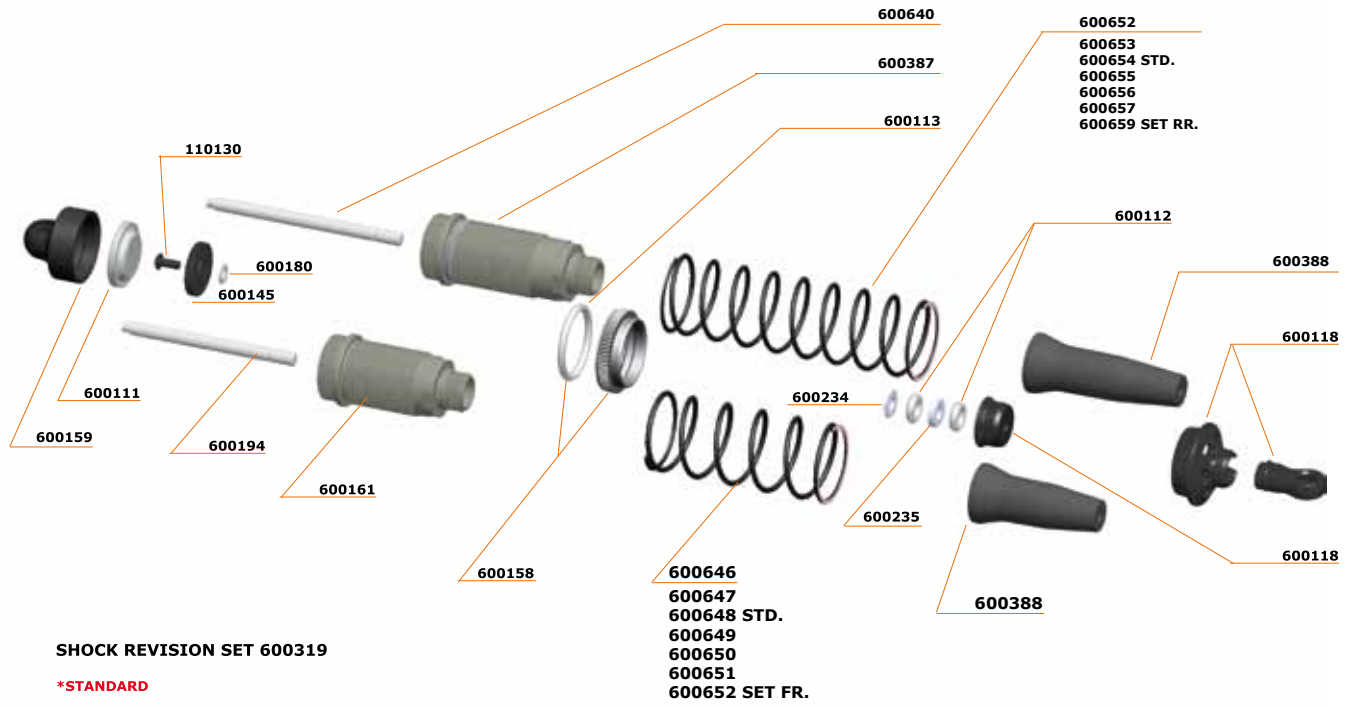
190501 Tool-bag
 190502 Pit-bag medium. 3 drawers
 190503 Fuel bottle 500ml











2.0
COBB



www.serpent.com
info@serpent.com

