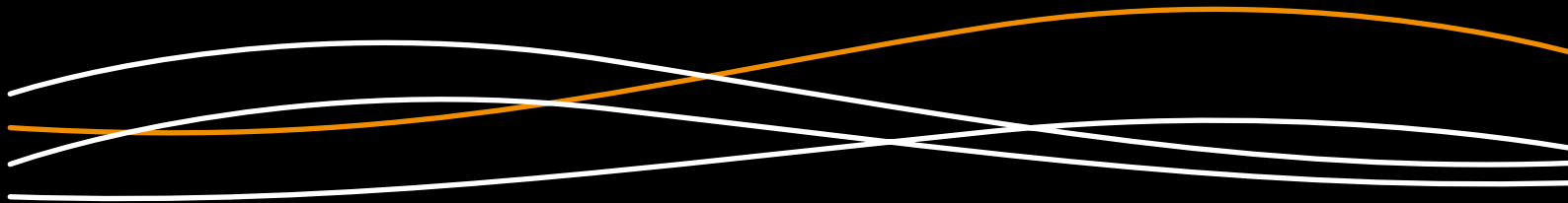




Update MANUAL





Introduction

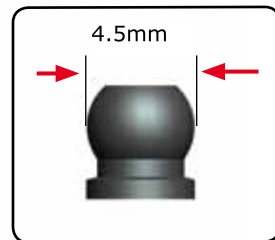
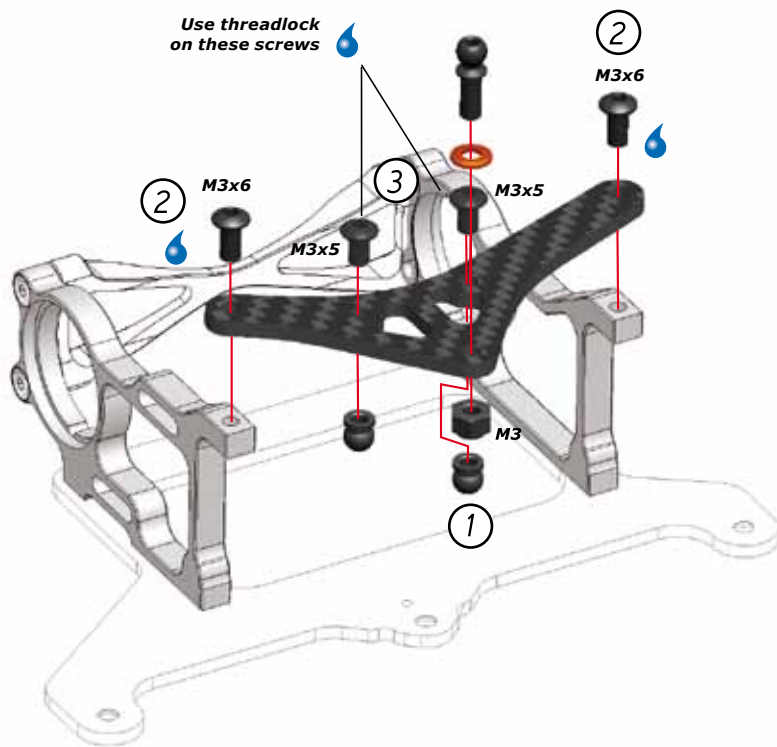
Welcome to the ever growing team of Serpent 1/12 scale racers. The S120-LT have been developed further into the S120-LTX. Main changes are in the carbon fibre parts. The main pivot point has been moved more forward resulting in a more stabile, and thus faster ride. This manual shows the new parts and the affected manual pages.

Enjoy the build and racing the S120-LTX

Team Serpent

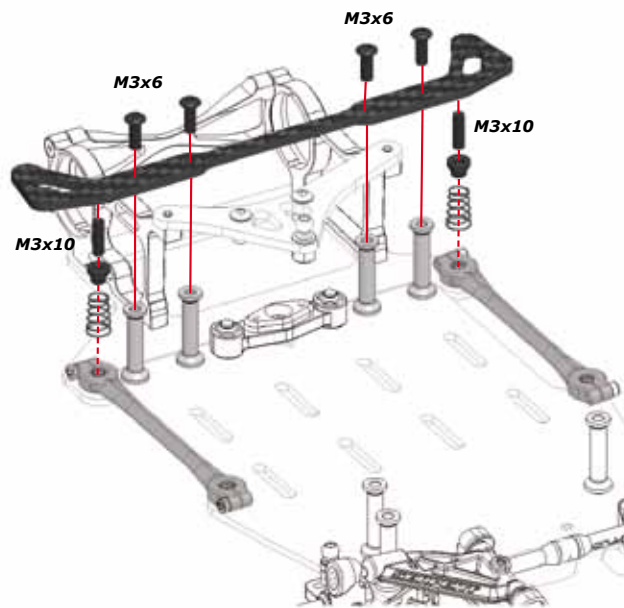
What's new

411271	Chassis carbon S120 LTX
411272	Lower pod plate carbon S120 LTX
411273	Topdeck carbon S120 LTX
411274	Link top plate carbon S120 LTX
411275	Shock bracket carbon S120 LTX
411276	Cross brace carbon S120 LTX



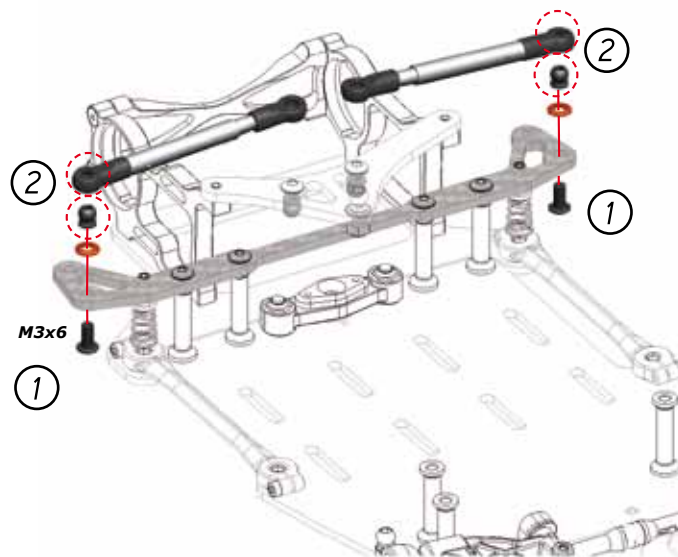
A

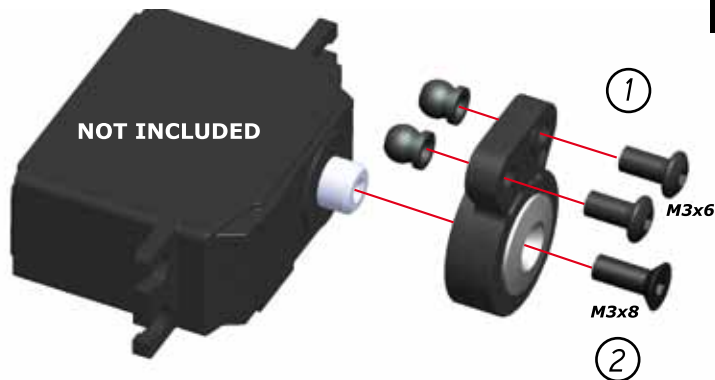
12



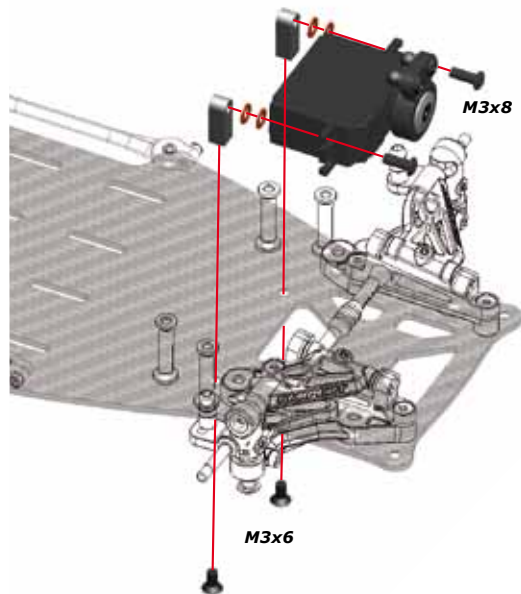
A

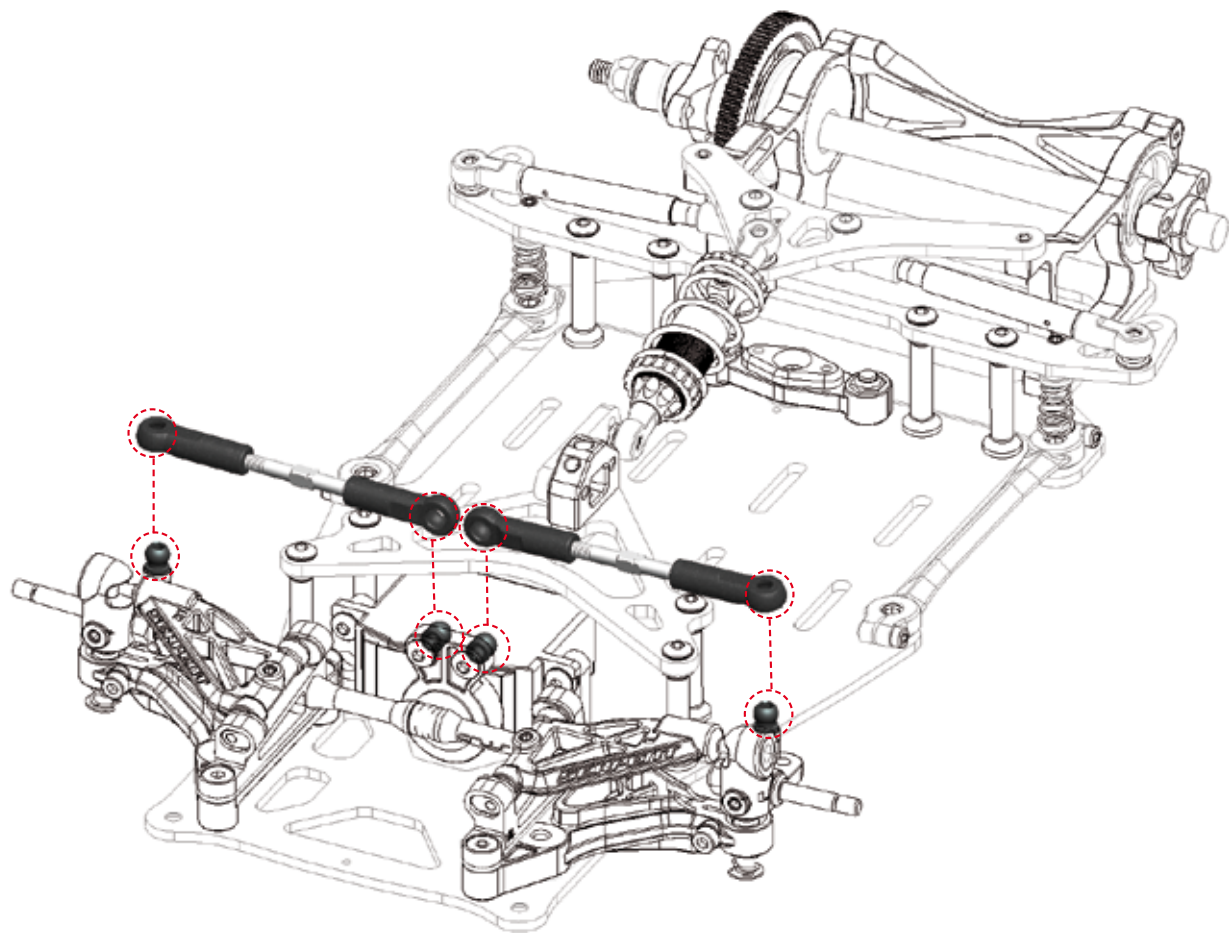
21

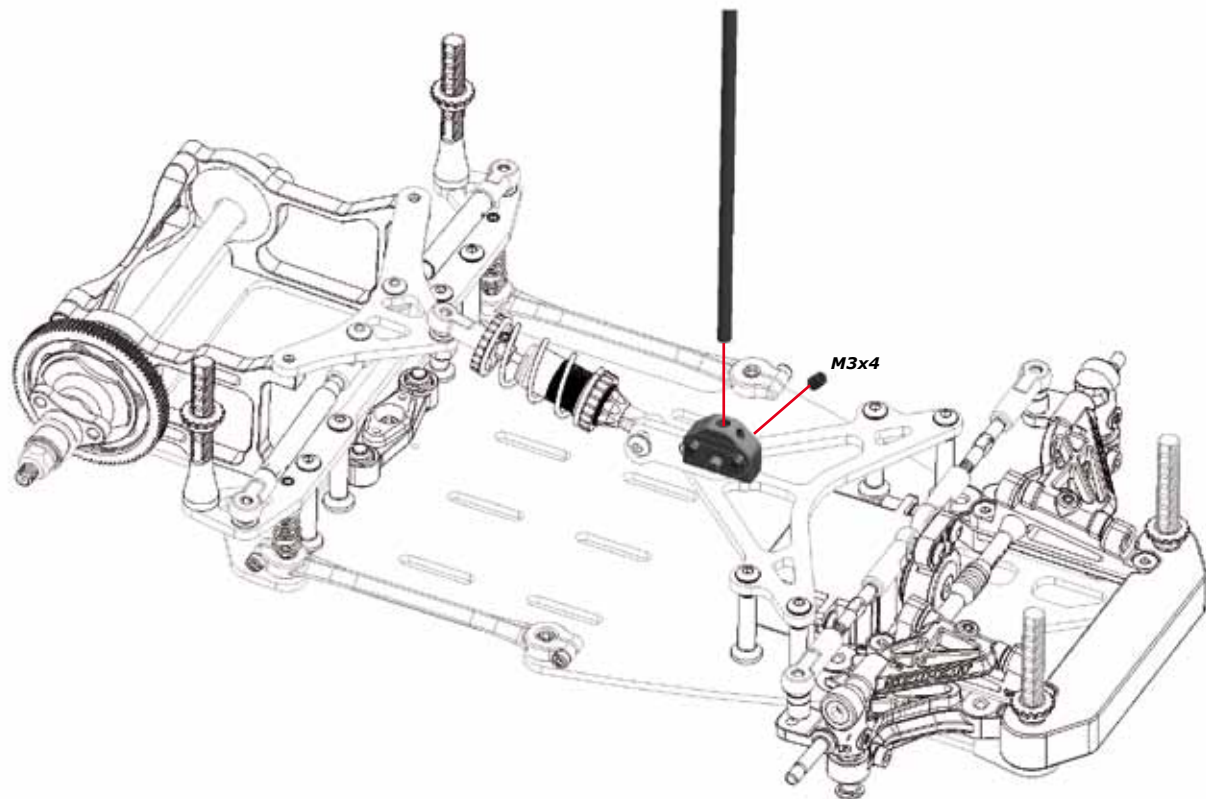




Use the following servo saver
insert with these brands of servos.
23 - Sanwa / KO / JR
24 - Hitec
25 - Futaba







snl^{EX}



www.serpent.com
info@serpent.com

