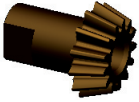


Update Serpent Cobra Buggy 2.0



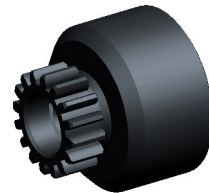
600495



600480



600280



600216

The gearing of the Cobra buggy has been updated; this car-kit includes the following gearing now.

Front and rear

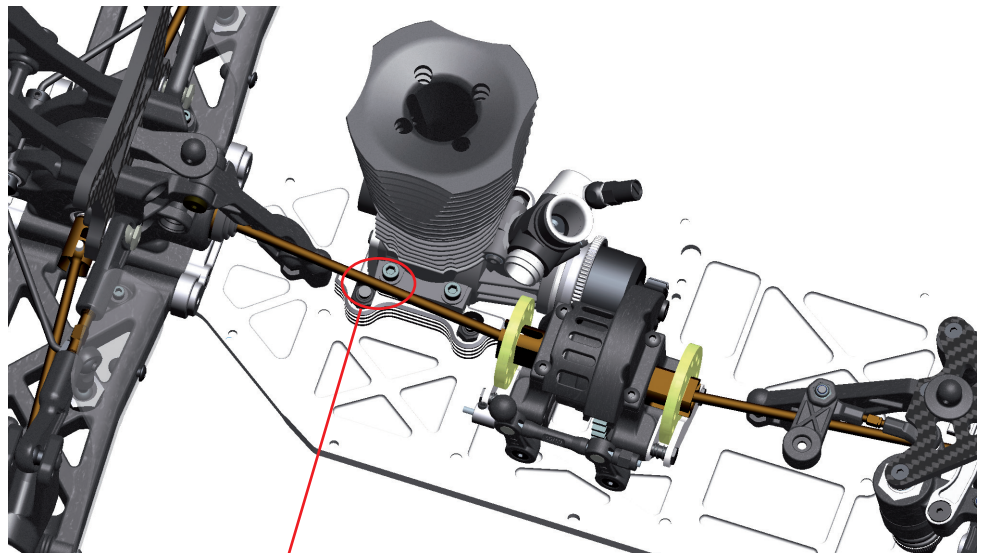
600495 = 13T pinion

600480 = 44T diffgear

Centre / clutch

600216 = 13T clutch bell

600280 = 48T spur



Due to the new gearing, the central rear shaft will be closer to the engine / engine mount and due to the length of the rear central shaft and the flex in the rear of the chassis, it may touch more or less under use.

Depending on the brand of engine, you may need to make below modification to the case of the engine.

Remove some material here if necessary

