



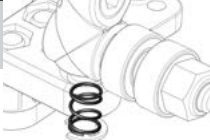
SET UP

F110

FRONT SPRINGS (lbs)

18 ☐22 ☐26 ☐

Other (brand/type): /



FRONT RIDE HEIGHT SPACERS

SPACERS

mm



CENTRAL SHOCK

Shocktower position



CENTER SPRING

Gray ☐White ☐Black ☐Yellow ☐Green ☐Orange ☐

Other (brand/type): /

SHOCK OIL

cst

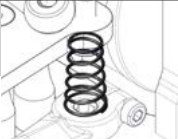
PISTON HOLES



SIDE SPRINGS (lbs)

4.5 ☐6.0 ☐5.0 ☐6.5 ☐5.5 ☐7.0 ☐

Other (brand/type): /



CENTRAL TUBE



OIL

cst

REAR AXLE INSERT

0/0 ☐0/25 ☐0/5 ☐0/30 ☐0/10 ☐0/35 ☐0/15 ☐0/40 ☐0/20 ☐

REMARKS

RACE
TRACK
DRIVER
SURFACE: ASPHALT ☐ CARPET ☐
TRACTION: LOW ☐ MEDIUM ☐ HIGH ☐
TRACK TEMP AIR TEMP

DATE
QUALIFYING POSITION
QUALIFYING TIME
STARTING POSITION
FINAL POSITION

FRONT

TRACK WIDTH: STANDARD ☐ WIDE ☐

ROLL CENTER AND WISHBONE ANGLE

Shims Rear mm

Shims Front mm

OFFSET

Shims mm

STEERING ROD POSITION

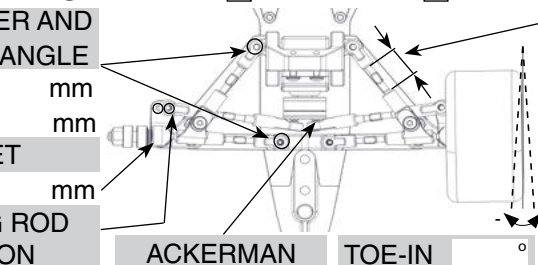
Shims mm

ACKERMAN

Shims mm

TOE-IN

°



CASTER (link length)

Standard

15.7 mm

0° ☐

Wide

14 mm

15 mm

3° ☐

13.4 mm

14.4 mm

6° ☐

12.8 mm

13.9 mm

9° ☐

12.2 mm

CAMBER

R

°

L

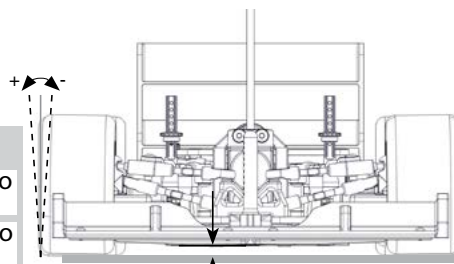
°

RIDE HEIGHT

mm

WITH TYRE Ø

mm



FRONT TIRES

Type: Rubber ☐ Foam ☐

Brand

Hardness

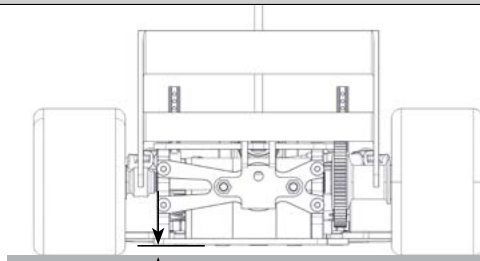
Diameter mm

Additive

Additive time min

Treated surface %

REAR



RIDE HEIGHT

mm

WITH TYRE Ø

mm

REAR TIRES

Type: Rubber ☐ Foam ☐

Brand

Hardness

Diameter mm

Additive

Additive time min

Treated surface %

RATIO CONFIGURATION

SPUR GEAR

Pitch

Teeth

PINION

Pitch

Teeth

Final drive ratio

Rollout

mm

AERODYNAMIC CONFIGURATION

BODY

Brand

Type

FRONT WING

Brand

Type

REAR WING

Brand

Type

ELECTRONICS

BATTERY: STANDARD ☐ SHORTY ☐

Brand

Capacity

MOTOR

Brand

Type

Timing

ESC

Brand

Type

Configuration