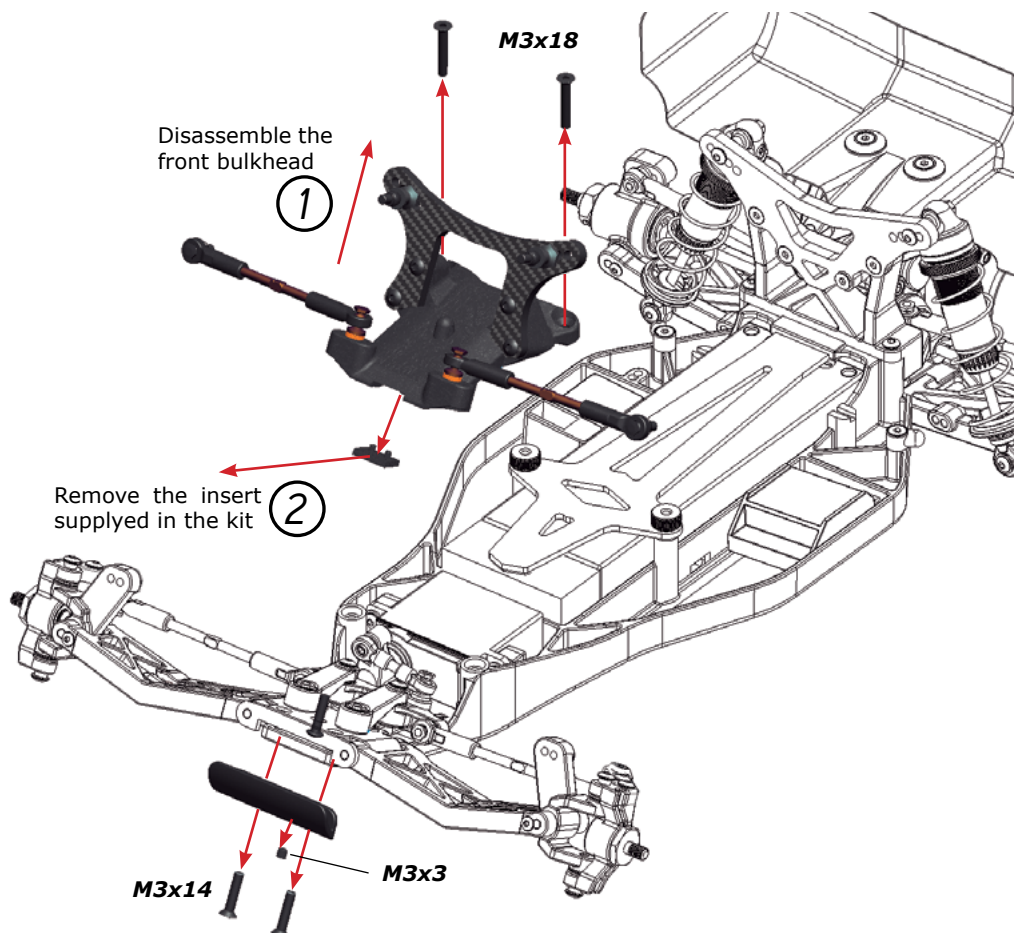


# ANTIROLL BAR SET FRONT SRX2 #500194

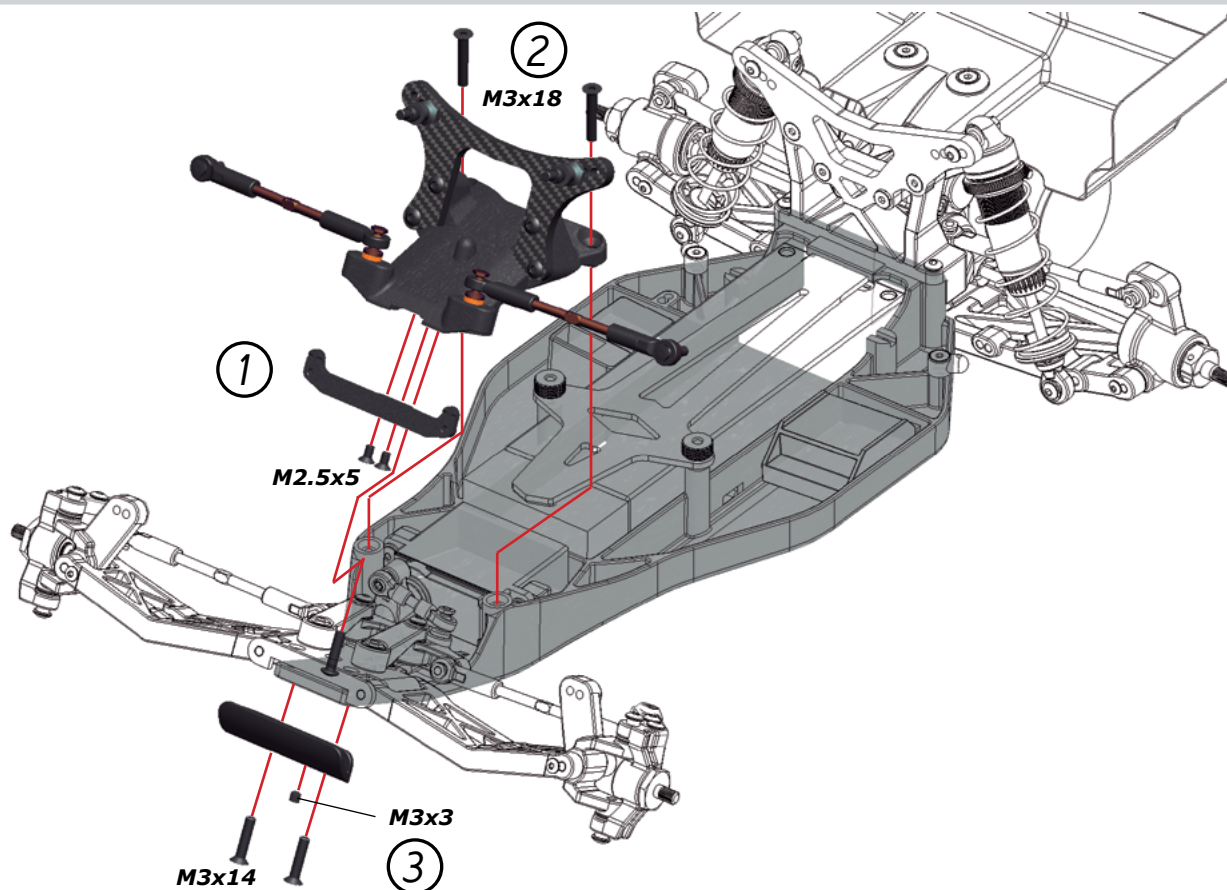
STEP

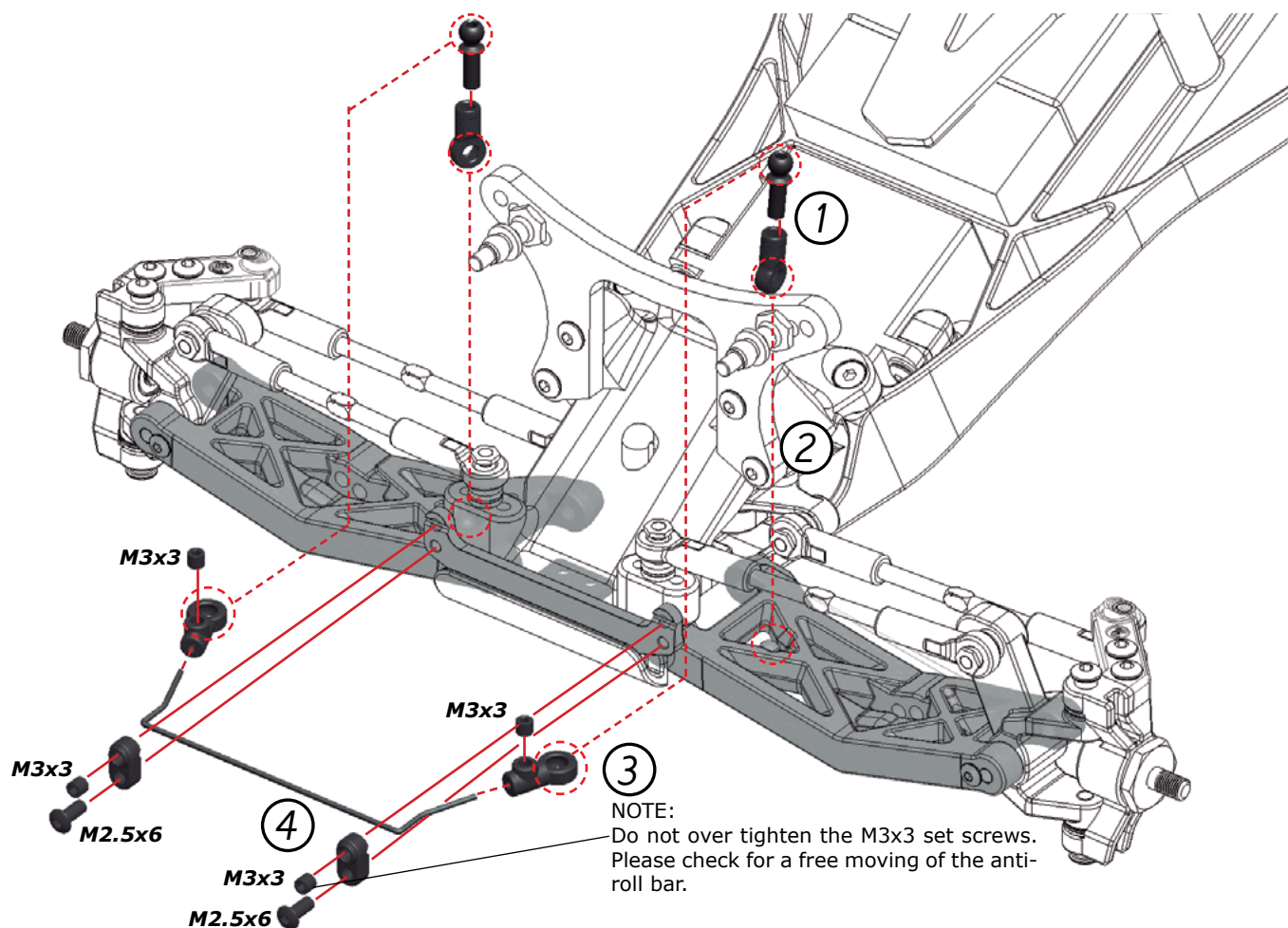
1



STEP

2

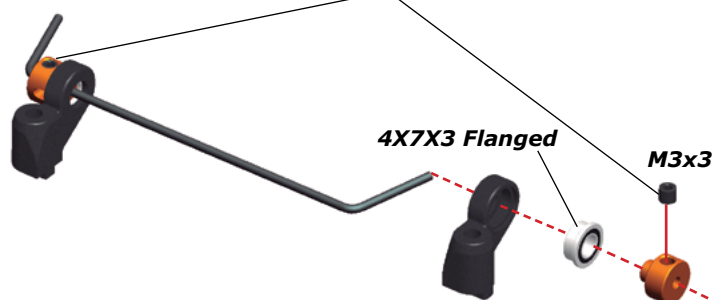




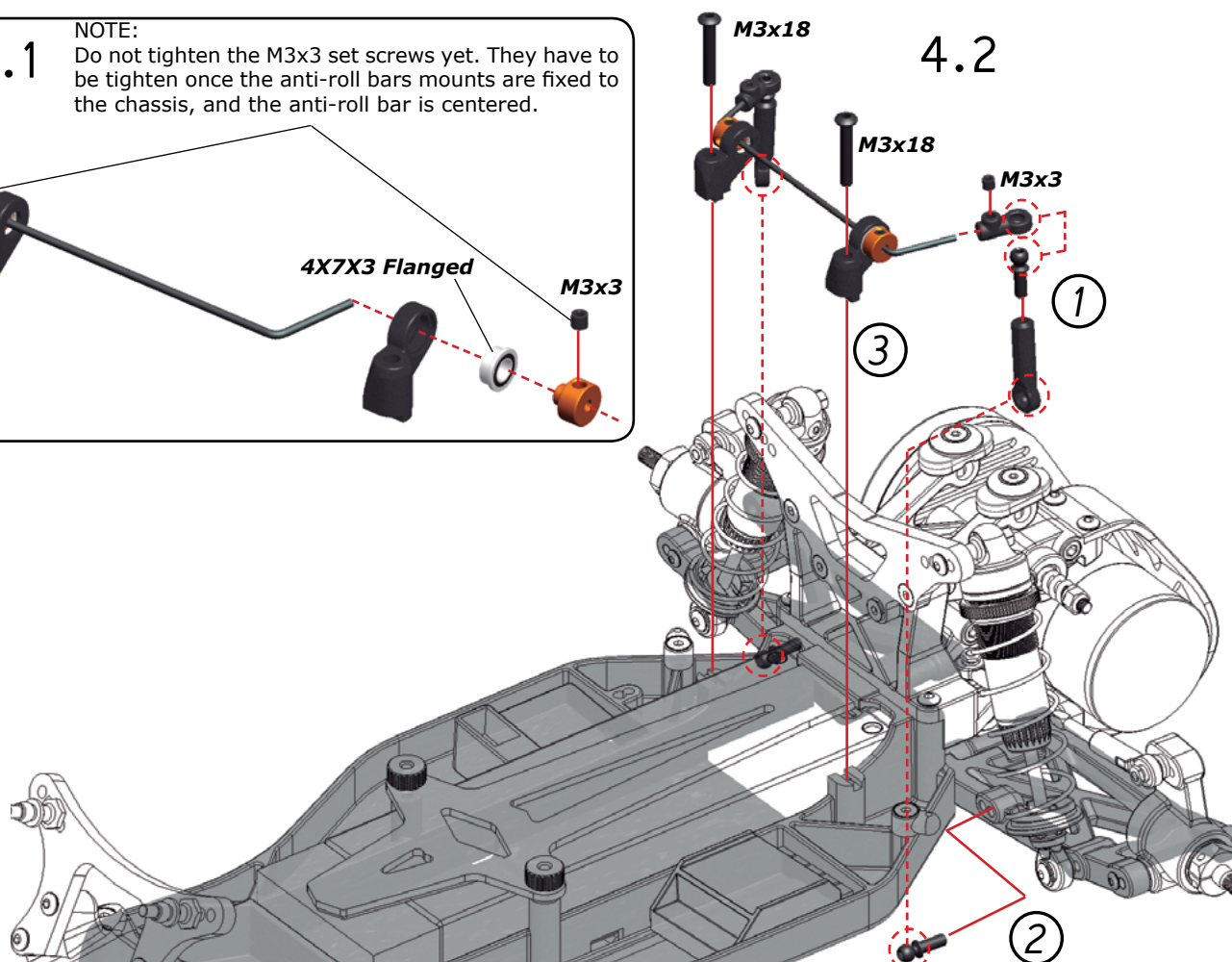
## ANTIROLL BAR SET REAR SRX2 RM #500195

4.1

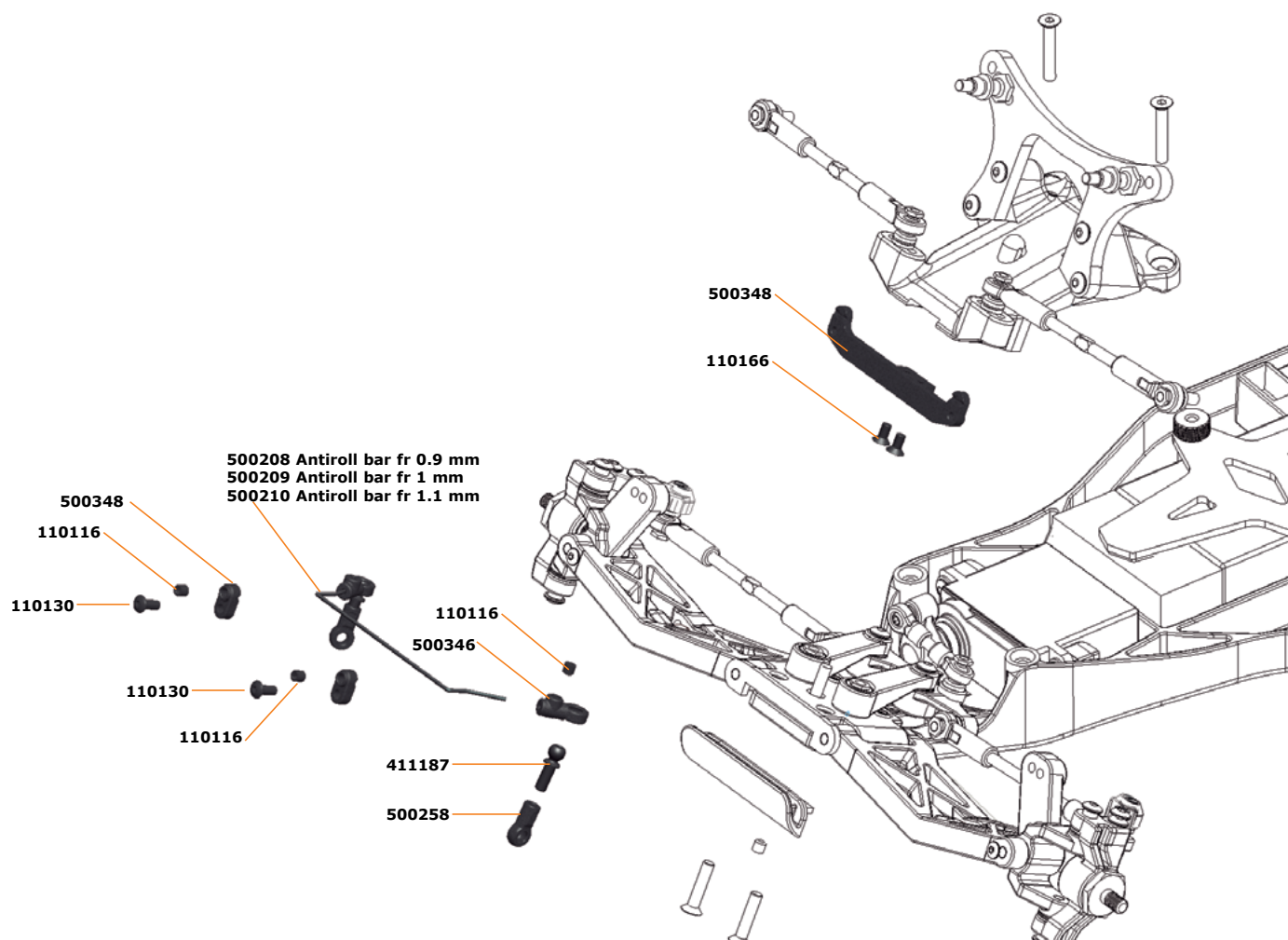
**NOTE:**  
Do not tighten the M3x3 set screws yet. They have to be tighten once the anti-roll bars mounts are fixed to the chassis, and the anti-roll bar is centered.



4.2



# FRONT ANTI-ROLL BAR ASSEMBLY



# REAR ANTI-ROLL BAR ASSEMBLY

