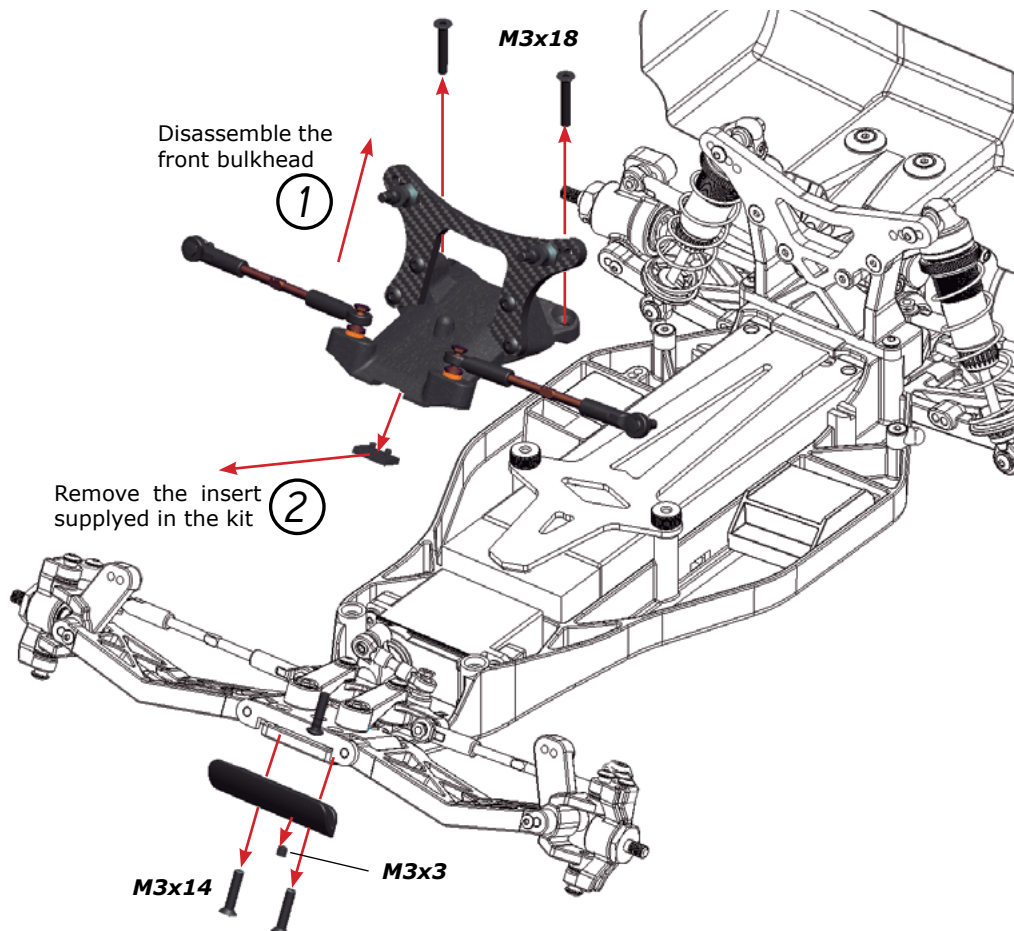


ANTIROLL BAR SET FRONT SRX2 #500194

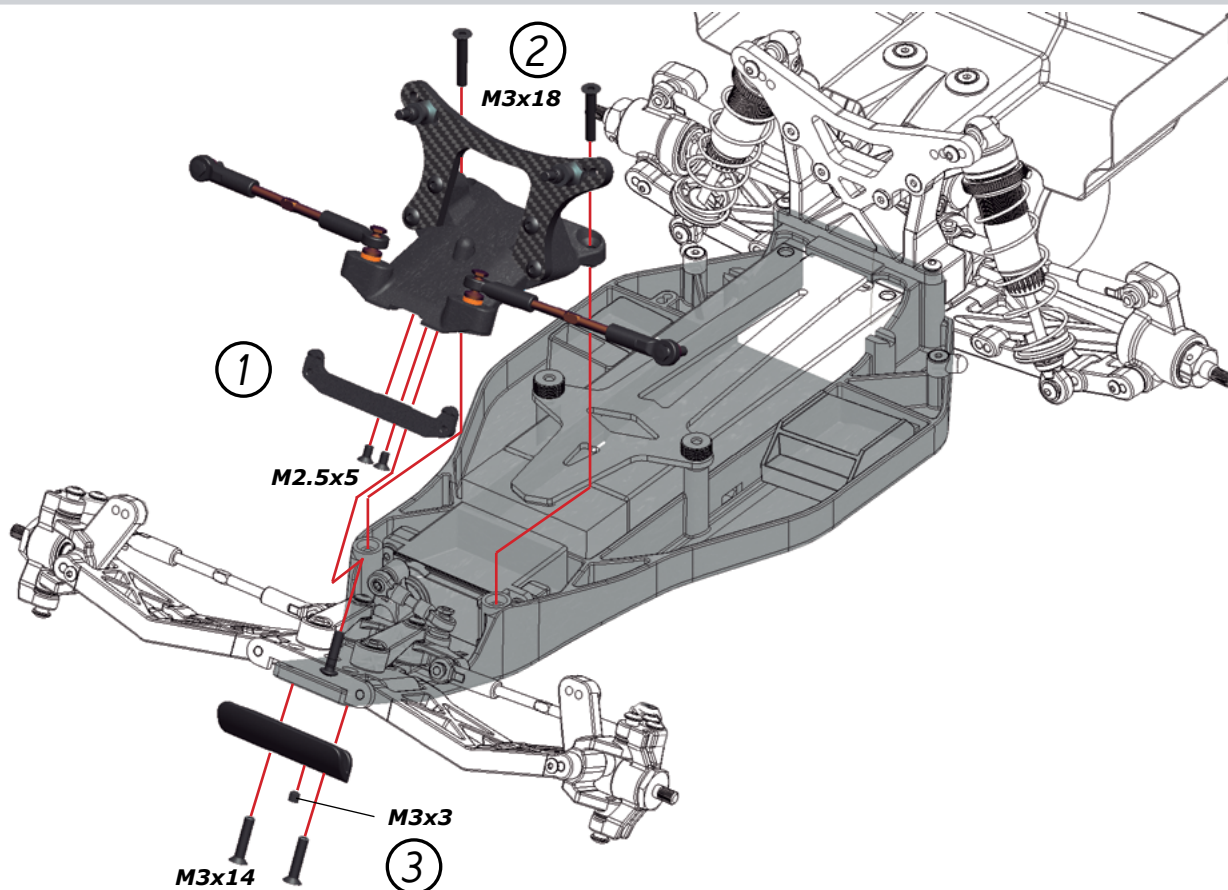
STEP

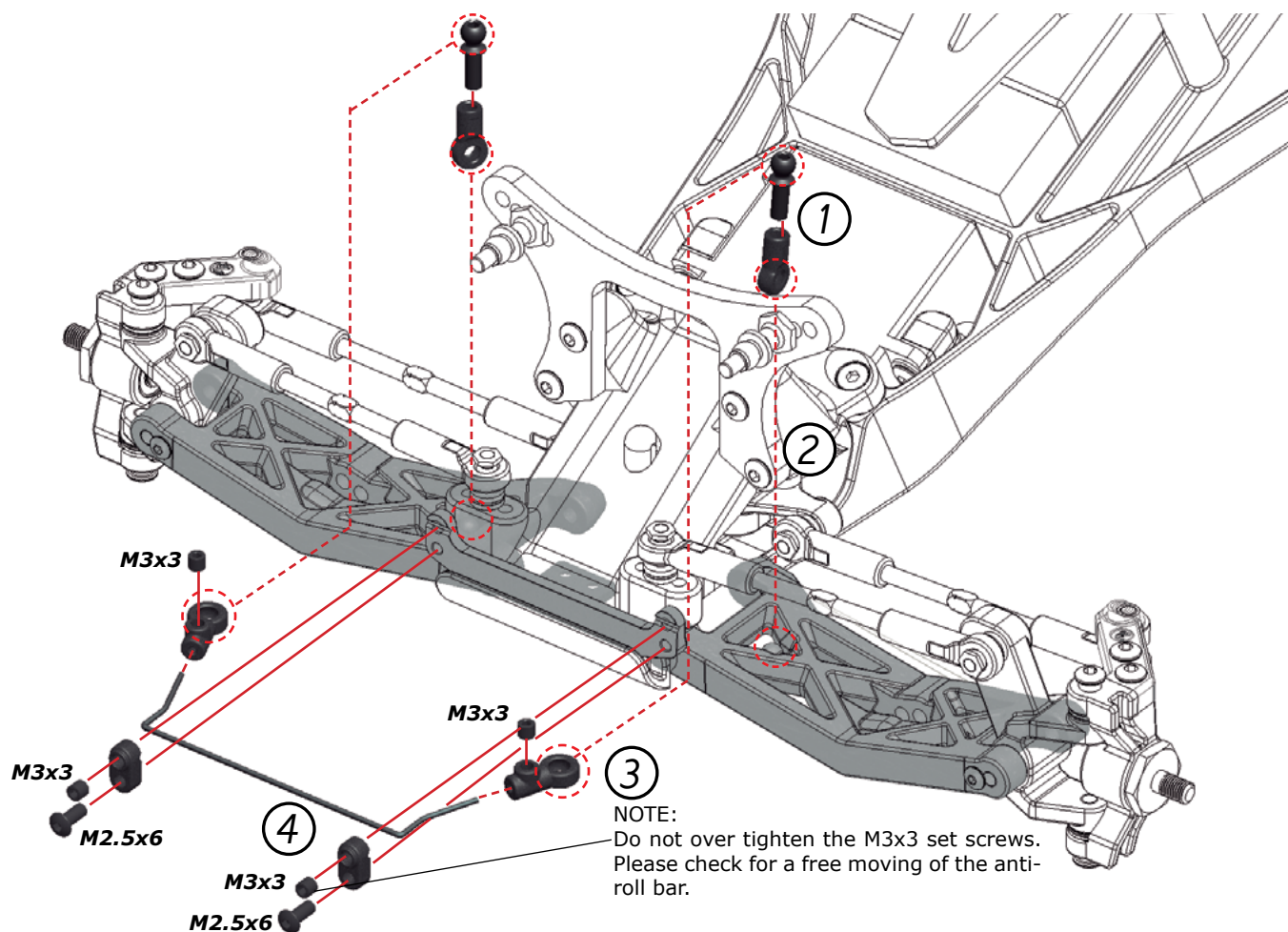
1



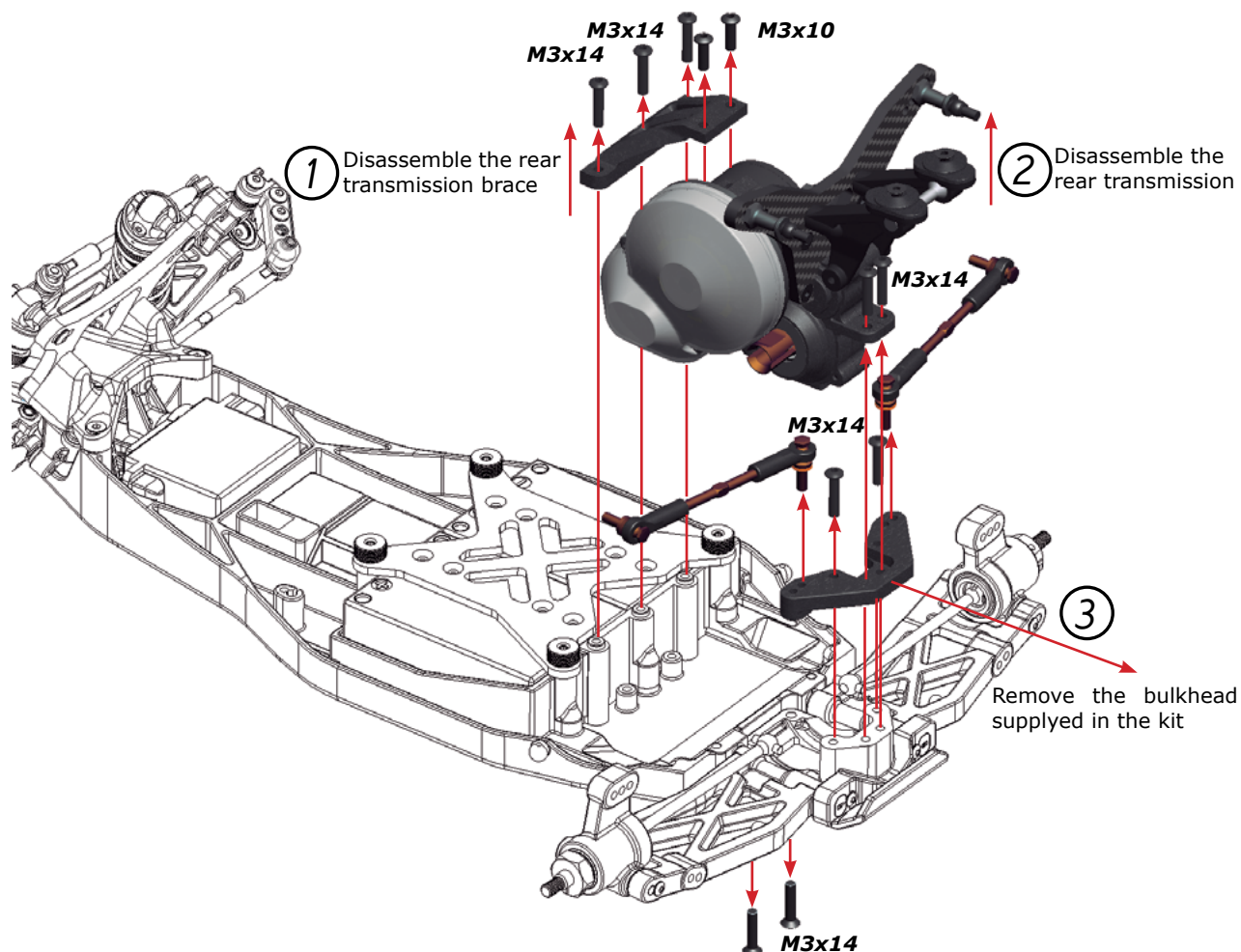
STEP

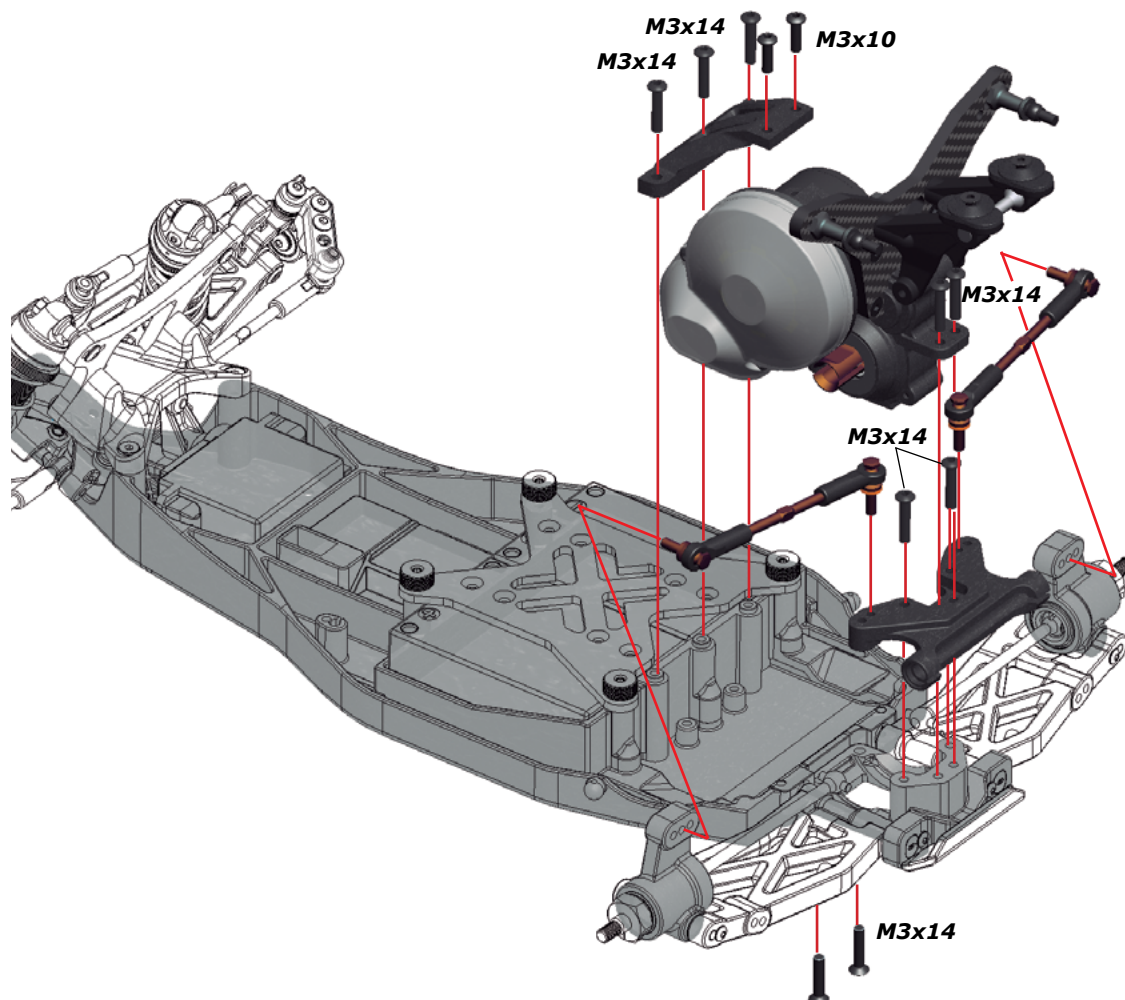
2





ANTIROLL BAR SET REAR SRX2 MM #500281



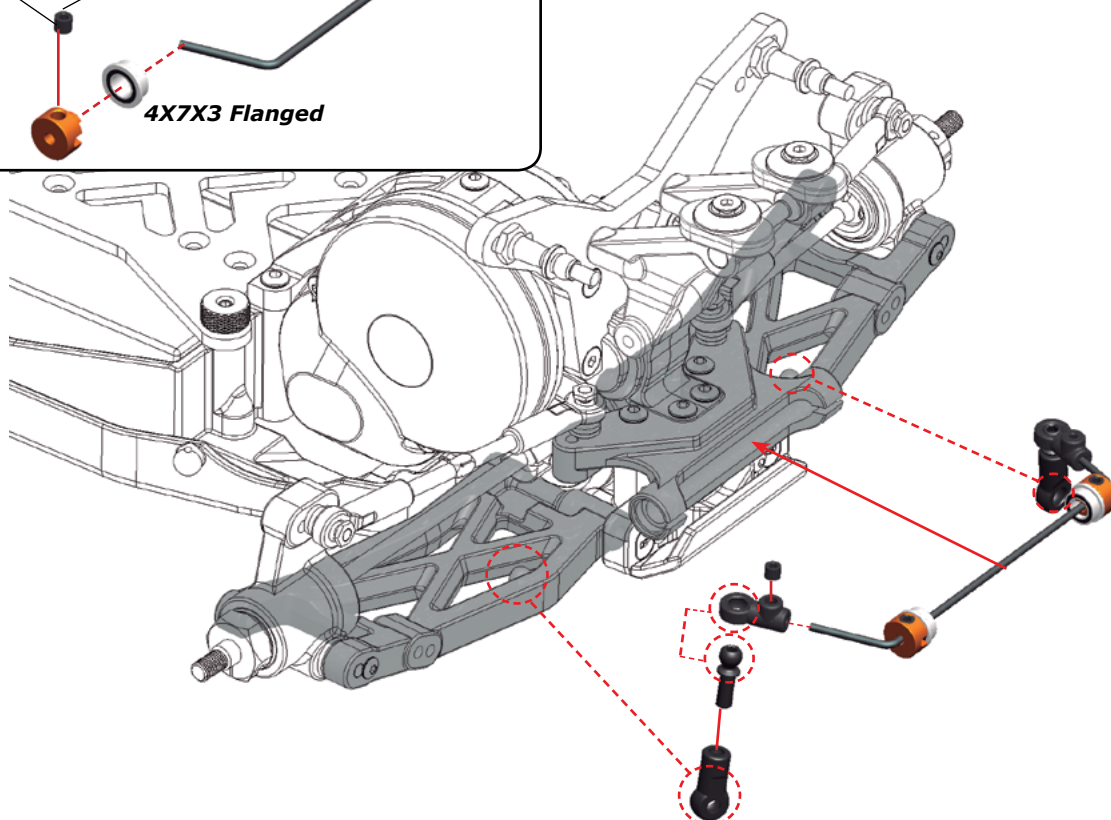


6.1

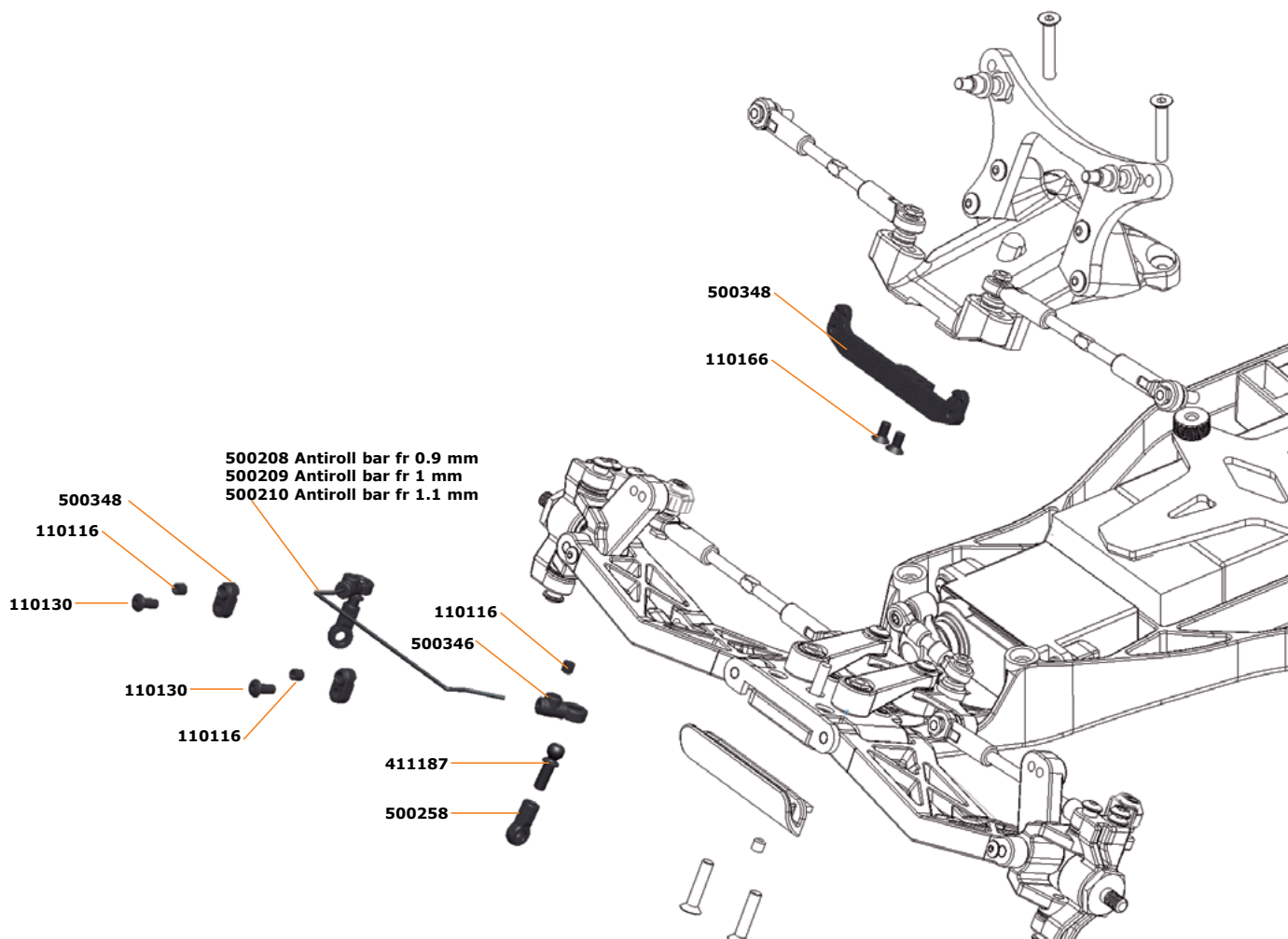
NOTE:
Do not tighten the M3x3 set screws yet. They have to be tighten once the anti-roll bar is assembled and centered.



6.2



FRONT ANTI-ROLL BAR ASSEMBLY



REAR ANTI-ROLL BAR ASSEMBLY

