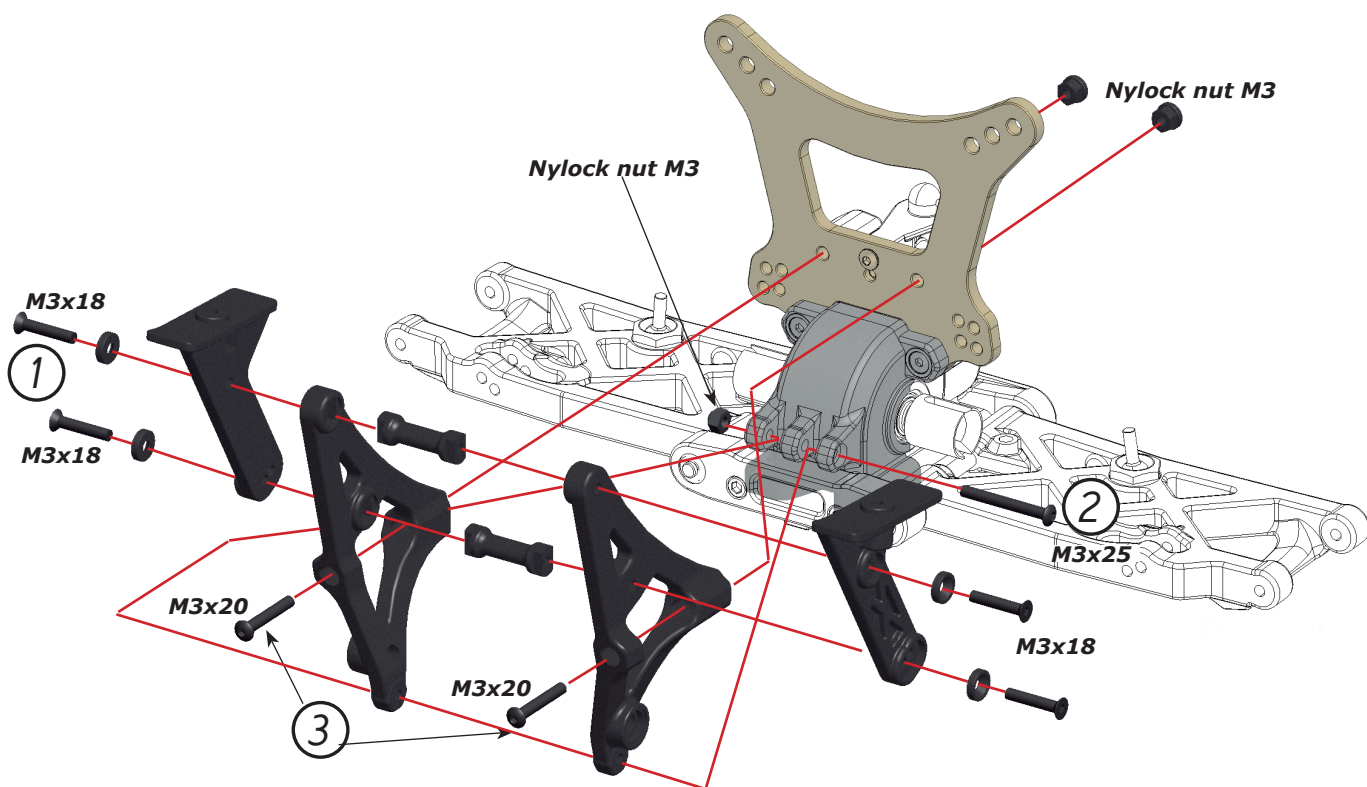
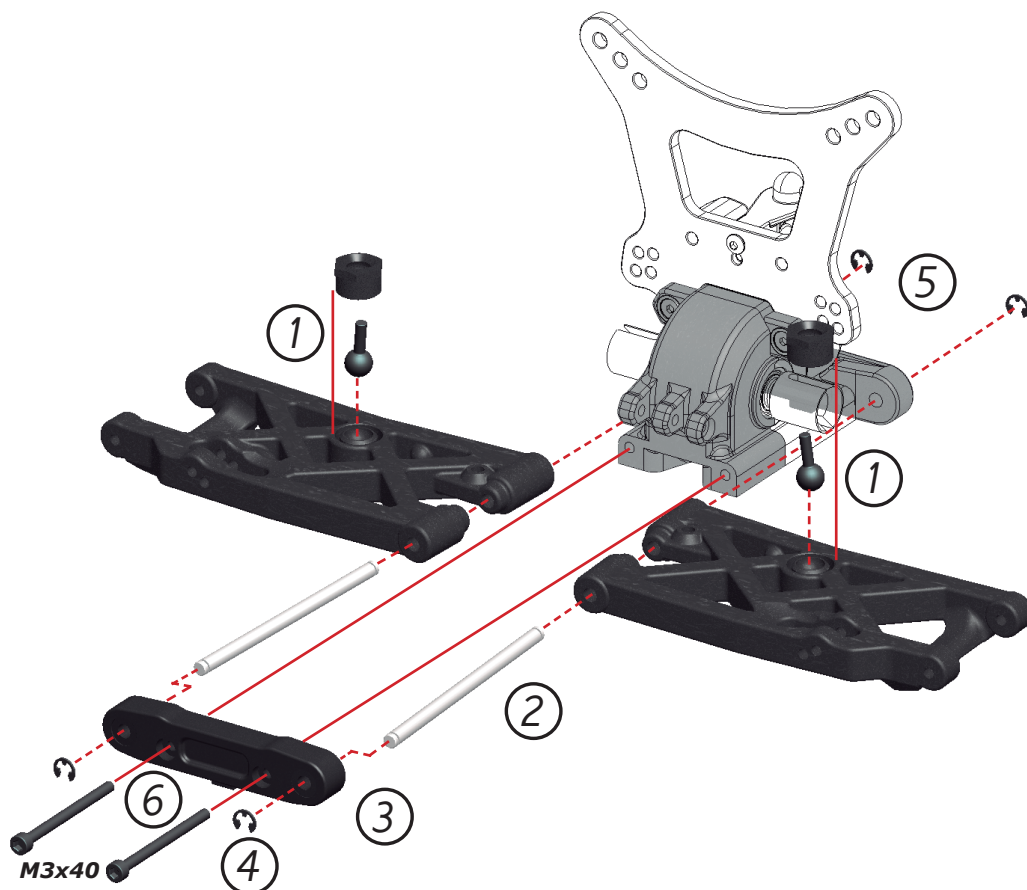
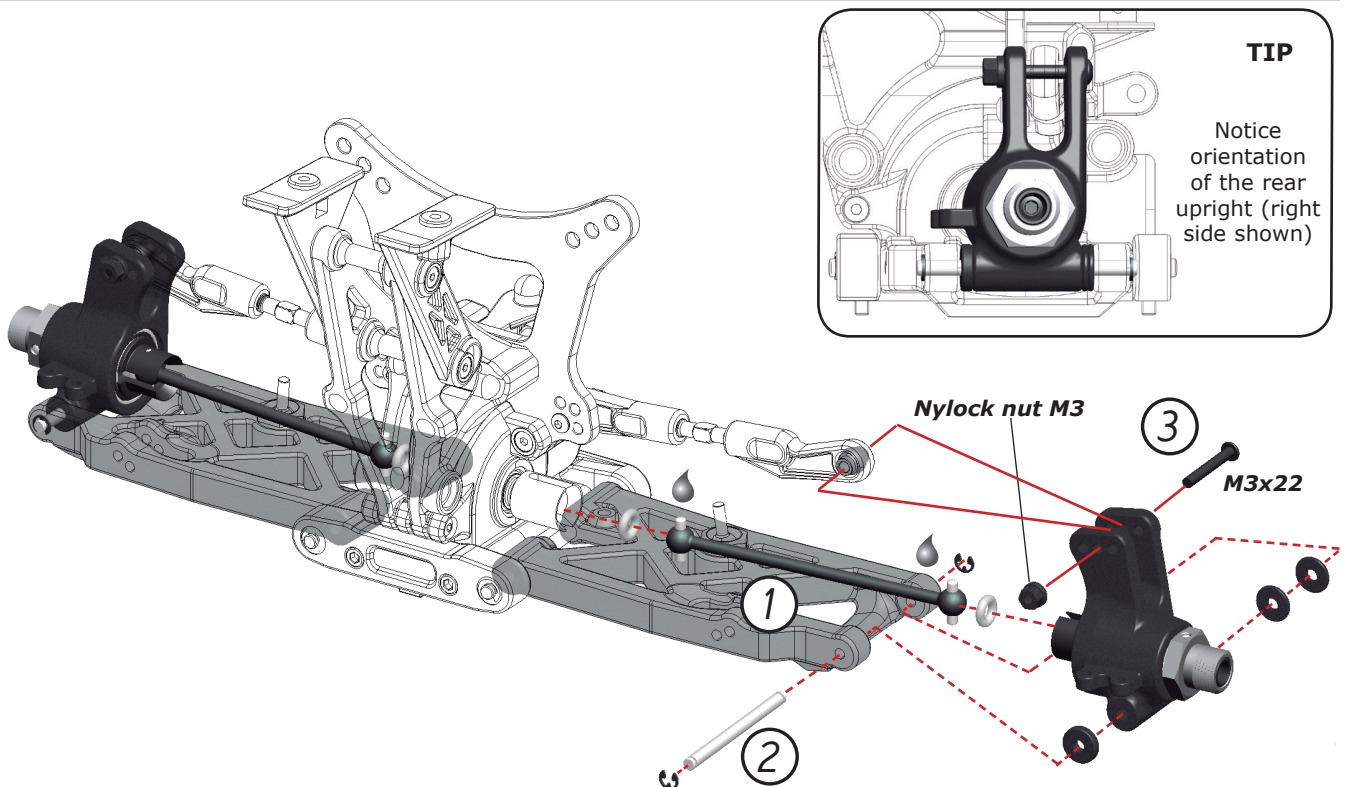
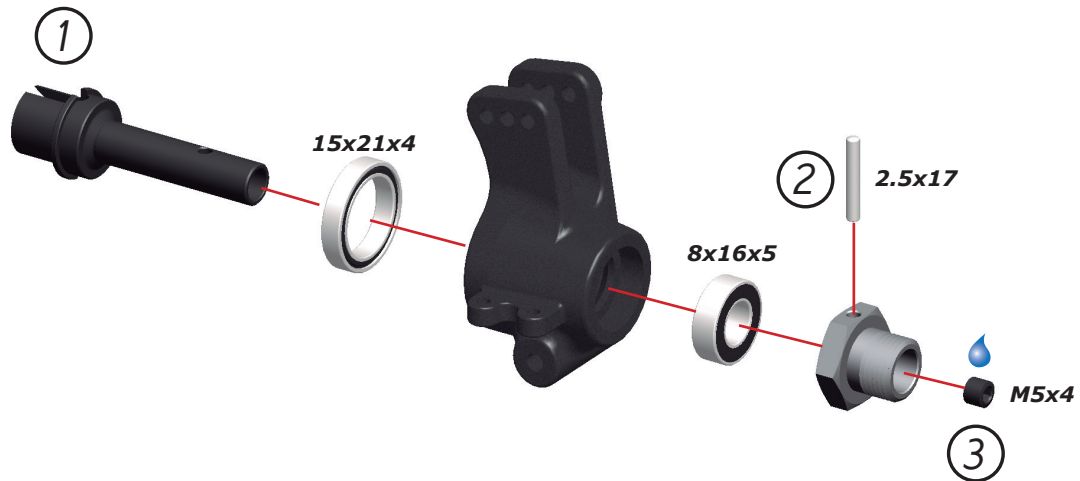
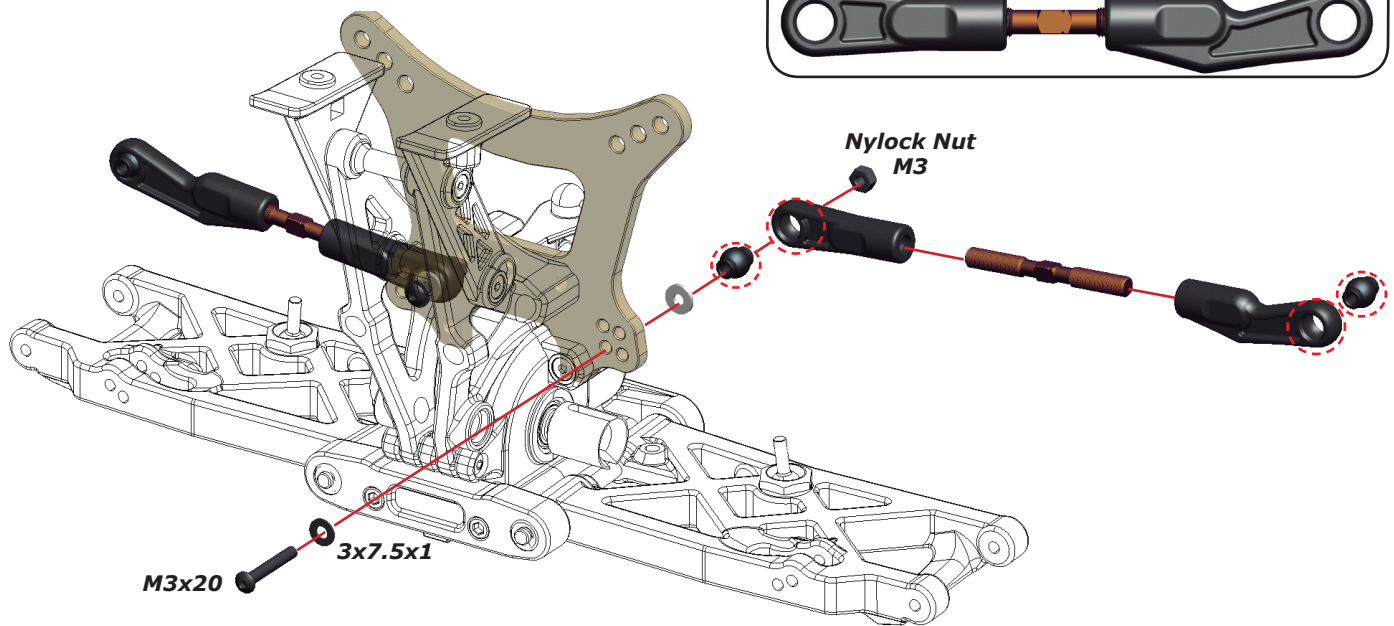


## Update manual for Cobra Be Sport.

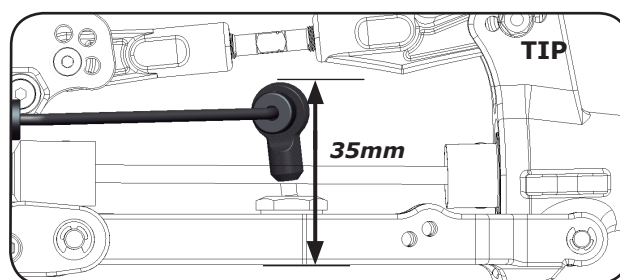
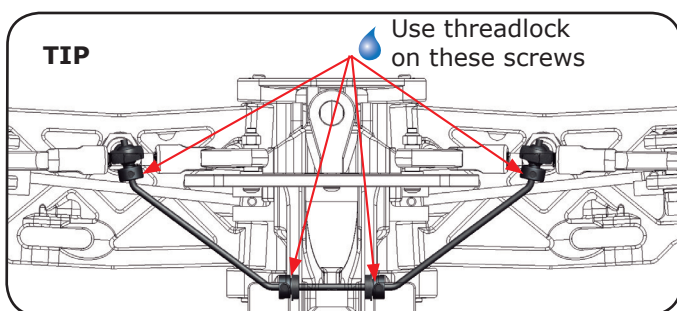
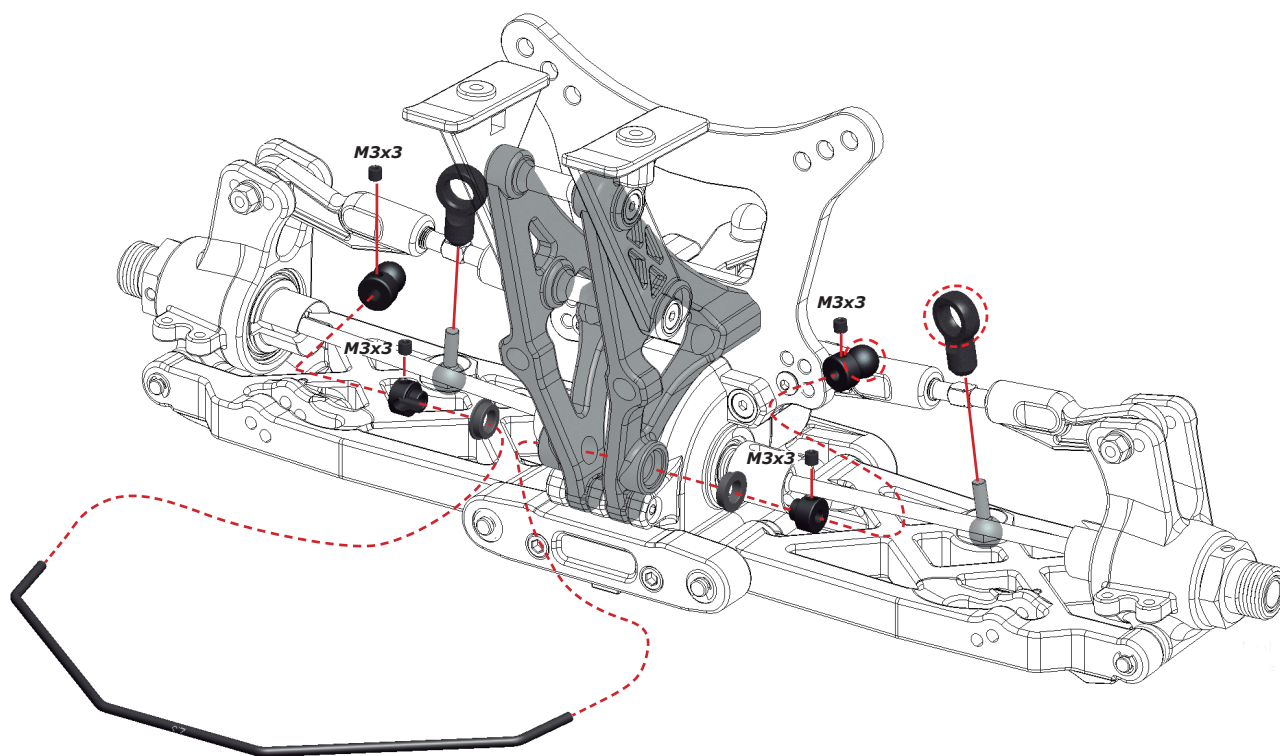
The steps in this update replace the ones in the original manual, about the shocks and the rear end assembly.











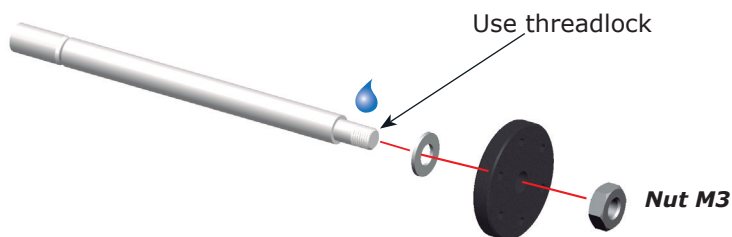


# FRONT/REAR SHOCK ASSEMBLY

D

1

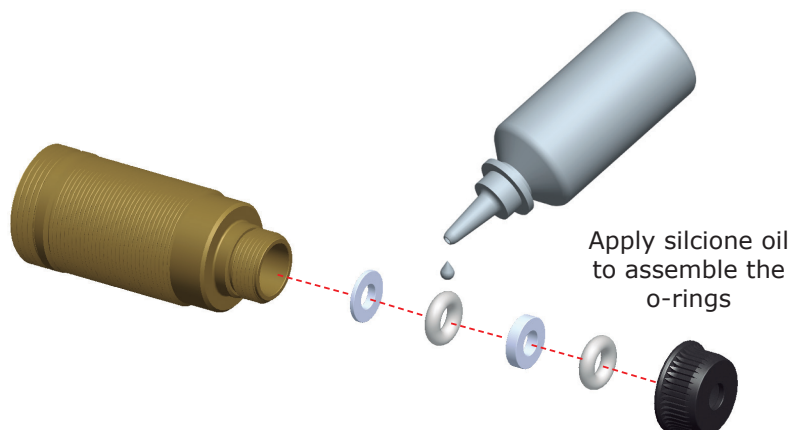
BAG  
8/9



BAG 8 = FRONT  
BAG 9 = REAR

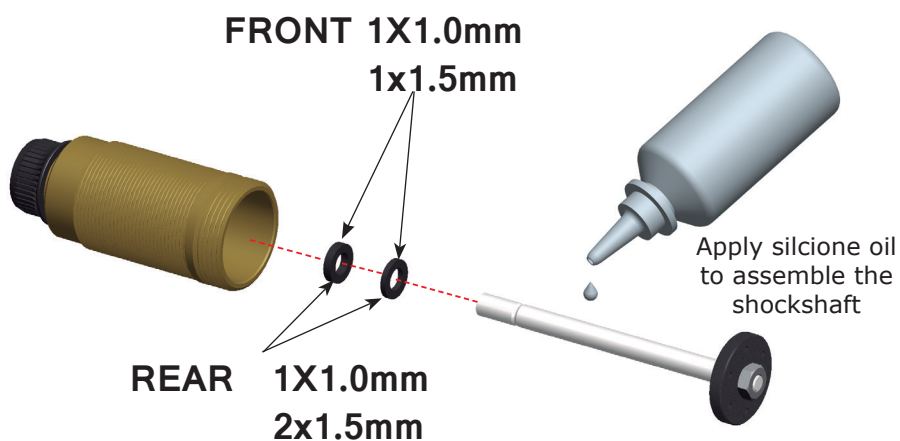
D

2



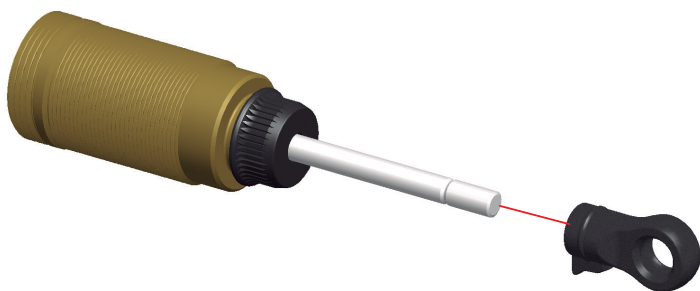
D

3



D

4





D

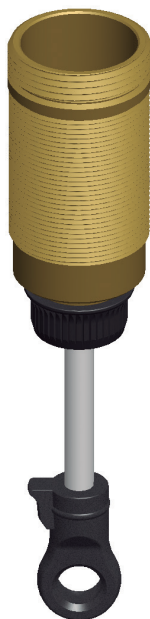
5



Push membrane  
into the shock top

D

6A



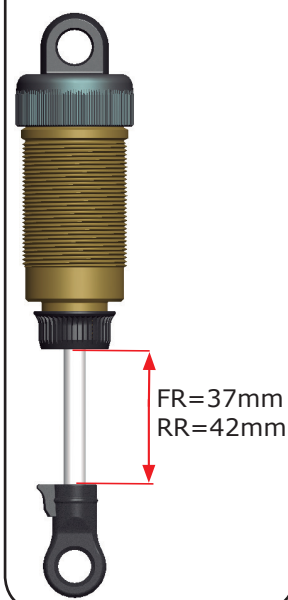
- Fill up with silicone oil
- Wait for air bubbles to escape
- Close top only 3/4
- Check default SET-UP sheet for CST value of silicone oil

D

6A



SHOCK LENGTH



D

7



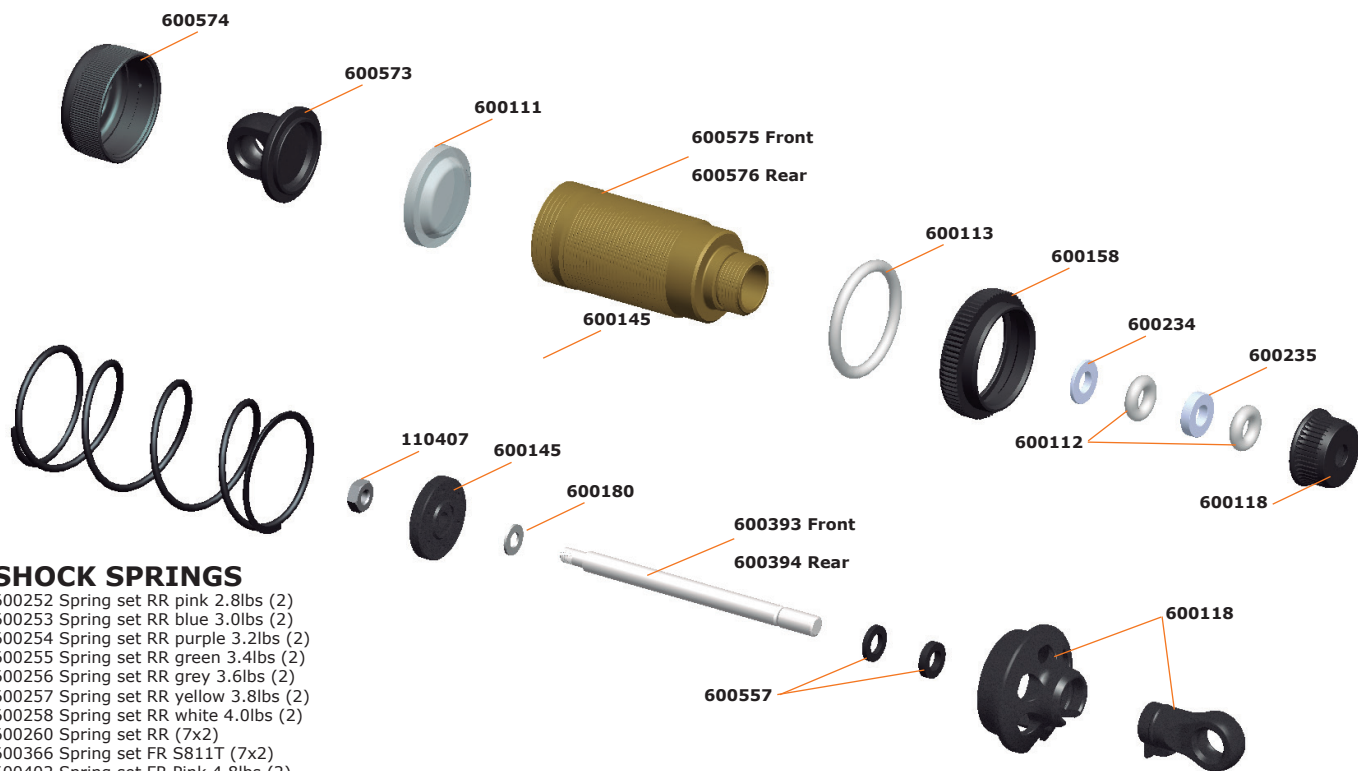


# REAR ASSEMBLY





# SHOCKS ASSEMBLY



## SHOCK SPRINGS

600252 Spring set RR pink 2.8lbs (2)  
 600253 Spring set RR blue 3.0lbs (2)  
 600254 Spring set RR purple 3.2lbs (2)  
 600255 Spring set RR green 3.4lbs (2)  
 600256 Spring set RR grey 3.6lbs (2)  
 600257 Spring set RR yellow 3.8lbs (2)  
 600258 Spring set RR white 4.0lbs (2)  
 600260 Spring set RR (7x2)  
 600366 Spring set FR S811T (7x2)  
 600402 Spring set FR Pink 4.8lbs (2)  
 600403 Spring set FR Blue 5.0 lbs (2)  
 600404 Spring set FR Purple 5.2 lbs (2)  
 600405 Spring set FR Green 5.4 lbs (2)  
 600406 Spring set FR Gray 5.6 lbs (2)  
 600407 Spring set FR Yellow 5.8 lbs (2)  
 600408 Spring set FR White 6.0 lbs (2)