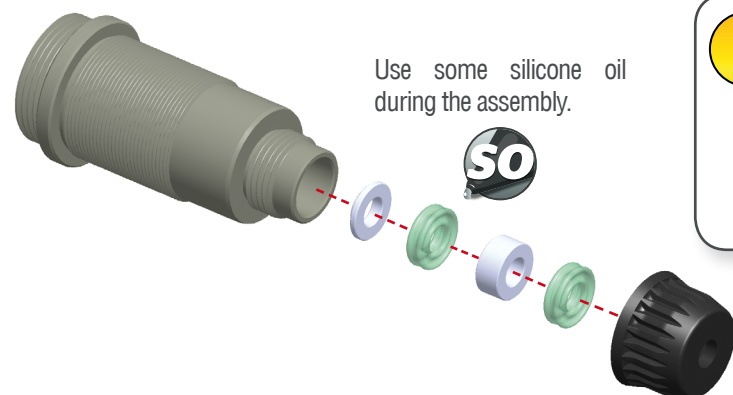
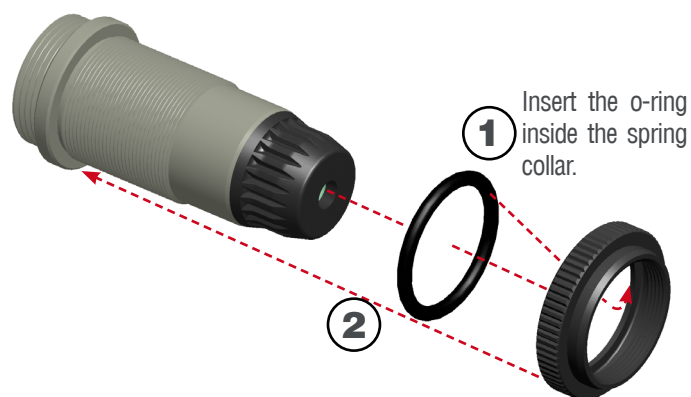


STEP 1

1.1

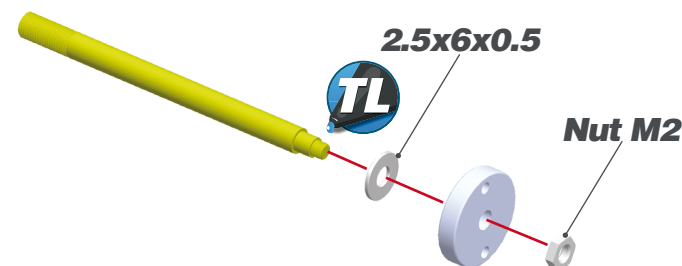


1.2

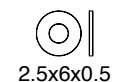
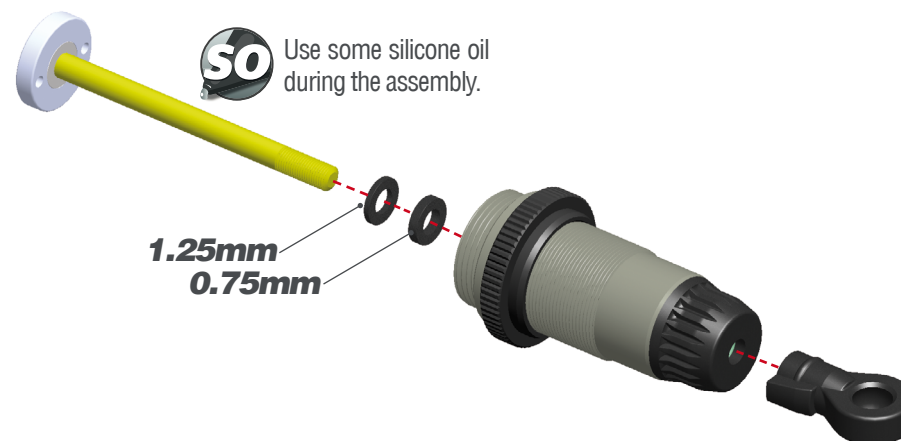


STEP 2

2.1



2.2



STEP 3

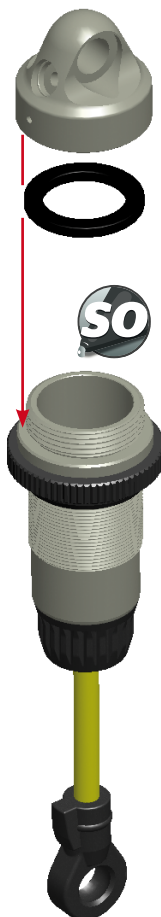
3.1

1- Fill up with silicone oil fully using the silicone oil supplied in the kit. For the correct cst value please check the default setupsheet.

2- Extend the shockrod fully

3- Move the shockrod slowly up and down to let ALL air bubbles escape.

4- Apply the gasket and cap and close fully.



3.2

1-Bleed: push the shockrod all the way in slowly, to allow excessive oil to escape.

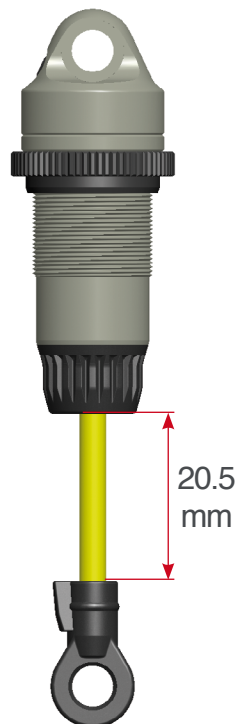
2- With shockrod fully in, mount the o-ring and screw.

M2.3x4



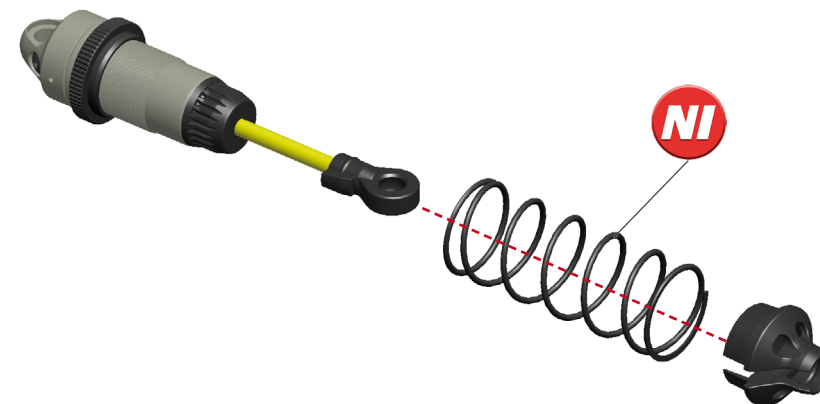
SHOCKS LENGTH

Measure the shock length fully extended.



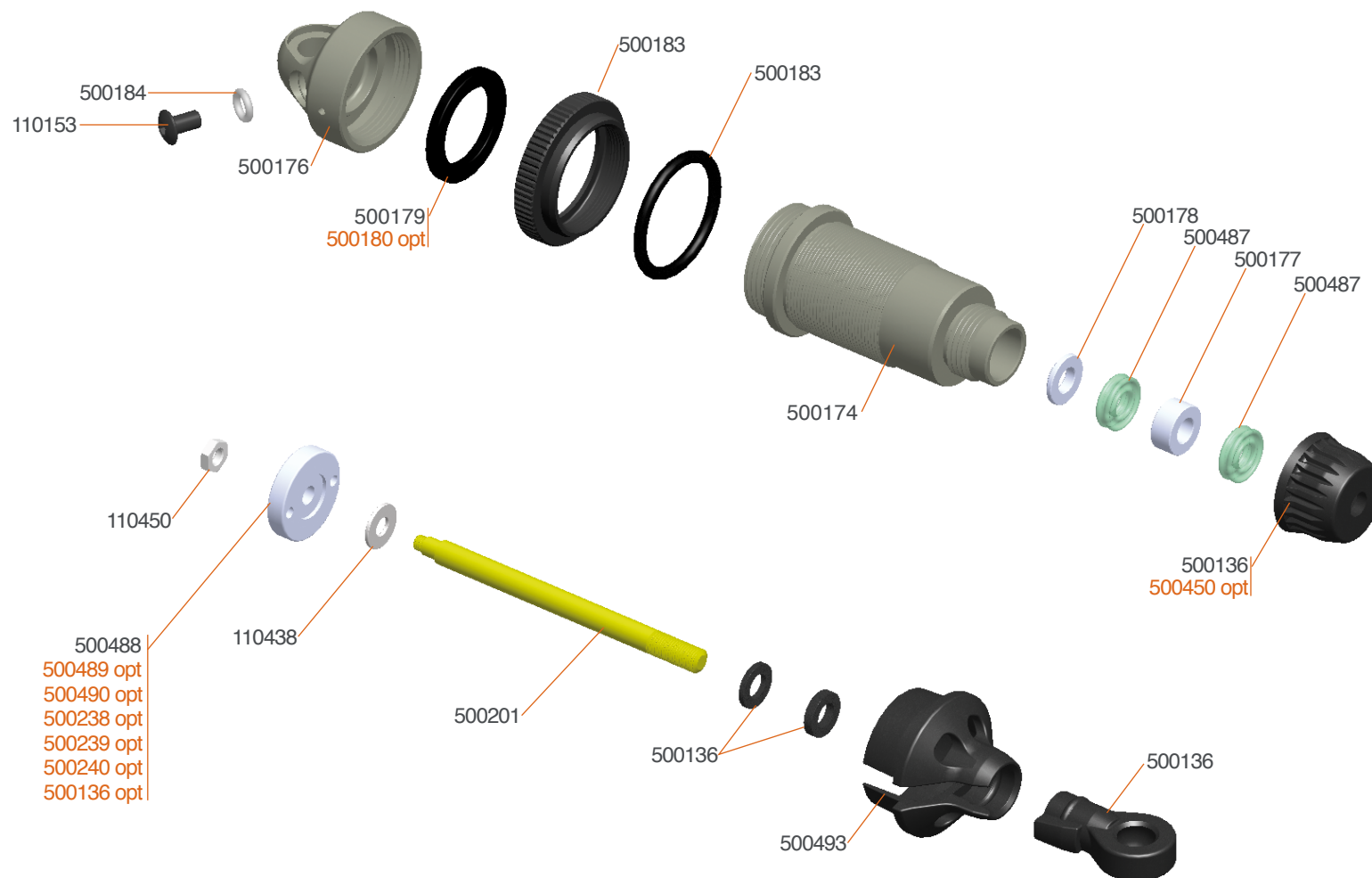
STEP 4

Assemble the spring and spring-cup (align correctly) to complete the shock.



M2.3x4

EXPLODED VIEW PRO SHOCK SET FR SRX/SDX #500645



500450 Shock bottom cap alu (4) SRX
 500136 Shock parts frame (44) SRX2
 500238 Shock piston conical 2 holes (4) SRX2
 500239 Shock piston conical 3 holes (4) SRX2

500240 Shock piston conical 4 holes (4) SRX2
 500489 Shock piston square machined 3-hole 1.2 (4)
 500490 Shock piston square machined 4-hole 1.1 (4)
 500180 Shock membrane (4) SRX2