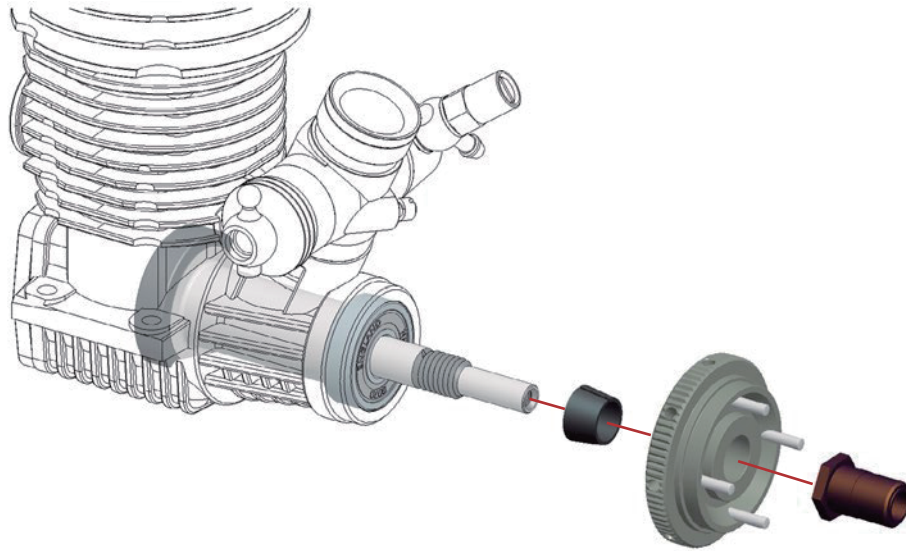


STEP 1



1- To align the clutchgears with the 2-speed gears, it may be needed to use shim(s) 6x8x0.5mm (for 6mm shaft) or 7x8x0.5 (for 7mm shaft) behind the cone. This you can see only after assembling the clutch.

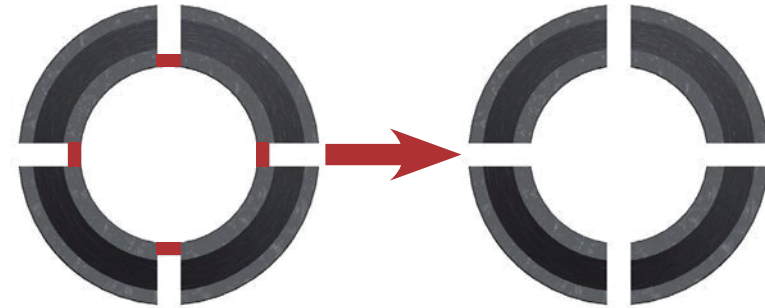
2- The holes in the side of the flywheel can be used to block the flywheel (with short allen tool) through the bottom of the chassis, when the engine/clutch is mounted in the car. It's easier to tighten or loosen the pre-load on the clutch spring that way.

STEP 2

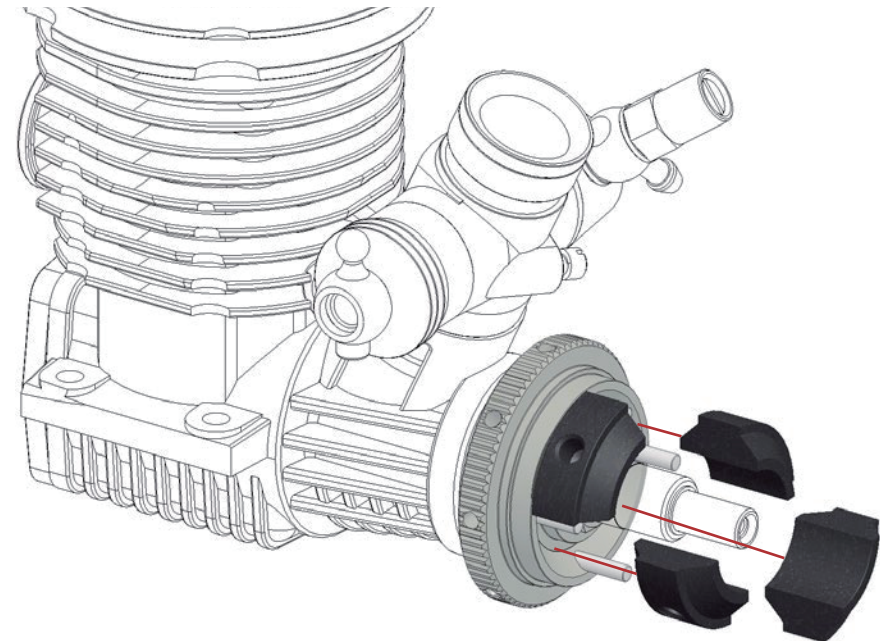
2.1



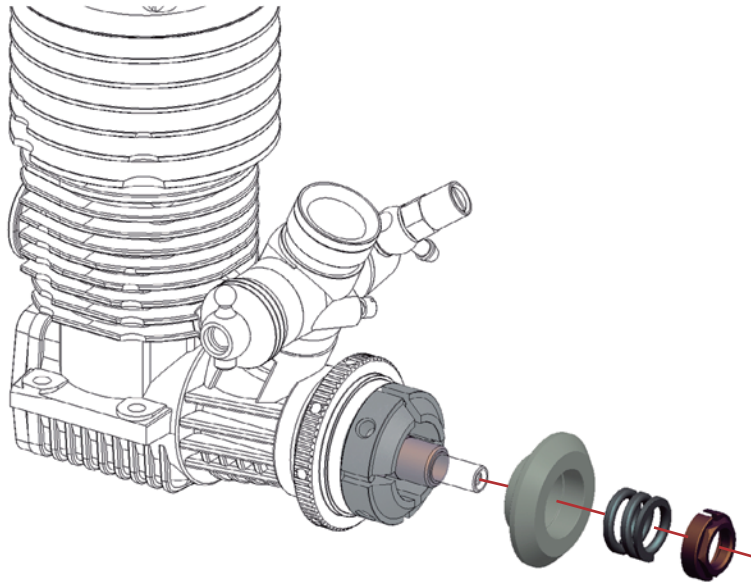
Before to assemble clutch shoes, carefully remove the red area and smoothen the cut surface in order to have four clutch shoes with the same shape.



2.2



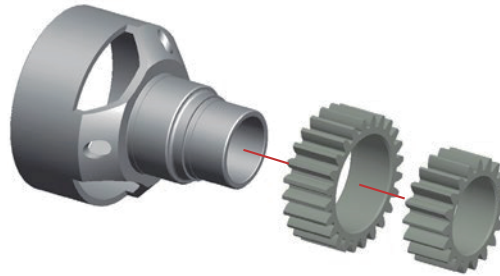
STEP 3



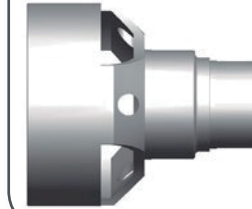
For adjusting the default clutch spring tension:
 1- Screw in the adjusting nut all the way.
 2- Unscrew it one and a half turns.
 3- Fine tune the setup of your clutch on the track according to your driving style, track and weather conditions.

STEP 4

4.1



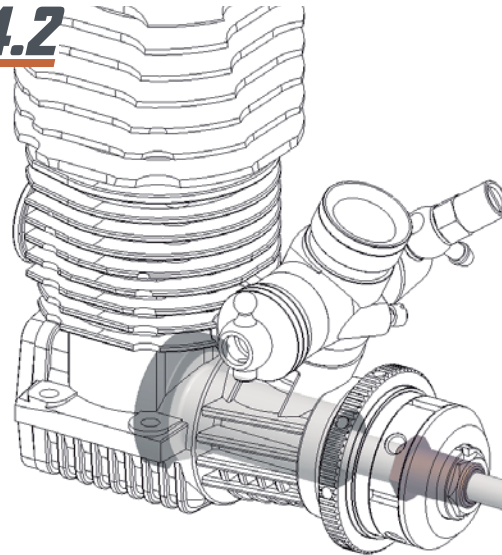
Note the orientation of the gears



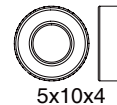
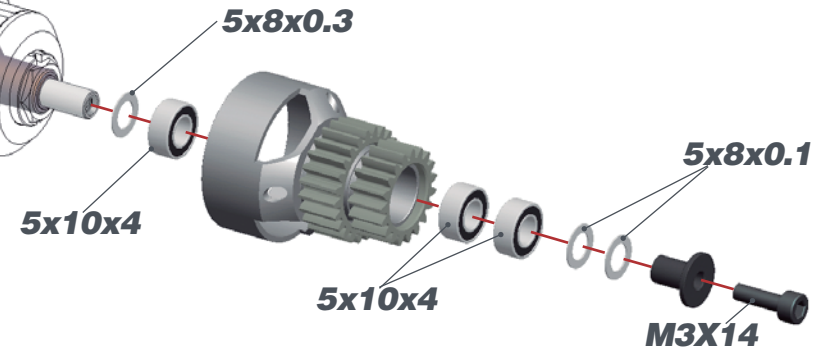
2ND

1ST

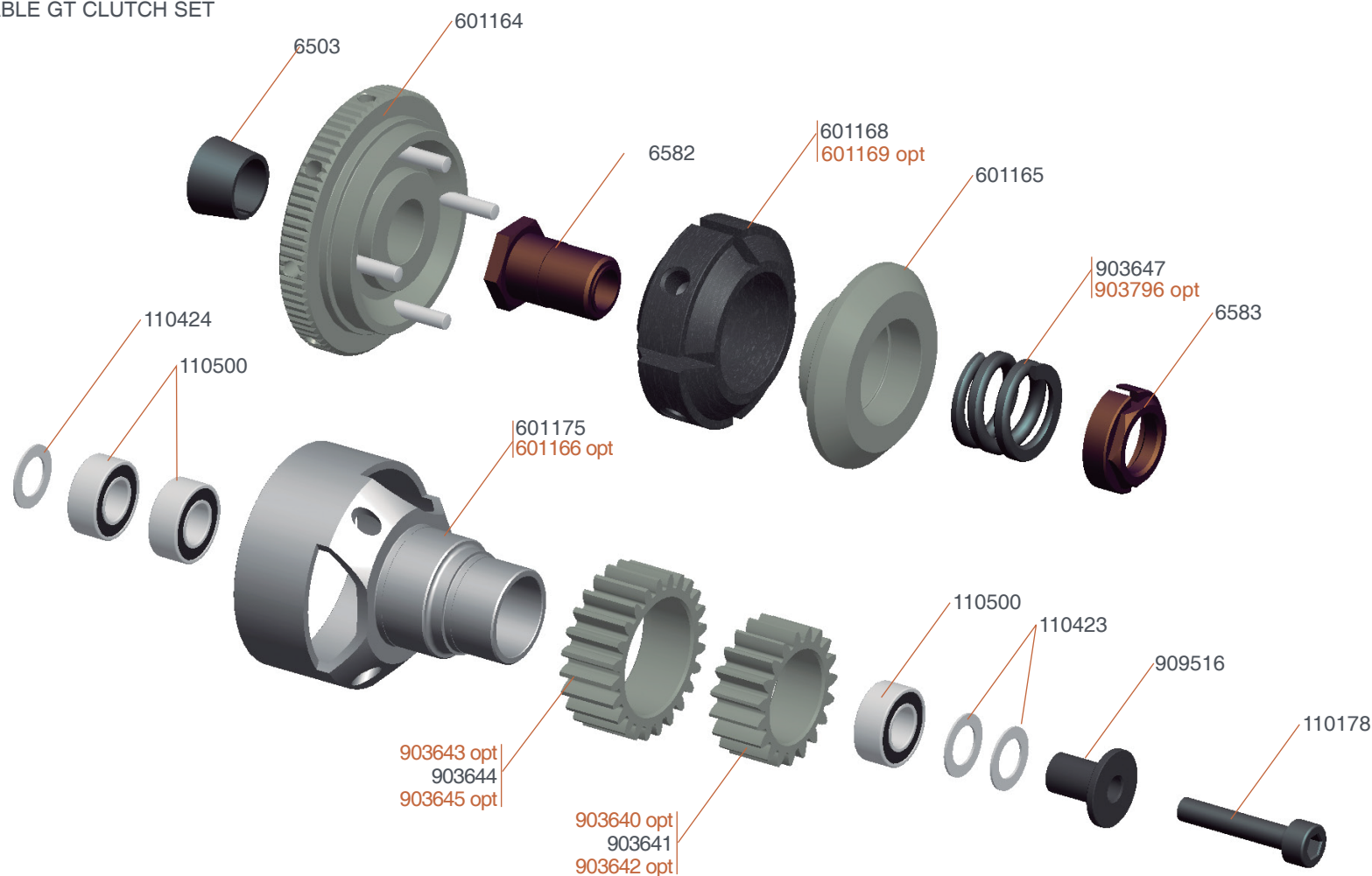
4.2



Place 5x8x0.1 and/or 5x8x0.3 shims to achieve a small amount of end play.



#601163 ADJUSTABLE GT CLUTCH SET



903640 Centax gear-pinion alu 18T XLI
903642 Centax gear-pinion alu 20T XLI
903643 Centax gear-pinion alu 23T XLI

903645 Centax gear-pinion alu 25T XLI
903646 Centax gear-pinion alu set XLI (6)
601169 Adjustable GT clutchshoe yellow

903796 Centax spring XX-hard
601166 Adjustable GT clutchbell alu coated